

APP CRS 343°	Rwy Idg 6549
	TDZE 401
	Apt Elev 439

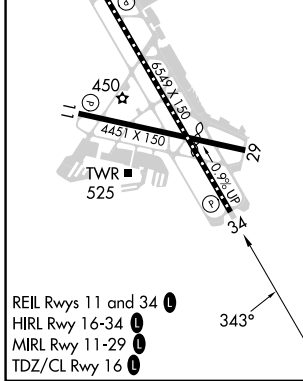
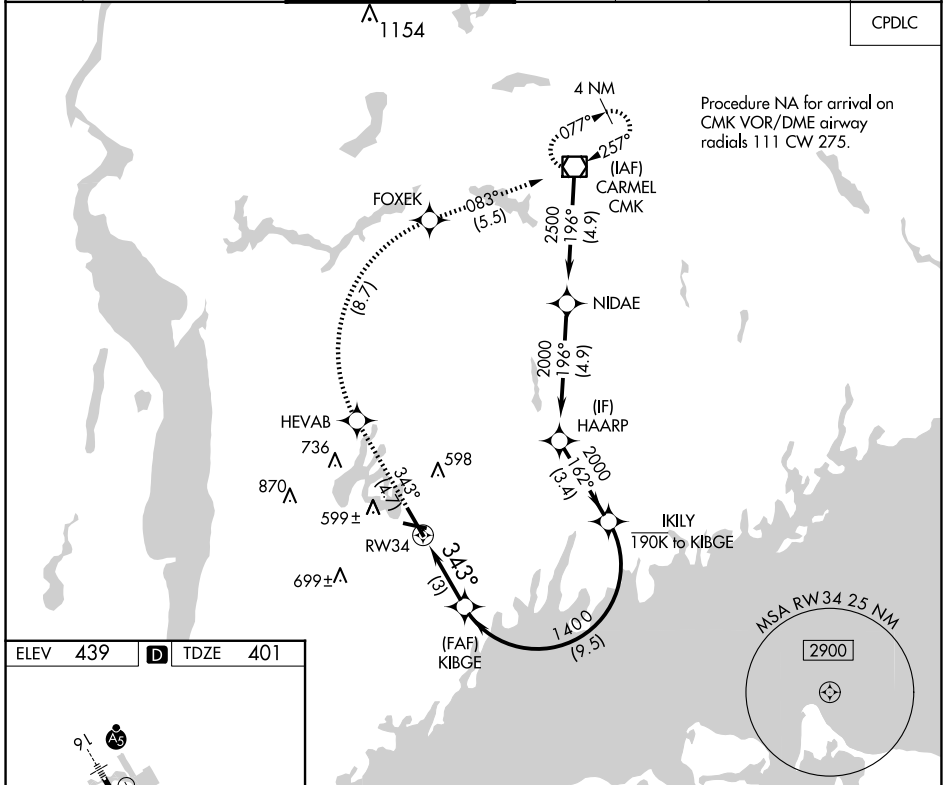
RNAV (RNP) Z RWY 34

WESTCHESTER COUNTY (HPN)

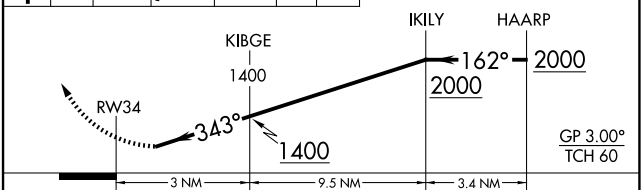
For uncompensated Baro-VNAV systems, procedure NA below -14°C (7°F) or above 54°C (130°F).
RF required. GPS required.

MISSED APPROACH: Climb to 3000 on track 343° to HEVAB, right turn to FOXEK, then on track 083° to CMK VOR/DME and hold.

D-ATIS 133.8	NEW YORK APP CON 120.8 126.4 257.65	WESTCHESTER TOWER ★ 118.575 (CTAF) 0 284.65	GND CON 121.825	CLNC DEL 127.25	CLNC DEL 126.4 (when twr closed)	UNICOM 122.95
------------------------	---	---	---------------------------	---------------------------	---	-------------------------



ELEV 439	TDZE 401	HEVAB	FOXEK	CMK	VGSI and RNAV glidepath not coincident (VGSI Angle 3.00/TCH 56).
3000	tr 343°	HEVAB	FOXEK	tr 083°	



CATEGORY	A	B	C	D
RNP 0.30 DA		788-1 7/8	387 (400-1 3/8)	

AUTHORIZATION REQUIRED

NE-2, 23 JAN 2025 to 20 FEB 2025

NE-2, 23 JAN 2025 to 20 FEB 2025