

WAAS CH 99410 W34A	APP CRS 343°	Rwy Idg TDZE Apt Elev	6549 401 439
--	------------------------	-----------------------------	---

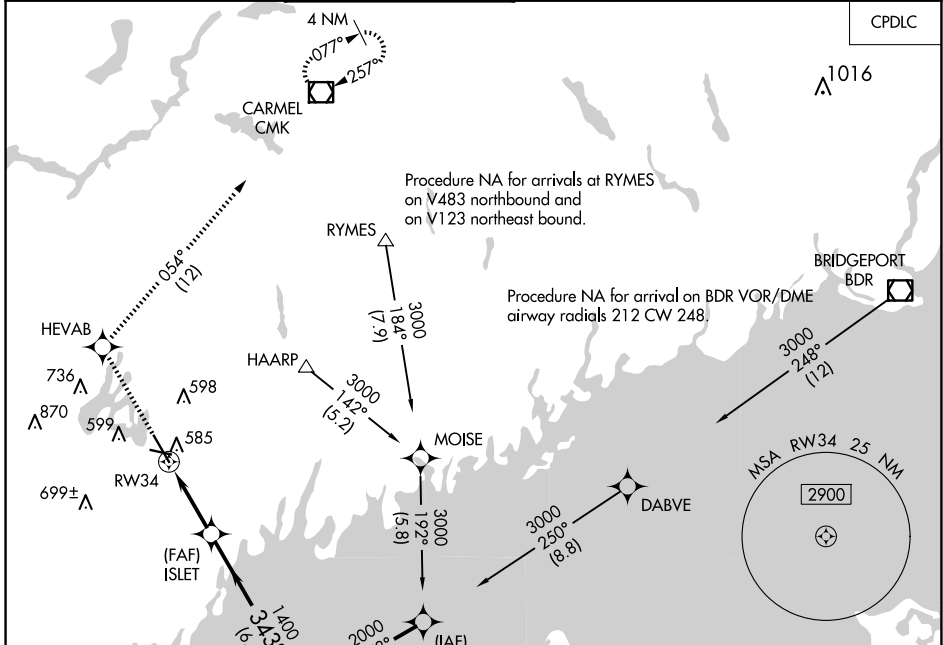
RNAV (GPS) Y RWY 34

WESTCHESTER COUNTY (HPN)

▼ For uncompensated Baro-VNAV systems, LNAV/VNAV NA below -15°C (5°F) or above 54°C (130°F). Circling Rwy 11, 29 NA at night.
▲ Rwy 34 helicopter visibility reduction below ¾ SM NA. DME/DME RNP-0.3 NA.

MISSED APPROACH: Climb to 2300 direct HEVAB and on track 054° to CMK VOR/DME and hold.

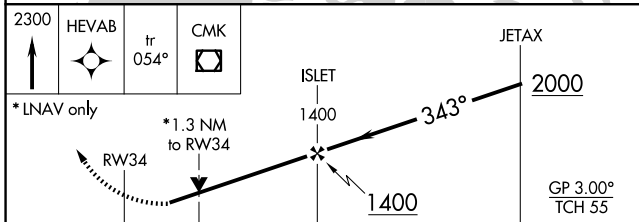
D-ATIS 133.8	NEW YORK APP CON 120.8 126.4 257.65	WESTCHESTER TOWER ★ 118.575 (CTAF) 0 284.65	GND CON 121.825	CLNC DEL 127.25	CLNC DEL 126.4 (when twr closed)	UNICOM 122.95
------------------------	---	---	---------------------------	---------------------------	---	-------------------------



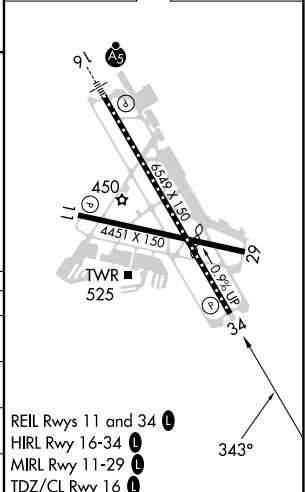
NE-2, 23 JAN 2025 to 20 FEB 2025

NE-2, 23 JAN 2025 to 20 FEB 2025

ELEV	439	D	TDZE	401
------	-----	---	------	-----



ELEV	439	D	TDZE	401
------	-----	---	------	-----



CATEGORY	A	B	C	D
LPV DA	723/60 322 (300-1¼)			
LNAV/VNAV DA	780-1½ 379 (400-1½)			
LNAV MDA	840/50 439 (500-1)	840/60 439 (500-1¼)	840-1½ 439 (500-1½)	
C CIRCLING	980-1 541 (600-1)	1080-1¾ 641 (700-1¾)	1200-2½ 761 (800-2½)	