

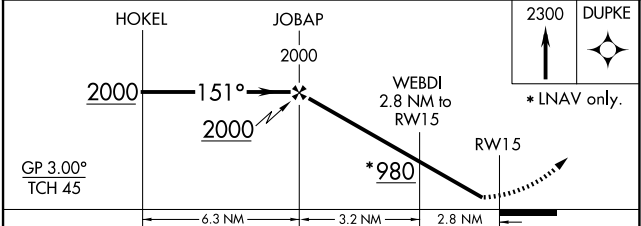
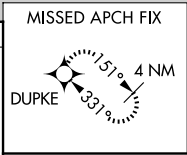
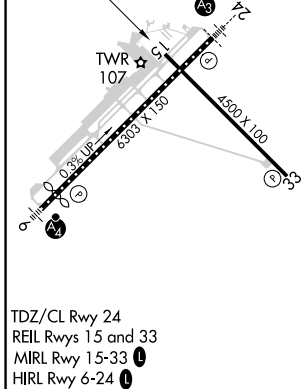
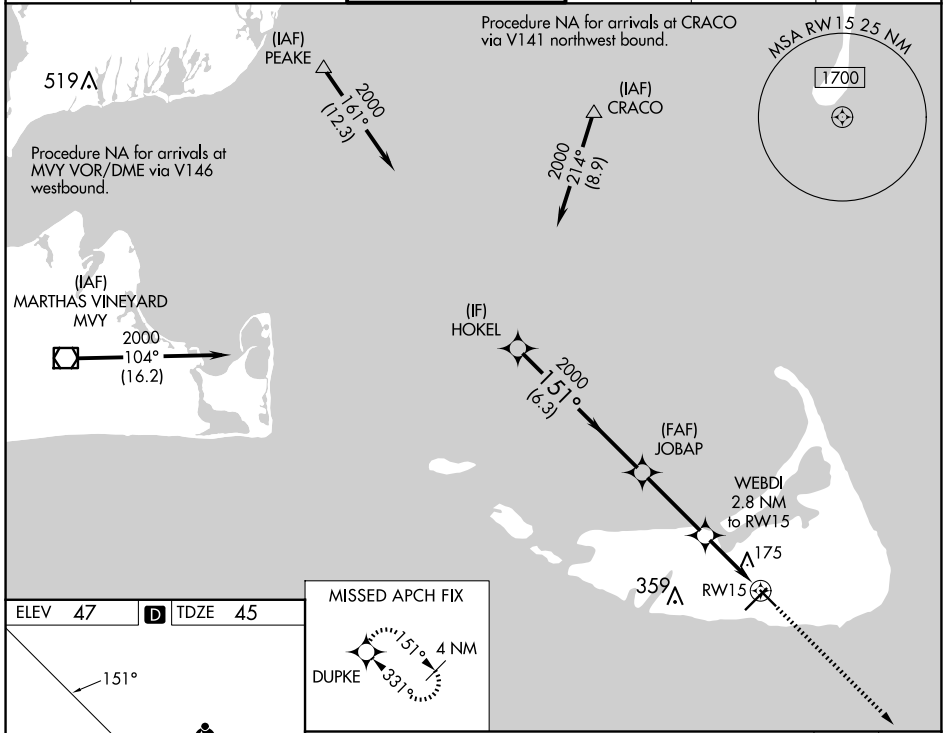
WAAS CH <b>97623</b> <b>W15A</b>	APP CRS <b>151°</b>	Rwy Idg <b>4500</b> TDZE <b>45</b> Apt Elev <b>47</b>
--	------------------------	---

# RNAV (GPS) RWY 15

NANTUCKET MEML (ACK)

RNP APCH.		<p>Baro-VNAV NA when using Hyannis altimeter setting. For uncompensated Baro-VNAV systems, LNAV/VNAV NA below -15°C or above 43°C. Rwy 15 helicopter visibility reduction below 3/4 SM NA. When local altimeter setting not received, use Hyannis altimeter setting and increase LPV DA to 358, LNAV/VNAV DA to 543, and all MDA 80 feet; increase LNAV/VNAV all Cats and LNAV Cats C and D visibility 1/4 mile.</p>		<p>MISSED APPROACH: Climb to 2300 direct DUPKE and hold.</p>	
-----------	--	--	--	--	--

ATIS <b>127.5</b>	BOSTON APP CON <b>126.1 318.1</b>	NANTUCKET TOWER * <b>118.3 (CTAF) 0</b>	GND CON <b>132.5</b>	CLNC DEL <b>119.375</b>	UNICOM <b>122.95</b>
----------------------	--------------------------------------	--	-------------------------	----------------------------	-------------------------



CATEGORY	A	B	C	D
LPV DA	295-1 250 (300-1)			
LNAV/VNAV DA	480-1½ 435 (500-1½)			
LNAV MDA	440-1 395 (400-1)		440-1½ 395 (400-1½)	

NE-1, 23 JAN 2025 to 20 FEB 2025

NE-1, 23 JAN 2025 to 20 FEB 2025