

APP CRS	Rwy Idg	<b>4538</b>
<b>159°</b>	TDZE	<b>344</b>
	Apt Elev	<b>345</b>

# RNAV (GPS) RWY 14

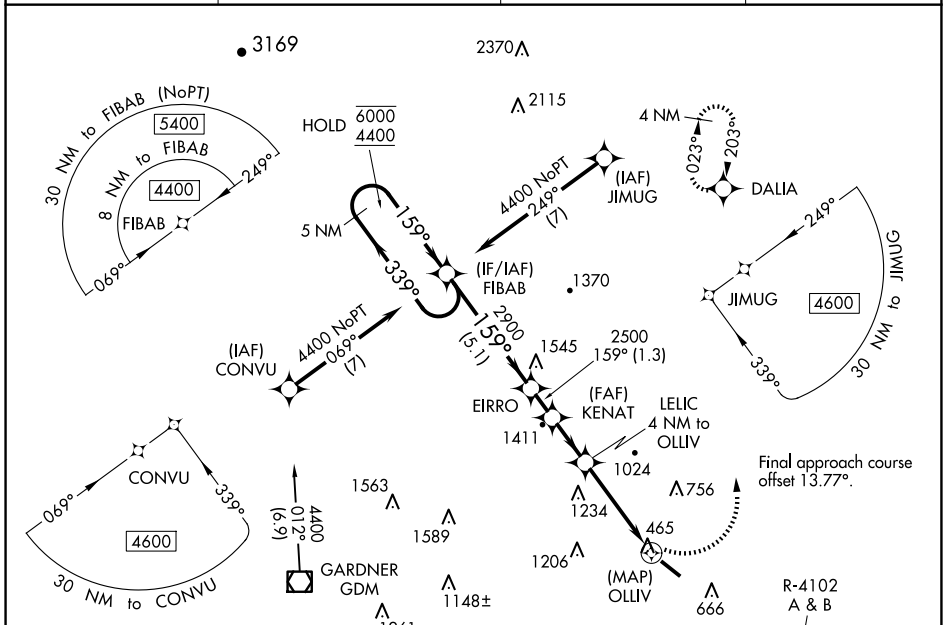
FITCHBURG MUNI (FIT)

RNP APCH.

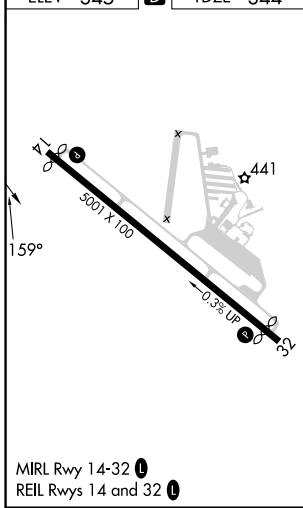
**⚠** Rwy 14 helicopter visibility reduction below 3/4 SM NA.  
**⚠** Circling NA southwest of Rwy 14-32 at night.  
**❄** -22°C

MISSED APPROACH: Climbing left turn to 3500 direct DALIA and hold.

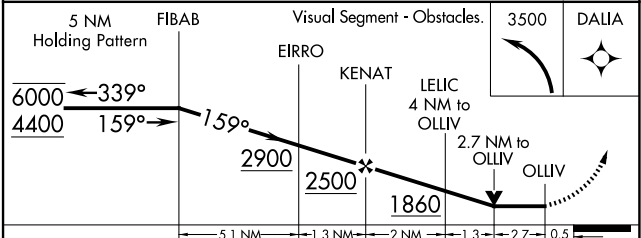
ASOS <b>135.175</b>	BOSTON APP CON <b>124.4 279.6</b>	UNICOM <b>122.7</b> (CTAF)	<b>123.0</b> <b>⓪</b>
------------------------	--------------------------------------	-------------------------------	-----------------------



ELEV 345	<b>D</b>	TDZE 344
----------	----------	----------



Procedure NA for arrival on GDM VOR/DME airway radials 339 CW 042.



CATEGORY	A	B	C	D
LNAV MDA	1420-1 1/4 1076 (1100-1 1/4)	1420-1 1/2 1076 (1100-1 1/2)	1420-3 1076 (1100-3)	NA
<b>C</b> CIRCLING	1420-1 1/4 1075 (1100-1 1/4)	1420-1 1/2 1075 (1100-1 1/2)	1520-3 1175 (1200-3)	NA

NE-1, 23 JAN 2025 to 20 FEB 2025

NE-1, 23 JAN 2025 to 20 FEB 2025