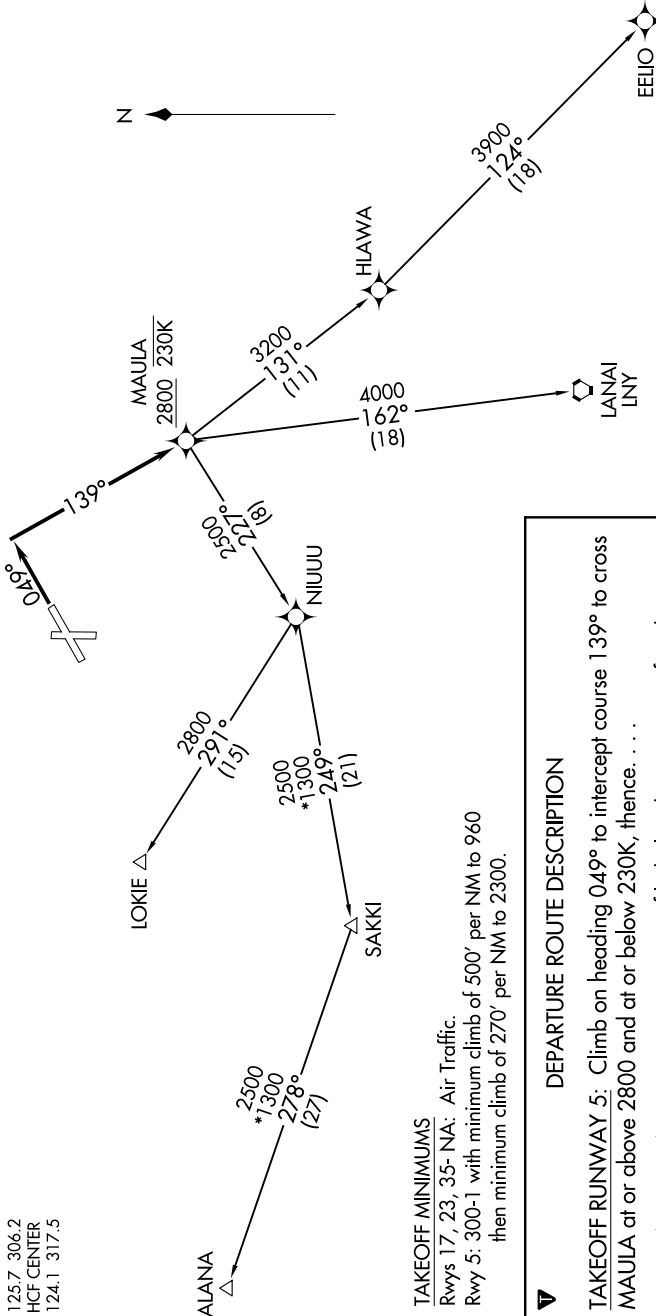


ATIS 128.2
 GND CON 121.9
 MOLOKAI TOWER* 125.7 306.2
 HCF CENTER 124.1 317.5

TOP ALTITUDE:
5000



TAKEOFF MINIMUMS

Rwy 17, 23, 35- NA: Air Traffic.
 Rwy 5: 300-1 with minimum climb of 500' per NM to 960
 then minimum climb of 270' per NM to 2300.

DEPARTURE ROUTE DESCRIPTION

TAKEOFF RUNWAY 5: Climb on heading 049° to intercept course 139° to cross MAULA at or above 2800 and at or below 230K, thence...

...on (transition) maintain 5000, expect filed altitude 5 minutes after departure.

ALANA TRANSITION (MAULA1.ALANA)

EELIO TRANSITION (MAULA1.EELIO)

LANAI TRANSITION (MAULA1.LNY)

LOKIE TRANSITION (MAULA1.LOKIE)

- NOTE: RNAV 1.
- NOTE: GPS required.
- NOTE: RADAR required.
- NOTE: Chart not to scale