

MARYSVILLE, CALIFORNIA

HI-TACAN Z RWY 33

TACAN BAB Chan 23	APCH CRS 317°	Rwy ldg 12,001	TDZE 105
		Arprt Elev 113	

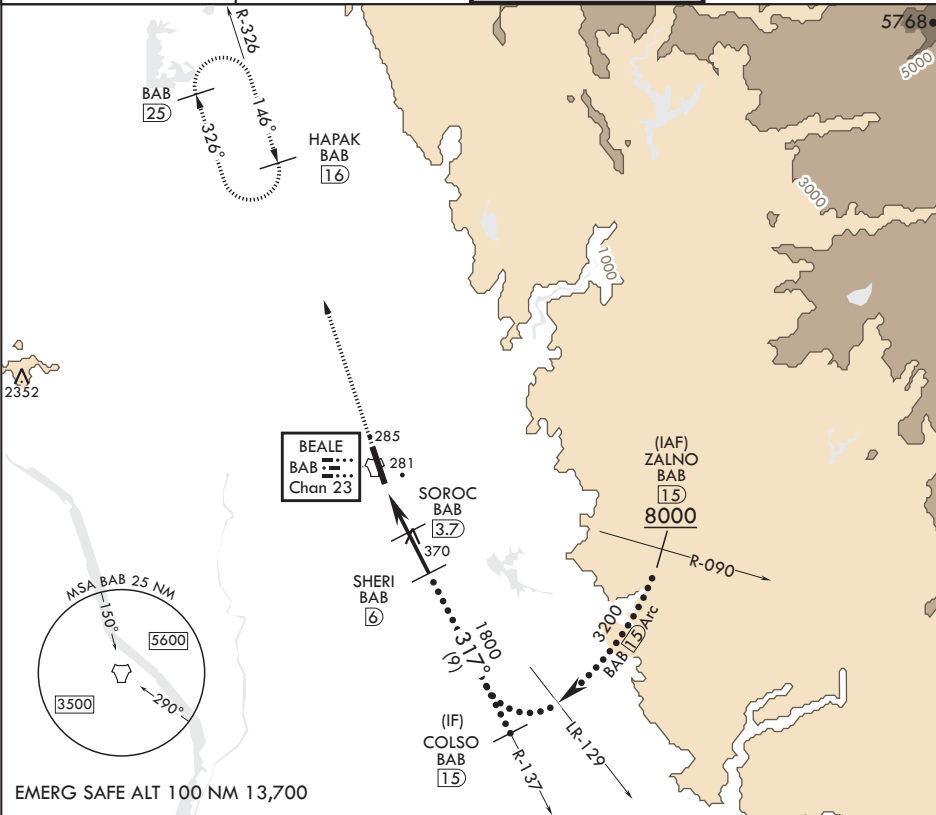
- (USAF)

BEALE AFB (KBAB)

⚠ * When ALS inop, increase CAT CDE vis to 1 1/4 miles.
 ** Circling not authorized NE of Rwy 15-33.

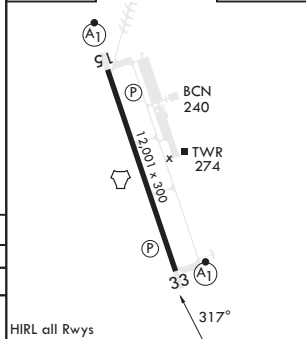
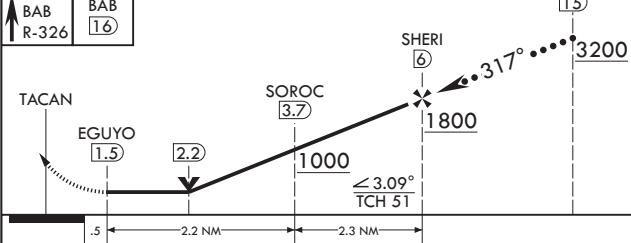
ALSF-1
 MISSED APPROACH: Climb to 3600, intercept BAB TACAN R-326 to HAPAK and hold.

ATIS* 124.55 273.5	NORCAL APP CON 125.4 259.1	TOWER* 119.4 284.75	GND CON 121.6 257.75
-----------------------	-------------------------------	------------------------	-------------------------



EMERG SAFE ALT 100 NM 13,700

3600 HAPAK BAB R-326	HAPAK BAB 16	COLSO 15	ELEV 113	TDZE 105
----------------------------	-----------------	-------------	----------	----------



CATEGORY	C	D	E
S-33*	540/40	435	(500-3/4)
CIRCLING**	600-1 1/2 487 (500-1 1/2)	800-2 1/4 687 (700-2 1/4)	800-2 1/2 687 (700-2 1/2)

HIRL all Rwy's

MARYSVILLE, CALIFORNIA

39°08'N - 121°26'W

BEALE AFB (KBAB)

Amdt 6 25JAN24

HI-TACAN Z RWY 33

SW-2, 23 JAN 2025 to 20 FEB 2025

SW-2, 23 JAN 2025 to 20 FEB 2025