

MARYSVILLE, CALIFORNIA

# RNAV (GPS) RWY 15

APCH CRS	Rwy Idg	12,001
145°	THRE	113
	Arprt Elev	113

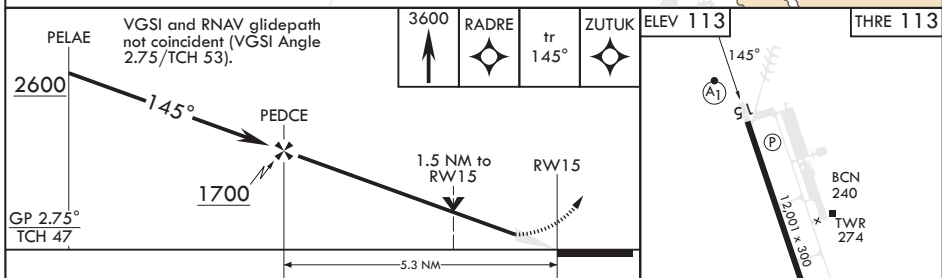
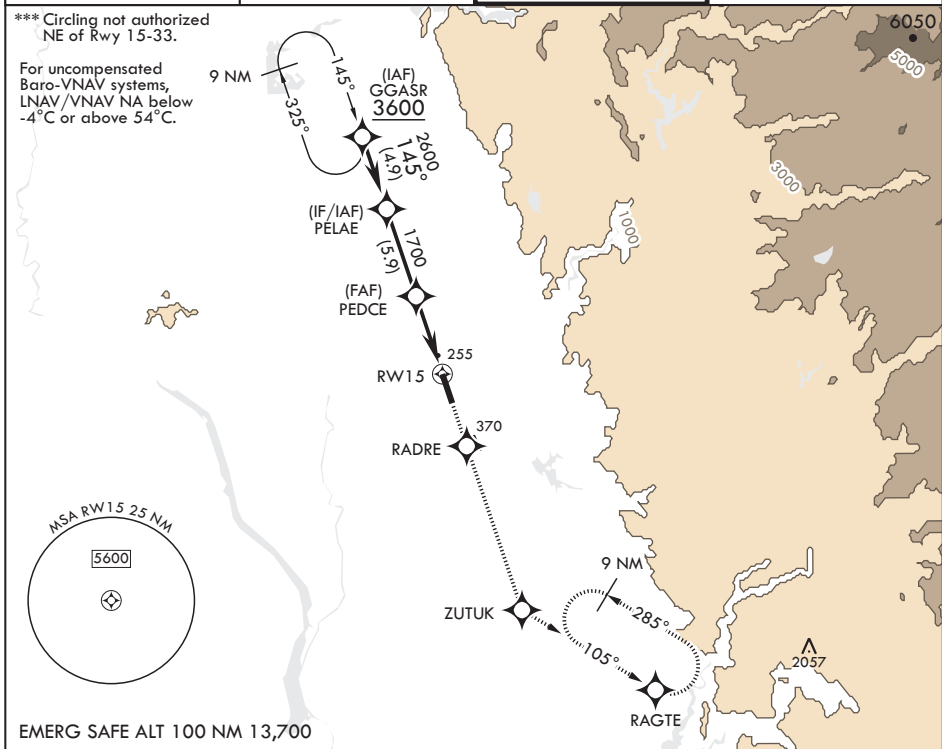
-(USAF)

BEALE AFB (KBAB)

RNP APCH  
 \* When ALS inop, increase RVR to 60, vis to 1 1/8 miles.  
 \*\* When ALS inop, increase CAT AB RVR to 55 and vis to 1 mile;  
 CAT CDE vis to 1 3/8 miles.

ALSF-1  
 MISSED APPROACH: Climb to 3600 direct RADRE, track 145° to ZUTUK, track 105° to RAGTE and hold, continue climb-in-hold to 3600.

ATIS★	NORCAL APP CON	TOWER★	GND CON
124.55 273.5	125.4 259.1	119.4 284.75	121.6 257.75



CATEGORY	A	B	C	D	E
LNAV/VNAV DA*	530/40		417		(500-3/4)
LNAV MDA**	600/24	487 (500-1/2)	600/50	487	(500-1)
<b>C</b> CIRCLING***	600-1	487 (500-1)	600-1 1/2 487 (500-1 1/2)	800-2 1/4 687 (700-2 1/4)	800-2 1/2 687 (700-2 1/2)

HIRL all Rwys

MARYSVILLE, CALIFORNIA  
 Amdt 2 25JAN24

39°08'N - 121°26'W

BEALE AFB (KBAB)

# RNAV (GPS) RWY 15

SW-2, 23 JAN 2025 to 20 FEB 2025

SW-2, 23 JAN 2025 to 20 FEB 2025