

MARYSVILLE, CALIFORNIA

TACAN Y RWY 33

TACAN BAB Chan 23	APCH CRS 317°	Rwy ldg TDZE Arprt Elev	12,001 105 113
----------------------	------------------	-------------------------------	----------------------

-(USAF)

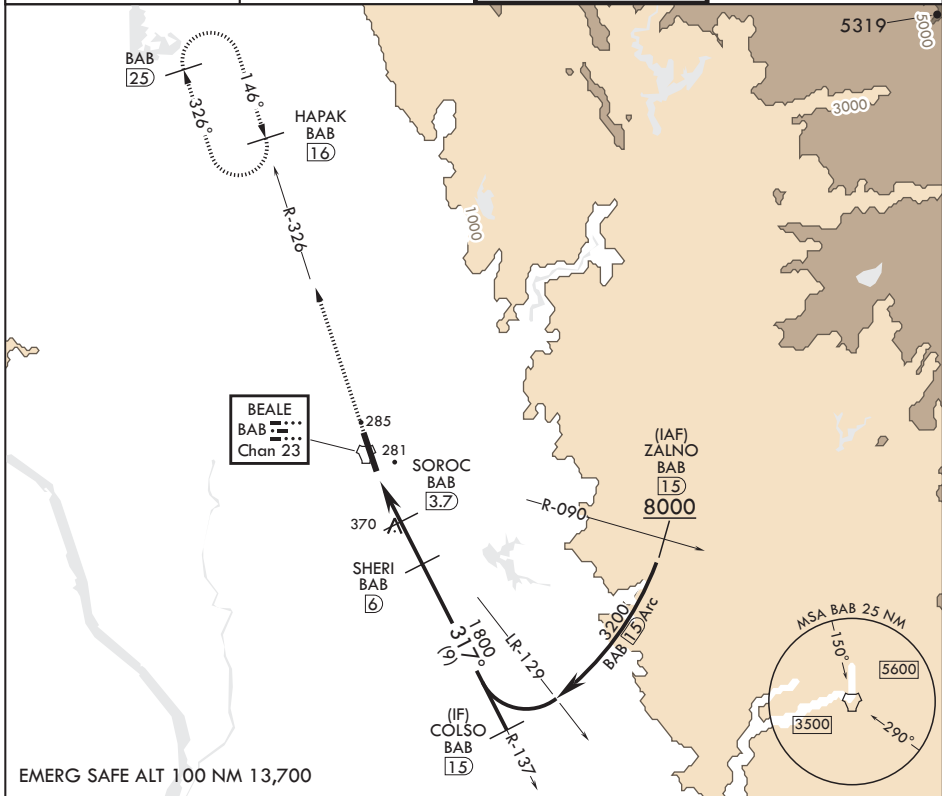
BEALE AFB (KBAB)

⚠ *When ALS inop, increase CAT AB RVR to 55 and vis to 1 mile, CAT CDE vis to 1 1/4 miles.
 **Circling not authorized E of Rwy 15-33.

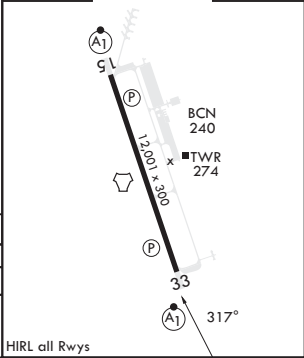
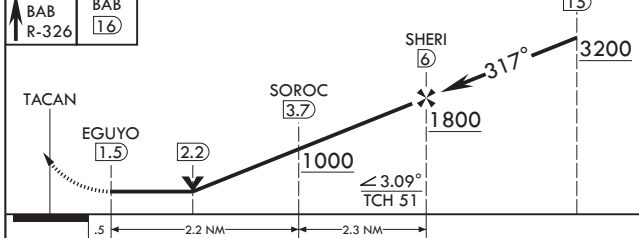


MISSED APPROACH: Climb to 3600 intercept BAB TACAN R-326 to HAPAK and hold.

ATIS* 124.55 273.5	NORCAL APP CON 125.4 259.1	TOWER* 119.4 284.75	GND CON 121.6 257.75
-----------------------	-------------------------------	------------------------	-------------------------



3600 ↑ BAB R-326	HAPAK BAB 16	COLSO 15	ELEV 113	TDZE 105
---------------------------	--------------------	-------------	----------	----------



CATEGORY	A	B	C	D	E
S-33*	540/24 435 (500-1/2)	540/40	435	500-3/4	
C CIRCLING**	600-1 487 (500-1)	600-1 1/2 487 (500-1 1/2)	800-2 1/4 687 (700-2 1/4)	800-2 1/2 687 (700-2 1/2)	

HIRL all Rwys

MARYSVILLE, CALIFORNIA
Amdt 6 25JAN24

39°08'N - 121°26'W

BEALE AFB (KBAB)

TACAN Y RWY 33

SW-2, 23 JAN 2025 to 20 FEB 2025

SW-2, 23 JAN 2025 to 20 FEB 2025