

(JHAWK.JHAWK8) 24137

JHAWK EIGHT ARRIVAL

AL-780 (FAA)

KANSAS CITY, MISSOURI

KANSAS CITY APP CON
 120.95 318.1
 MCI D-ATIS
 128.375
 MKC ATIS
 120.75
 OJC ATIS
 119.35
 STJ ATIS
 125.05

RADAR required.

ROSECRANS
 MEML

KANSAS CITY
 113.25 MCI Chan 79(Y)

TOPEKA
 117.8 TOP Chan 125

RUGBB
 Jets landing south:
 Expect 12000

SHERMAN
 AAF

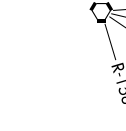
MIDWEST NTL
 AIR CENTER

CHARLES B WHEELER
 DOWNTOWN

LEE'S SUMMIT MUNI

NEW CENTURY
 AIRCENTER

JOHNSON COUNTY
 EXEC



JHAWK
 Jets landing north:
 Expect 12000

EMPORIA
 112.8 EMP Chan 75

NOTE: Chart not to scale.

ARRIVAL ROUTE DESCRIPTION

EMPORIA TRANSITION (EMP.JHAWK8): From over EMP VORTAC on EMP R-039 and MCI R-223 to JHAWK. Thence. . .

LANDING KANSAS CITY INTL (MCI):

RUNWAYS 19L/R: From over JHAWK on MCI R-223 to NOAHS then on heading 010°. Thence. . .

RUNWAYS 1L/R: From over JHAWK on MCI R-223 to HOOZE then on heading 060°. Thence. . .

RUNWAYS 9, 27: From over JHAWK on MCI R-223 to HOOZE. Thence. . .

LANDING CHARLES B WHEELER DOWNTOWN (MKC):

RUNWAYS 1, 4: From over JHAWK on MCI R-223 to HOOZE. Thence. . .

RUNWAYS 19, 22: From over JHAWK on MCI R-223 to NOAHS then on heading 010°. Thence. . .

LANDING ROSECRANS MEML (STJ) AND SHERMAN AAF (FLV):

From over JHAWK on MCI R-223 to NOAHS then on heading 010°. Thence. . .

ALL OTHER AIRPORTS: From over JHAWK on MCI R-223 to HOOZE. Thence. . .

. . . expect RADAR vectors to final approach course.

JHAWK EIGHT ARRIVAL

(JHAWK.JHAWK8) 16MAY24

KANSAS CITY, MISSOURI

NC-3, 23 JAN 2025 to 20 FEB 2025

NC-3, 23 JAN 2025 to 20 FEB 2025