

WAAS CH <b>77523</b> <b>W17A</b>	APP CRS <b>166°</b>	Rwy Idg TDZE Apt Elev	<b>13052</b> <b>2830</b> <b>2885</b>
----------------------------------------	------------------------	-----------------------------	--------------------------------------------

# RNAV (GPS) RWY 17

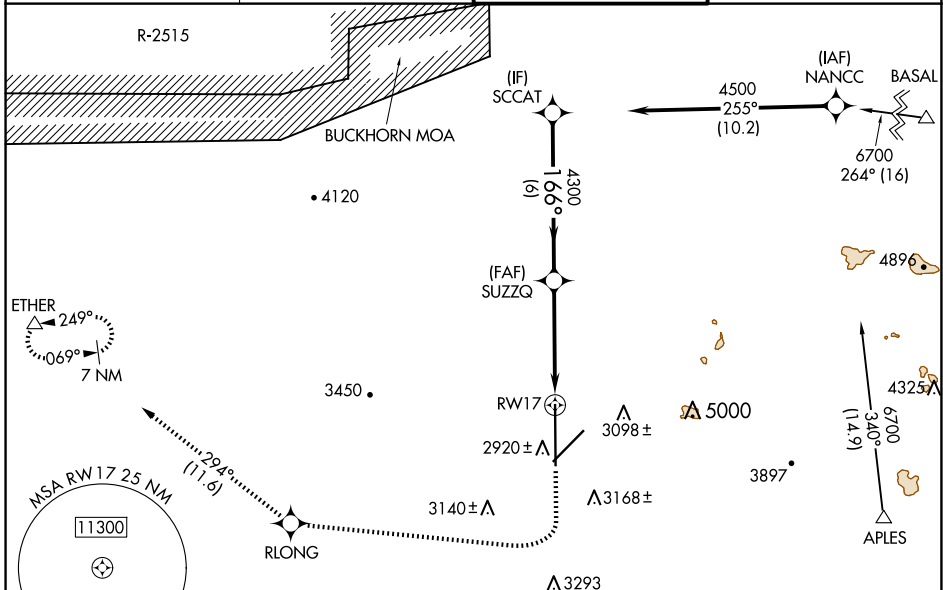
SOUTHERN CALIFORNIA LOGISTICS (V'CV)

RNP APCH - GPS.

**⚠** Circling NA for Cats C and D southeast of Rwy 35-21. Baro-VNAV and VDP NA when using Edwards AFB altimeter setting. For uncompensated Baro-VNAV systems, LNAV/VNAV NA below -20°C or above 54°C. When local altimeter setting not received, use Edwards AFB altimeter setting: increase LPV DA to 3183 feet and all visibilities to RVR 5500; increase LNAV/VNAV DA to 3233 feet and all visibilities to RVR 6000. Increase all MDAs 160 feet and Circling visibility Cat C 1/2 SM.

**MISSED APPROACH:** Climb to 3500 then climbing right turn to 6000 direct RLONG and on track 294° to ETHER and hold.

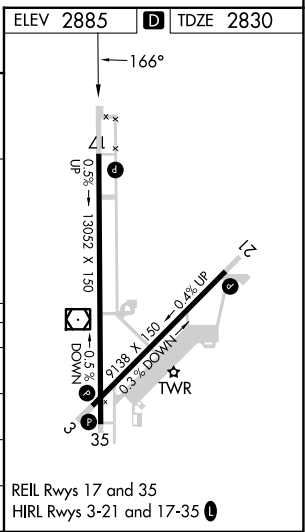
ATIS * <b>135.475</b>	JOSHUA APP CON <b>124.55 363.0</b>	VICTORVILLE TOWER * <b>118.35 (CTAF) 0 282.225</b>	GND CON <b>124.45</b>
--------------------------	---------------------------------------	-------------------------------------------------------	--------------------------



VGSI and RNAV glidepath not coincident (VGSI Angle 3.00/TCH 81).

	SCCAT	SUZZQ	RLONG	ETHER
GP 3.00° TCH 60	4500	4300	0.9 NM to RWY 17	
Distance	6 NM	3.6 NM	0.9 NM	
ANGLE	166°		294°	

CATEGORY	A	B	C	D
LPV DA		3030/40	200 (200-3/4)	
LNAV/VNAV DA		3080/40	250 (200-3/4)	
LNAV MDA		3180/55	350 (300-1)	
CIRCLING	3380-1 495 (500-1)	3420-1 535 (600-1)	3460-1 1/2 575 (600-1 1/2)	3780-3 895 (900-3)



REIL Rwy 17 and 35  
HIRL Rwy 3-21 and 17-35

SW-3, 23 JAN 2025 to 20 FEB 2025

SW-3, 23 JAN 2025 to 20 FEB 2025