

LOC/DME I-PUW <b>110.35</b> Chan 40(Y)	APP CRS <b>050°</b>	Rwy Idg TDZE Apt Elev	<b>7100</b> <b>2567</b> <b>2567</b>
--	------------------------	-----------------------------	---


# ILS or LOC RWY 5

PULLMAN/MOSCOW RGNL (PUW)

DME required.

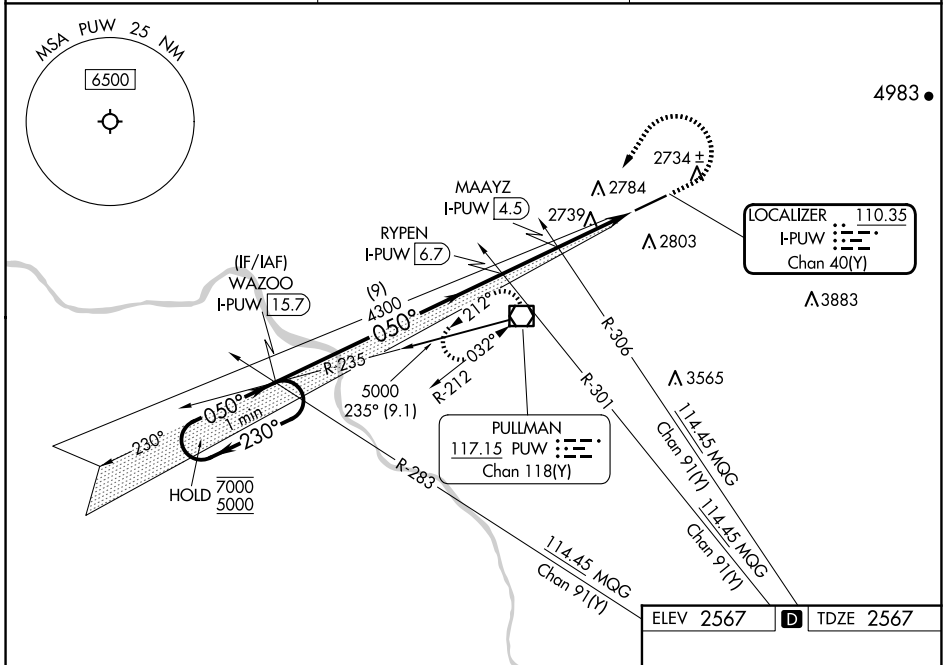
**⚠** For inop ALS, increase S-ILS 5 all Cats visibility to RVR 4500 and S-LOC 5 Cat C/D visibility to 1 1/2 SM.  
† RVR 1800 authorized with use of FD or AP or HUD to DA.

**MALSR**



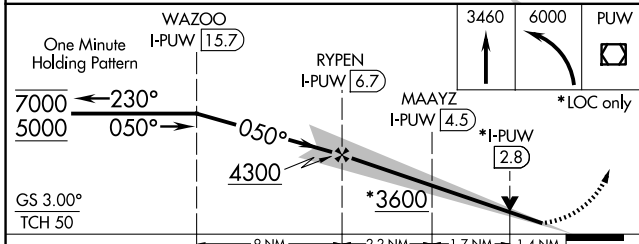
MISSED APPROACH: Climb to 3460 then climbing left turn to 6000 direct PUW VOR/DME, continue climb-in-hold to 6000.  
# Missed approach requires minimum climb of 222 feet per NM to 4180.

ASOS <b>135.675</b>	SEATTLE CENTER <b>123.95 290.55</b>	UNICOM <b>122.8 (CTAF) 0</b>
------------------------	--	---------------------------------



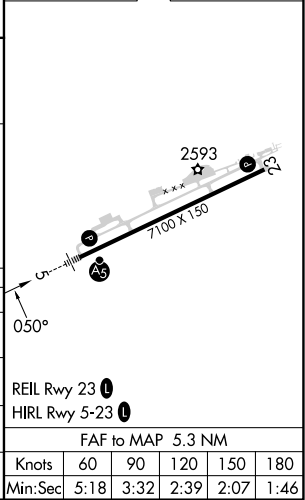
NW-1, 23 JAN 2025 to 20 FEB 2025

NW-1, 23 JAN 2025 to 20 FEB 2025



ELEV 2567	<b>D</b> TDZE 2567
-----------	--------------------

CATEGORY	A	B	C	D
S-ILS 5 #†		2767/24	200 (200-1/2)	
S-ILS 5		2857/24	290 (300-1/2)	
S-LOC 5	3060/24	493 (500-1/2)	3060/50	493 (500-1)
<b>C</b> CIRCLING	3080-1 513 (600-1)	3120-1 553 (600-1)	3140-1 1/2 573 (600-1/2)	3420-2 3/4 853 (900-2 3/4)



FAF to MAP 5.3 NM					
Knots	60	90	120	150	180
Min:Sec	5:18	3:32	2:39	2:07	1:46