

WAAS CH 40243 W05B	APP CRS 049°	Rwy Idg TDZE Apt Elev	7100 2567 2567
----------------------------------------	------------------------	-----------------------------	-------------------------------------------

RNAV (GPS) RWY 5

PULLMAN/MOSCOW RGNL (PUW)

RNP APCH.

⚠ For uncompensated Baro-VNAV systems, LNAV/VNAV NA below -20° C or above 54° C. For inop ALS, increase LPV all Cats visibility to RVR 4500 and LNAV Cat C/D visibility to 1 3/8 SM. † RVR 1800 authorized with use of FD or AP or HUD to DA.

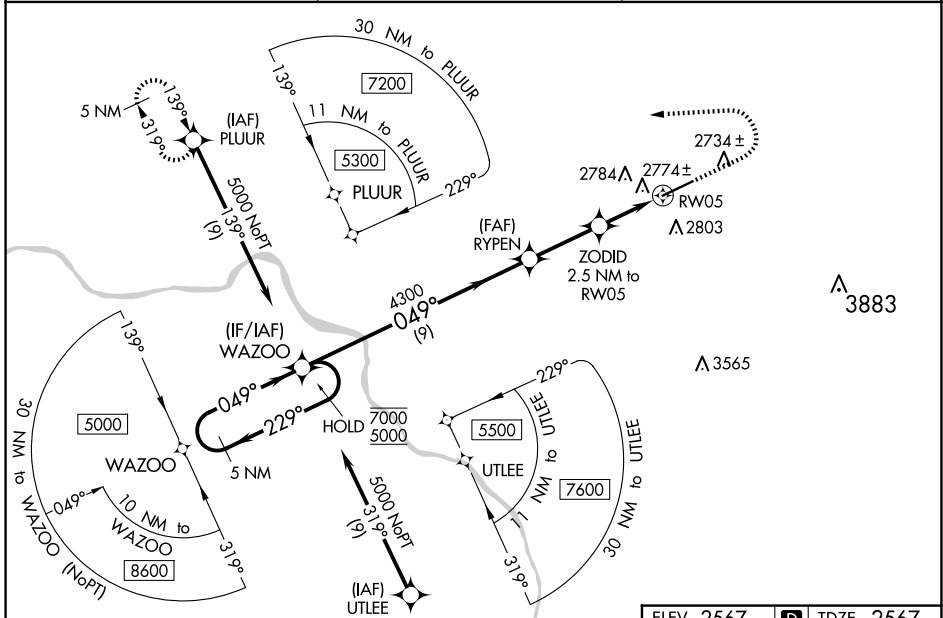
MALSR



MISSED APPROACH: Climb to 3460 then climbing left turn to 5400 direct PLUUR and hold.

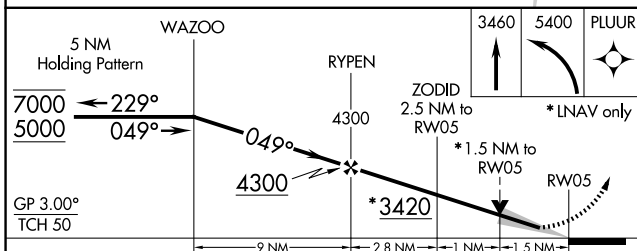
Missed approach requires minimum climb of 250 feet per NM to 4800.

ASOS 135.675	SEATTLE CENTER 123.95 290.55	UNICOM 122.8 (CTAF) 0
------------------------	----------------------------------------	---------------------------------



NW-1, 23 JAN 2025 to 20 FEB 2025

NW-1, 23 JAN 2025 to 20 FEB 2025



ELEV 2567	D TDZE 2567
-----------	--------------------

CATEGORY	A	B	C	D
LPV DA#†		2767/24	200 (200-1/2)	
LPV DA		2846/24	279 (300-1/2)	
LNAV/VNAV DA		3005/40	438 (500-3/4)	
LNAV MDA	3080/24	513 (600-1/2)	3080/55	513 (600-1)
C CIRCLING	3080-1 513 (600-1)	3120-1 553 (600-1)	3140-1 1/2 573 (600-1 1/2)	3420-2 3/4 853 (900-2 3/4)

