

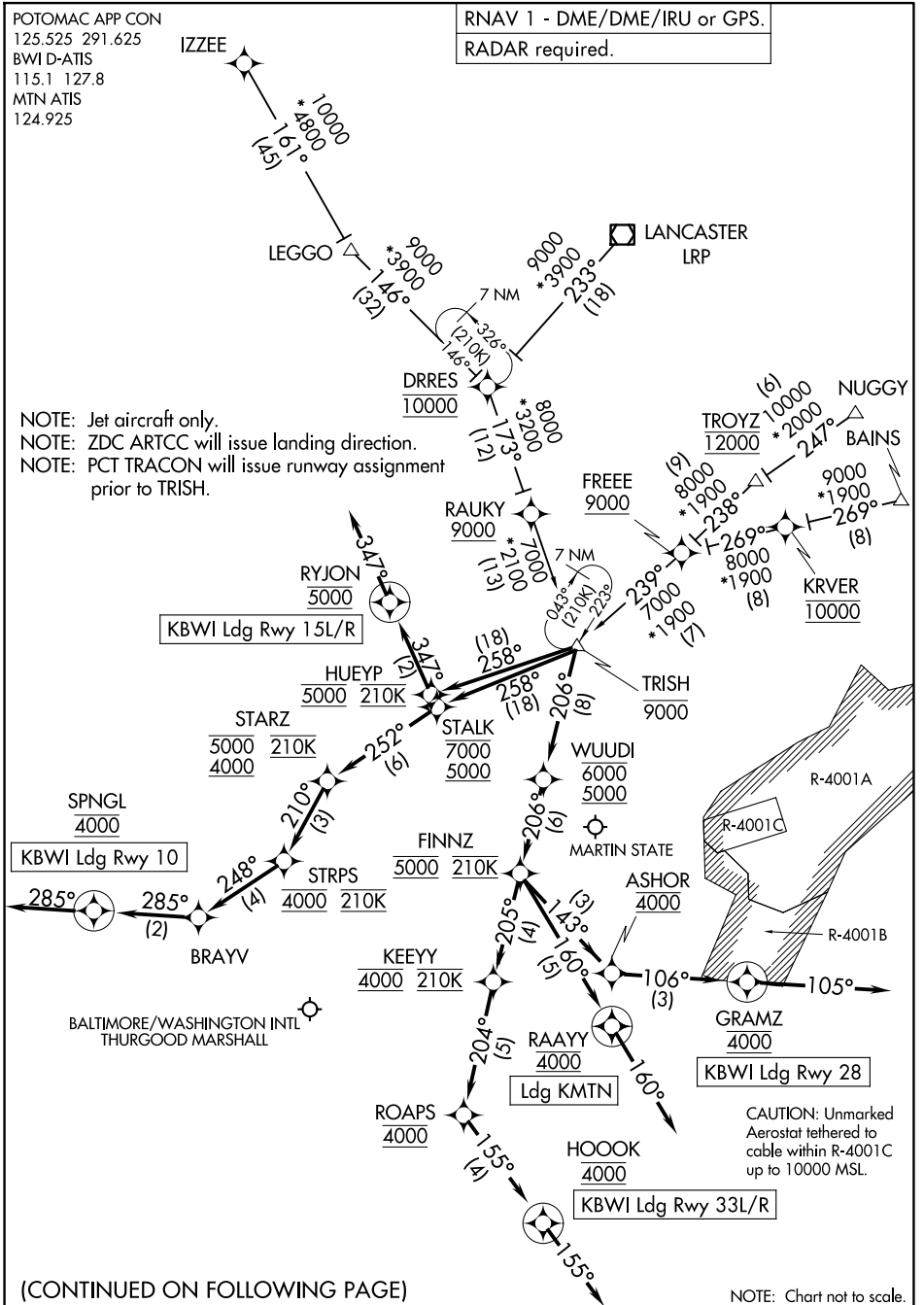
TRISH FOUR ARRIVAL (RNAV)

BALTIMORE, MARYLAND

POTOMAC APP CON
 125.525 291.625
 BWI D-ATIS
 115.1 127.8
 MTN ATIS
 124.925

RNAV 1 - DME/DME/IRU or GPS.
 RADAR required.

NOTE: Jet aircraft only.
 NOTE: ZDC ARTCC will issue landing direction.
 NOTE: PCT TRACON will issue runway assignment prior to TRISH.



NE-3, 23 JAN 2025 to 20 FEB 2025

NE-3, 23 JAN 2025 to 20 FEB 2025

(CONTINUED ON FOLLOWING PAGE)

NOTE: Chart not to scale.

TRISH FOUR ARRIVAL (RNAV)

BALTIMORE, MARYLAND