

LOC/DME I-TEB <b>111.75</b> Chan <b>54 (Y)</b>	APP CRS <b>060°</b>	Rwy Idg <b>6013</b> TDZE <b>6</b> Apt Elev <b>8</b>
--	------------------------	---

# COPTER ILS Y or LOC Y RWY 6

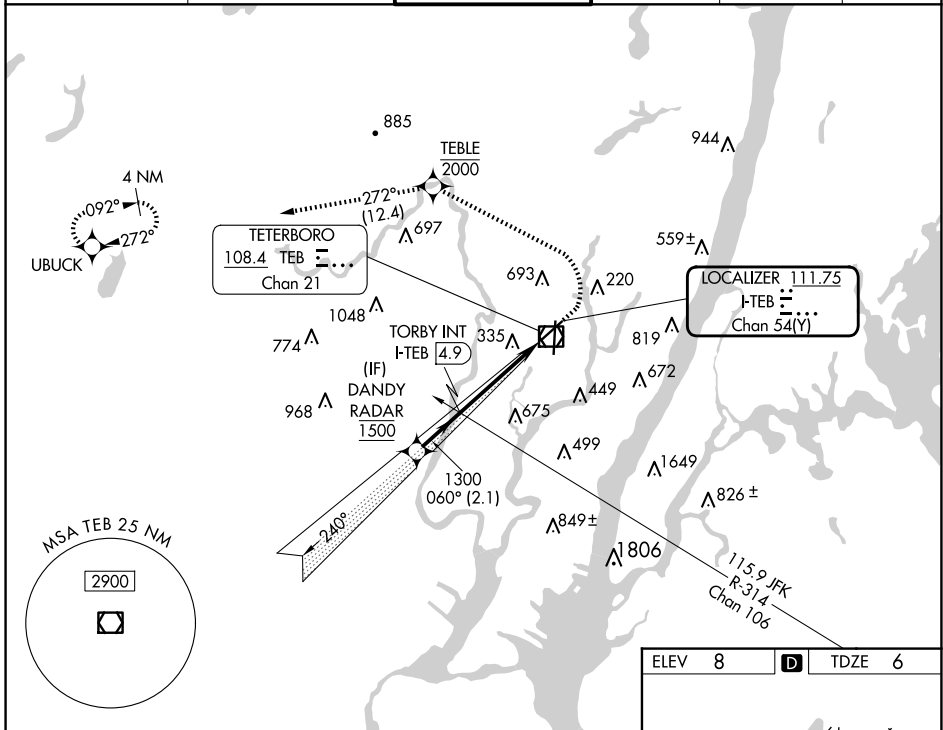
TETERBORO (TEB)

RNP APCH - GPS.  
RADAR required.  
▼  
▲NA



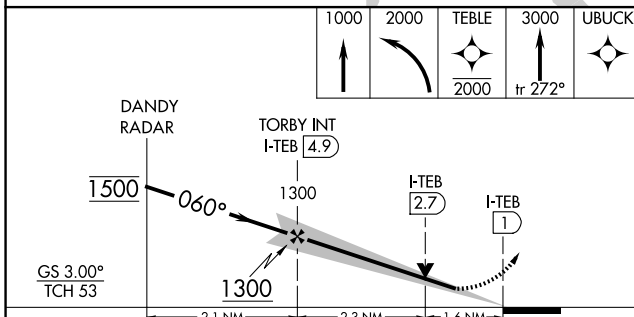
MISSED APPROACH: Climb to 1000, then climbing left turn to 2000 direct TEBLE, cross TEBLE at or below 2000, then climb to 3000 on track 272° to UBUCK and hold.

D-ATIS <b>114.2 132.85</b>	NEWARK APP CON <b>127.6 379.9</b>	TETERBORO TOWER <b>119.5</b>	GND CON <b>121.9</b>	CLNC DEL <b>128.05</b>	CPDLC
-------------------------------	--------------------------------------	---------------------------------	-------------------------	---------------------------	-------

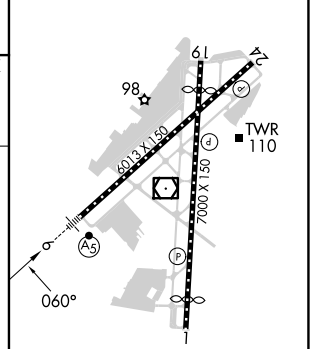


NE-2, 23 JAN 2025 to 20 FEB 2025

NE-2, 23 JAN 2025 to 20 FEB 2025



ELEV 8	D	TDZE 6
--------	---	--------



TDZ/CL Rws 6 and 19 REIL Rws 1, 6, 19 and 24 HIRL Rws 1-19 and 6-24					
FAF to MAP 3.9 NM					
Knots	45	60	75	90	105
Min:Sec	5:12	3:54	3:07	2:36	2:14

CATEGORY	COPTER	
H-ILS 6	206/12	200 (200-¼)
H-LOC 6	580/24	574 (600-½)

# COPTER ILS Y or LOC Y RWY 6