

APP CRS	Rwy Idg	<b>6230</b>
<b>195°</b>	TDZE	<b>6</b>
	Apt Elev	<b>8</b>

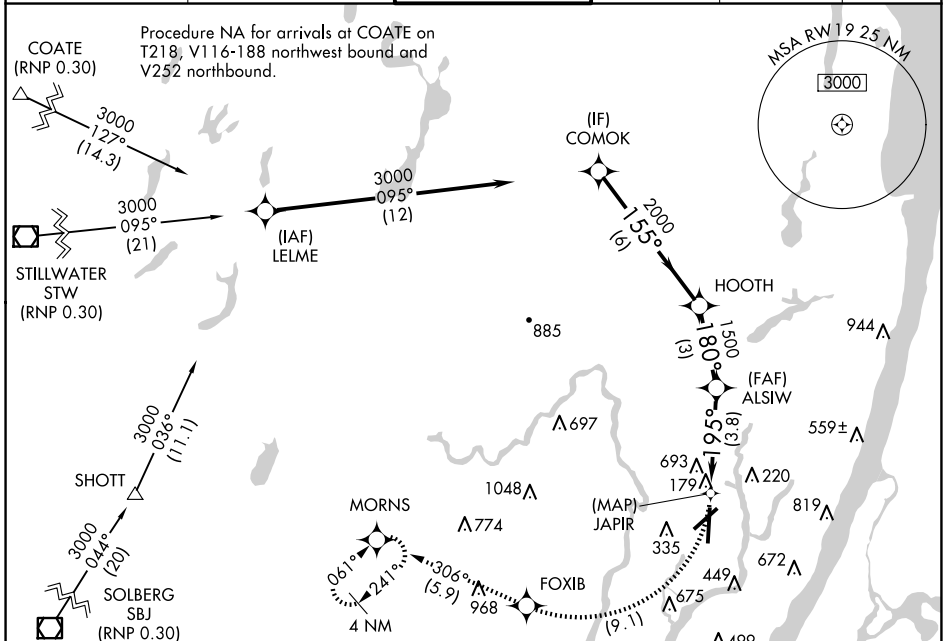
# RNAV (RNP) Z RWY 19

TEREBORO (TEB)

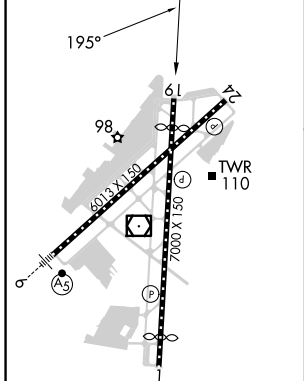
**▼** For uncompensated Baro-VNAV systems, procedure NA below -13°C (8°F) or above 54°C (130°F). RF required. GPS required.  
**▲ NA** Missed approach requires RNP less than 1.0.

MISSED APPROACH: Climb to 1500 via right turn to FOXIB, then climb to 3000 on track 306° to MORNNS and hold.

D-ATIS	NEWARK APP CON	TEREBORO TOWER	GND CON	CLNC DEL	CPDLC
<b>114.2 132.85</b>	<b>127.6 379.9</b>	<b>119.5</b>	<b>121.9</b>	<b>128.05</b>	

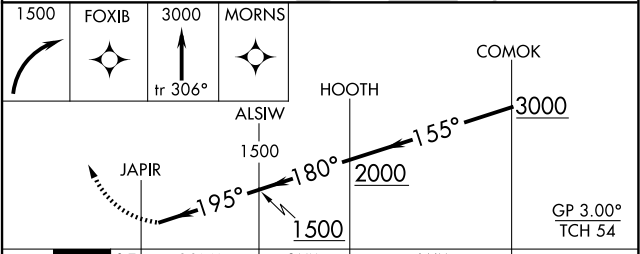


ELEV	<b>8</b>	<b>D</b>	TDZE	<b>6</b>
------	----------	----------	------	----------



TDZ/CL Rws 6 and 19  
 REIL Rws 1, 6, 19 and 24  
 HIRL Rws 1-19 and 6-24

Procedure NA for arrivals on SBJ VOR/DME airway radials 028 CW 117.



CATEGORY	A	B	C	D
RNP 0.10 DA	499-1¾ 493 (500-1¾)			

**AUTHORIZATION REQUIRED**

NE-2, 23 JAN 2025 to 20 FEB 2025

NE-2, 23 JAN 2025 to 20 FEB 2025