

|  |                        |                             |   |
|--|------------------------|-----------------------------|---|
| WAAS<br>CH <b>50115</b><br><b>W11A</b> | APP CRS<br><b>106°</b> | Rwy Idg<br>TDZE<br>Apt Elev | <b>7504</b><br><b>147</b><br><b>151</b> |
|--|------------------------|-----------------------------|---|

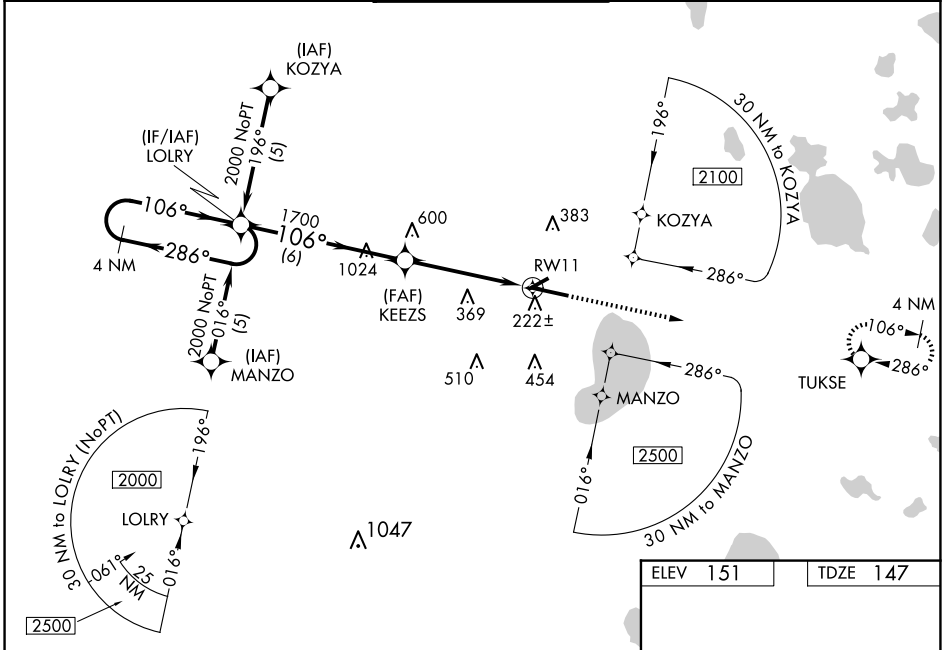
# RNAV (GPS) RWY 11

GAINESVILLE RGNL (GNTV)

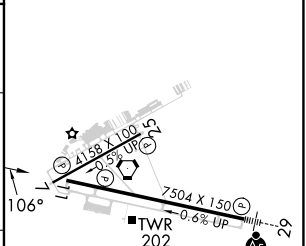
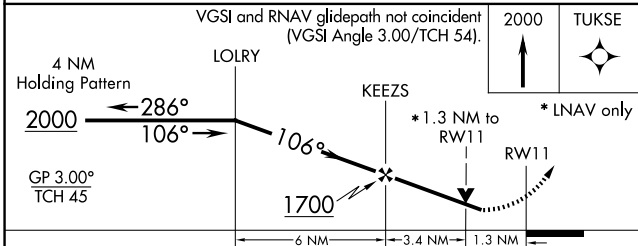
**⚠** For uncompensated Baro-VNAV systems, LNAV/VNAV NA below -15° C (5° F) or above 48° C (120° F). DME/DME RNP-0.3 NA. When local altimeter setting not received, use Ocala Intl-Jim Taylor Fld altimeter setting and increase LPV DA to 541 feet and all Cats visibility ½ SM; increase LNAV/VNAV DA to 681 feet and all Cats visibility ½ SM; increase all MDAs 100 feet and increase LNAV Cat C/D and Circling Cat C visibility ¼ SM and Circling Cat D ½ SM. Visibility reduction by helicopters NA. Baro-VNAV NA when using Ocala Intl-Jim Taylor Fld altimeter setting. When VGSI inoperative, Circling Rwy 25 NA at night. VDP NA when using Ocala Intl-Jim Taylor Fld altimeter setting.

MISSED APPROACH: Climb to 2000 direct TUKSE and hold.

|                       |   |  |                         |                         |
|-----------------------|---|--|-------------------------|-------------------------|
| ATIS<br><b>127.15</b> | JACKSONVILLE APP CON<br><b>118.175 338.25</b> | GAINESVILLE TOWER★<br><b>119.55 (CTAF) 0 353.7</b> | GND CON<br><b>121.7</b> | UNICOM<br><b>122.95</b> |
|-----------------------|---|--|-------------------------|-------------------------|



|          |          |
|----------|----------|
| ELEV 151 | TDZE 147 |
|----------|----------|



| CATEGORY     | A                   | B                   | C                   | D                   |
|--------------|---------------------|---------------------|---------------------|---------------------|
| LPV DA       | 460-1 313 (400-1)   |                     |                     |                     |
| LNAV/DA VNAV | 600-1½ 453 (500-1½) |                     |                     |                     |
| LNAV MDA     | 600-1 453 (500-1)   | 600-1¼ 453 (500-1¼) |                     | 600-1½ 453 (500-1½) |
| CIRCLING     | 620-1 469 (500-1)   | 700-1 549 (600-1)   | 760-1¾ 609 (700-1¾) | 820-2 669 (700-2)   |

REIL Rwy 11  
MRL Rwy 7-25  
HIRL Rwy 11-29

SE-3, 23 JAN 2025 to 20 FEB 2025

SE-3, 23 JAN 2025 to 20 FEB 2025