

LOC/DME I-JDL	APP CRS	Rwy Idg	<b>8457</b>
<b>109.9</b>	<b>071°</b>	TDZE	<b>25</b>
Chan <b>36</b>		Apt Elev	<b>25</b>

# LDA X RWY 8

JUNEAU INTL (JNU)(PAJN)

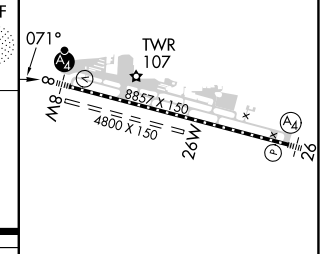
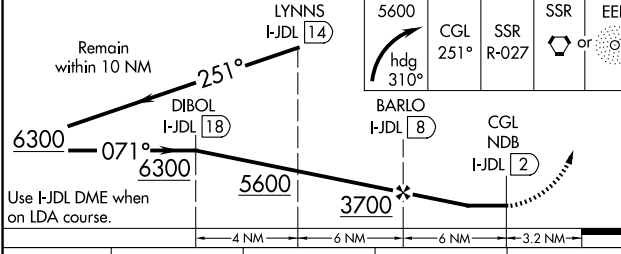
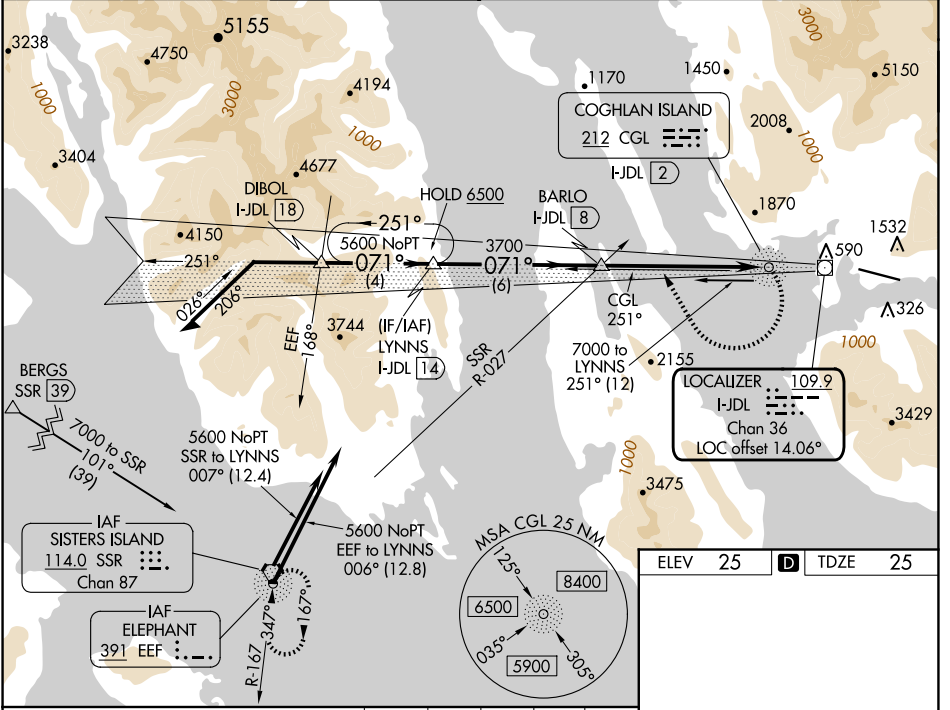
ADF required.

**⚠** Circling to Rwy 26 NA at night. Circling NA north of Rwy 8-26. Rwy 8 helicopter visibility reduction below 1 SM NA. Inop table does not apply. When Juneau altimeter setting not received, procedure NA. CAUTION: Any go-around after passing MAP will not provide standard obstruction clearance. Circling Cat A night visibility minimum 5 SM, Circling Cat B, C, D night visibility minimum 10 SM. Straight-in Rwy 8 at night, operational VGSI required, remain on or above VGSI glidepath until threshold.

**MALSF**

**⚠** MISSED APPROACH: Immediate climbing right turn to 5600 on heading 310° and on CGL NDB bearing 251° to intercept SSR VORTAC R-027 direct SSR VORTAC or EEF NDB and hold.

ATIS <b>135.2</b>	ANCHORAGE CENTER <b>133.9</b>	JUNEAU TOWER * <b>118.7</b> (CTAF) <b>278.3</b>	GND CON <b>121.9</b>	CLNC DEL <b>121.9</b>	JUNEAU RADIO <b>122.2</b>	UNICOM <b>122.95</b>
----------------------	----------------------------------	--	-------------------------	--------------------------	------------------------------	-------------------------



CATEGORY	A	B	C	D	
S-LDA 8	3200-4	3175 (3200-4)		NA	RLS Rwy 8 REIL Rwy 8
CIRCLING	3200-4	3175 (3200-4)	3340-4 3315 (3400-4)	3700-4 3675 (3700-4)	REIL Rwy 26 HIRL Rwy 8-26

AK, 26 DEC 2024 to 20 FEB 2025

AK, 26 DEC 2024 to 20 FEB 2025