

HI-ILS Y or LOC/DME Y RWY 06L

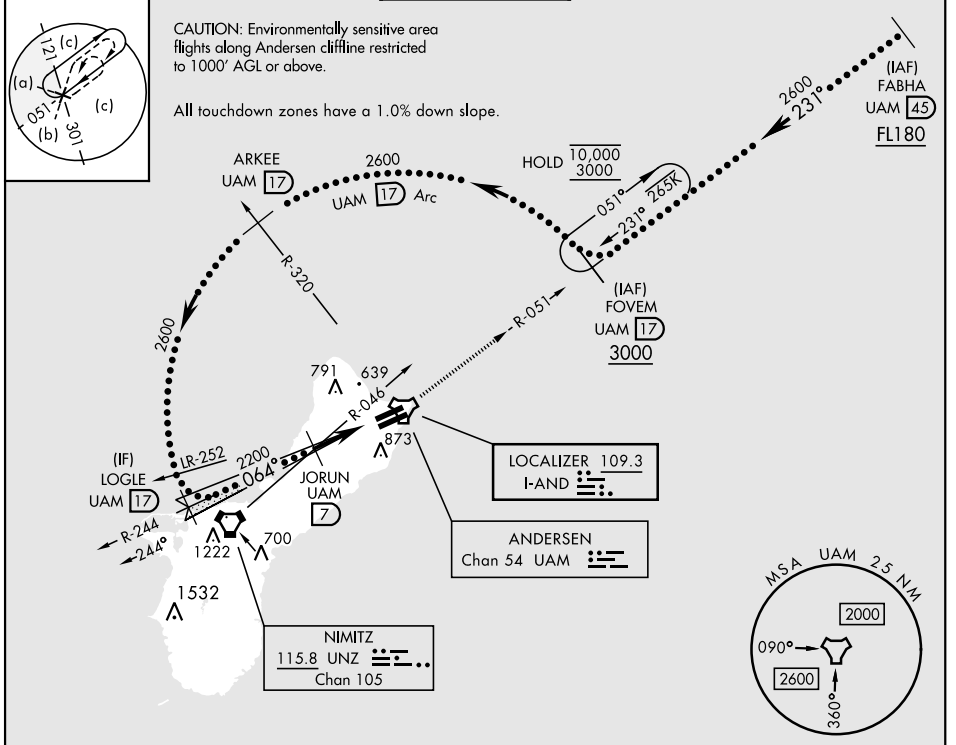
LOC I-AND 109.3	APCH CRS 064°	Rwy Idg 10,528 TDZE 539 Arprt Elev 617
---------------------------	-------------------------	---

AL-2147 [USAF]

ANDERSEN AFB (PGUA)

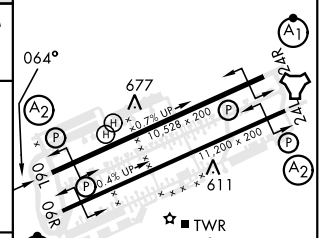
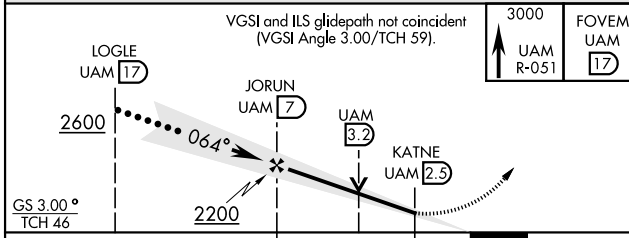
ATC RADAR monitoring required.	SALS (A2)	MISSED APPROACH: Climb to 3000, intercept UAM R-051 to FOVEM and hold.
<p>▼ * When ALS Inop, increase CAT AB RVR to 55, vis to 1 mile; CAT CDE vis to 1 3/8 miles. ** Circling not authorized NW of Rwy 06L-24R.</p>		

ATIS 118.175 254.325	GUAM APP CON 119.8 269.0	TOWER 126.2 233.7	GND CON 121.7 275.8	CLNC DEL 126.725 256.7
--------------------------------	------------------------------------	-----------------------------	-------------------------------	----------------------------------



EMERG SAFE ALT 100 NM 2900

ELEV	617	TDZE	539
------	-----	------	-----



CATEGORY	A	B	C	D	E
S-ILS 06L	739/40		200	(200-3/4)	
S-LOC 06L*	1020/40	481 (500-3/4)	1020/60		481 (500-1 1/8)
CIRCLING**	1060-1 443 (500-1)	1080-1 463 (500-1)	1240-1 3/4 623 (700-1 3/4)	1240-2 623 (700-2)	1240-2 1/4 623 (700-2 1/4)

HIRL all rwys

YIGO, GUAM I, GUAM 13° 35' N-144° 56' E ANDERSEN AFB (PGUA)

HI-ILS Y or LOC/DME Y RWY 06L

PAC, 26 DEC 2024 to 20 FEB 2025

PAC, 26 DEC 2024 to 20 FEB 2025