

YIGO, GUAM I, GUAM

ILS Z or LOC/DME Z RWY 24L

LOC I-PMY 110.1	APCH CRS 244°	Rwy Ldg 11,200 TDZE 607 Arprt Elev 617
---------------------------	-------------------------	--

AL-2147 [USAF]

ANDERSEN AFB (PGUA)

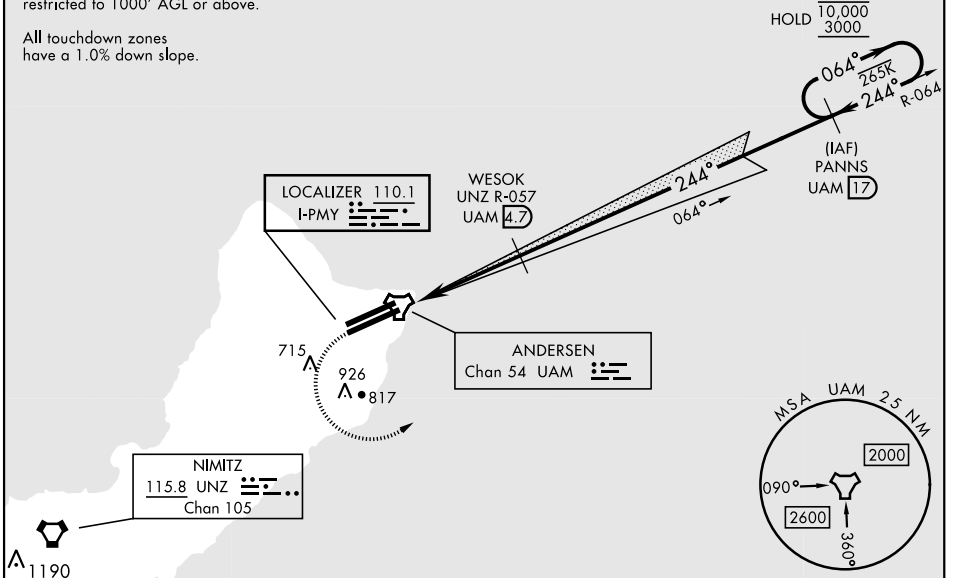
<p>▼ *When ALS inop, increase RVR to 45, vis to 1/8 mile. **When ALS inop, increase CAT AB RVR to 55, vis to 1 mile; CAT CDE RVR to 50, vis to 1 mile. *** Circling not authorized NW of Rwy 06L-24R.</p>	<p>SALS (A2)</p>	<p>MISSED APPROACH: Climb to 1200, then climbing left turn to 3000 to intercept UAM R-064 direct PANNS and hold.</p>
---	----------------------	--

ATIS 118.175 254.325	GUAM APP CON 119.8 269.0	TOWER 126.2 233.7	GND CON 121.7 275.8	CLNC DEL 126.725 256.7
--------------------------------	------------------------------------	-----------------------------	-------------------------------	----------------------------------

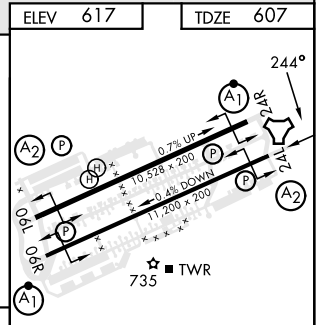
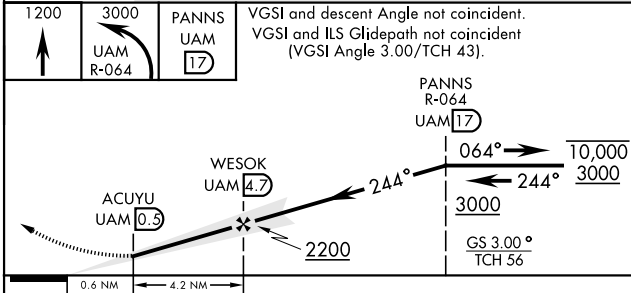
CAUTION: GS unusable below 900' MSL/300' AGL due to runway supervisory unit.

CAUTION: Environmentally Sensitive Area
Flights along Andersen cliffline restricted to 1000' AGL or above.

All touchdown zones have a 1.0% down slope.



EMERG SAFE ALT 100 NM 2900



ELEV 617	TDZE 607													
<table border="1"> <tr> <td>1200</td> <td>3000</td> <td>PANNS UAM 17</td> <td>VGSI and descent Angle not coincident. VGSI and ILS Glidepath not coincident (VGSI Angle 3.00/TCH 43).</td> </tr> <tr> <td>↑</td> <td>UAM R-064</td> <td></td> <td></td> </tr> </table>	1200	3000	PANNS UAM 17	VGSI and descent Angle not coincident. VGSI and ILS Glidepath not coincident (VGSI Angle 3.00/TCH 43).	↑	UAM R-064			<table border="1"> <tr> <td>ACUYU UAM 0.3</td> <td>WESOK UAM 4.7</td> <td>PANNS R-064 UAM 17</td> <td>10000 / 3000</td> <td>GS 3.00° TCH 56</td> </tr> </table>	ACUYU UAM 0.3	WESOK UAM 4.7	PANNS R-064 UAM 17	10000 / 3000	GS 3.00° TCH 56
1200	3000	PANNS UAM 17	VGSI and descent Angle not coincident. VGSI and ILS Glidepath not coincident (VGSI Angle 3.00/TCH 43).											
↑	UAM R-064													
ACUYU UAM 0.3	WESOK UAM 4.7	PANNS R-064 UAM 17	10000 / 3000	GS 3.00° TCH 56										
0.6 NM	4.2 NM													
CATEGORY	A	B	C	D	E									
S-ILS 24L*	900/40		293	(300-3/4)										
S-LOC 24L**	940/40	333 (400-3/4)	940/45	333 (400-7/8)										
CIRCLING***	1060-1	1080-1	1240-1 3/4	1240-2	1240-2 1/4									
	443 (500-1)	463 (500-1)	623 (700-1 3/4)	623 (700-2)	623 (700-2 1/4)									

HIRL all rwys

YIGO, GUAM I, GUAM

13° 35' N-144° 56' E

ANDERSEN AFB (PGUA)

Orig 12AUG21
TERPS

ILS Z or LOC/DME Z RWY 24L

PAC, 26 DEC 2024 to 20 FEB 2025

PAC, 26 DEC 2024 to 20 FEB 2025