

ILS Z or LOC/DME Z RWY 06R

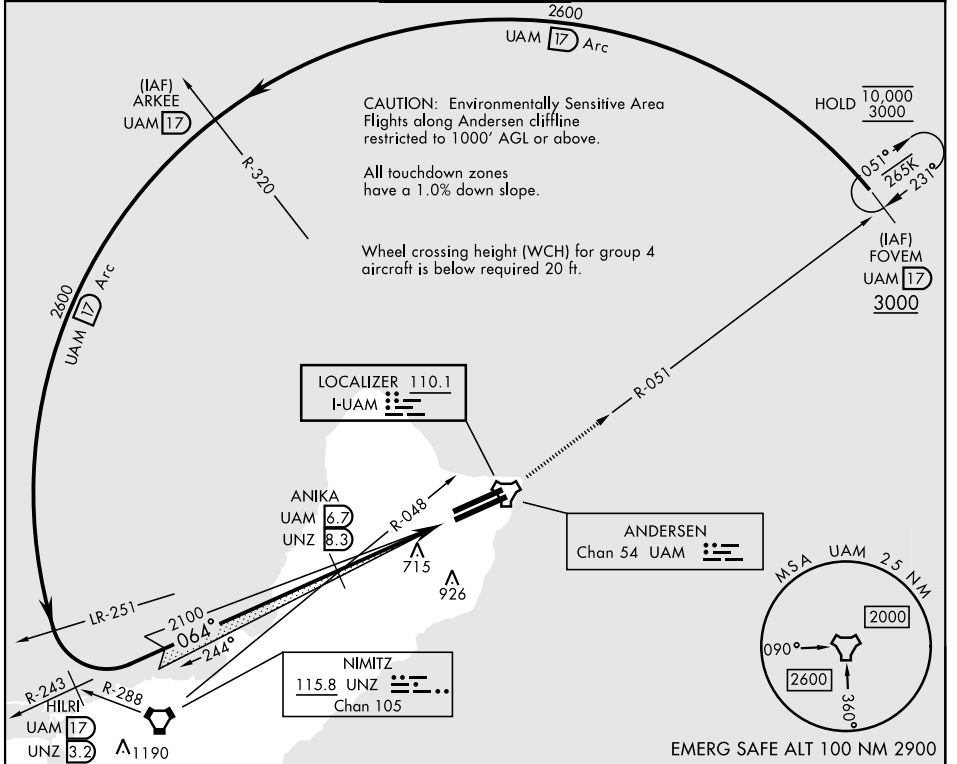
LOC I-UAM 110.1	APCH CRS 064°	Rwy Idg 11,200 TDZE 557 Arprt Elev 617
---------------------------	-------------------------	---

AL-2147 [USAF]

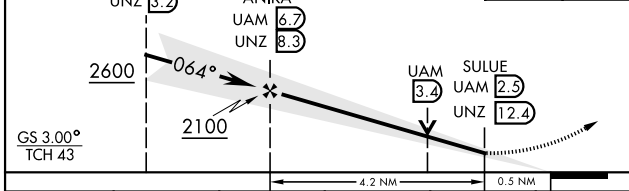
ANDERSEN AFB (PGUA)

<p>▼ * When ALS inop, increase RVR to 40, vis to ¾ mile. ** When ALS inop, increase CAT AB RVR to 55, vis to 1 mile, CAT CDE vis to 1 ½ miles. *** Circling not authorized NW of Rwy 06L-24R.</p>	<p>ALSIF-1 (A1)</p>	<p>MISSED APPROACH: Climb to 3000, intercept UAM R-051 to FOVEM and hold.</p>
---	--------------------------------	---

<p>ATIS 118.175 254.325</p>	<p>GUAM APP CON 119.8 269.0</p>	<p>TOWER 126.2 233.7</p>	<p>GND CON 121.7 275.8</p>	<p>CLNC DEL 126.725 256.7</p>
--	--	-------------------------------------	---------------------------------------	--



3000	FOVEM UAM 17	ELEV 617	TDZE 557
------	--------------	----------	----------



UAM R-051	FOVEM UAM 17	ELEV 617	TDZE 557
FAF to MAP 4.2 NM			
Knots	60	90	120 150 180
Min:Sec	4:12	2:48	2:06 1:41 1:24

CATEGORY	A	B	C	D	E
S-ILS 06R*		757/24	200	(200-½)	
S-LOC 06R**	1040/24	483 (500-½)	1040/50	483 (500-1)	
CIRCLING***	1060-1 443 (500-1)	1080-1 463 (500-1)	1240-1¾ 623 (700-1¾)	1240-2 623 (700-2)	1240-2¼ 623 (700-2¼)

ILS Z or LOC/DME Z RWY 06R

PAC, 26 DEC 2024 to 20 FEB 2025

PAC, 26 DEC 2024 to 20 FEB 2025