

YIGO, GUAM I, GUAM

TACAN Y RWY 06L

VORTAC UNZ 115.8 Chan 105	APCH CRS 053°	Rwy ldg TDZE Arprt Elev	10,528 539 617
---	-------------------------	-------------------------------	---

- (USAF)

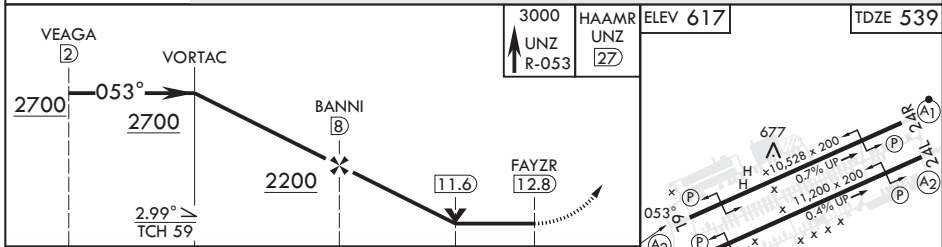
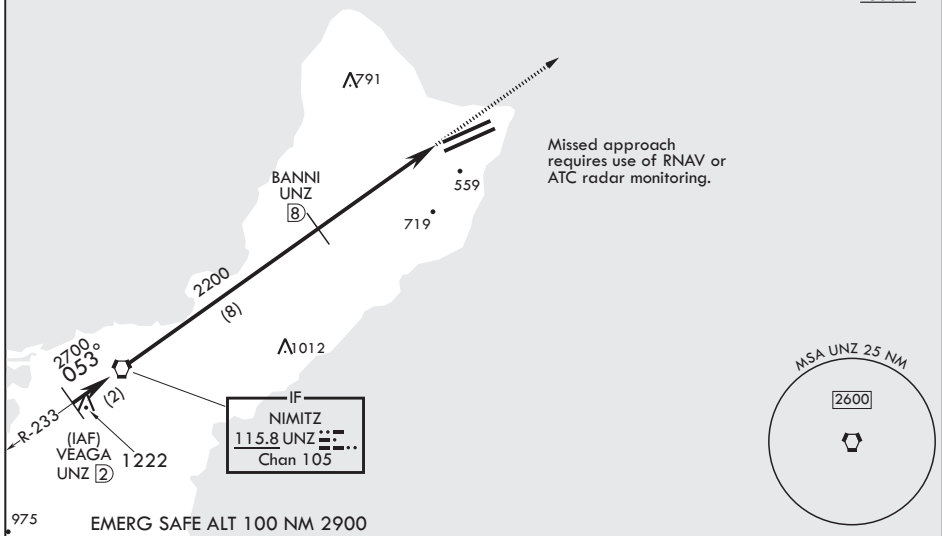
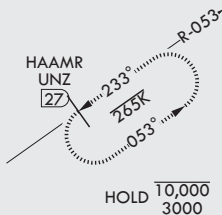
ANDERSEN AFB (PGUA)

RADAR or DME required	SALS	MISSED APPROACH: Climb to 3000, intercept UNZ R-053 to HAAMR and hold.
<p>▼ * When ALS inop, increase CAT AB RVR to 55 and vis to 1 mile, CAT CDE vis to 1 1/2 miles. ** Circling not authorized NW of Rwy 06L-24R.</p>		

ATIS 118.175 254.325	GUAM APP CON/DEP CON 119.8 269.0	TOWER 126.2 233.7	GND CON 121.7 275.8	CLNC DEL 126.725 256.7
--------------------------------	--	-----------------------------	-------------------------------	----------------------------------

CAUTION: Environmentally Sensitive Area Flights along Anderson cliff line restricted to 1000' AGL or above.

All touchdown zones have a 1.0% down slope.



CATEGORY	A	B	C	D	E
S-6L*	1060/40 521 (500-¾)		1060-1¼ 521 (500-1¼)		
☐ CIRCLING**	1060-1 443 (500-1)	1080-1 463 (500-1)	1240-1¾ 623 (700-1¾)	1240-2 623 (700-2)	1240-2¼ 623 (700-2¼)

HIRL all Rwys

PAC, 26 DEC 2024 to 20 FEB 2025

PAC, 26 DEC 2024 to 20 FEB 2025