

YIGO, GUAM I, GUAM

# TACAN Z RWY 24R


TACAN UAM Chan 54	APCH CRS 231°	Rwy Idg 10,528
		TDZE 617
		Arprt Elev 617

- (USAF)

ANDERSEN AFB (PGUA)

RADAR or DME required.

▼ \* When ALS inop, increase CAT AB RVR to 55, vis to 1 mile; CAT CDE RVR to 50, vis to 1 mile.  
\*\* Circling not authorized NW of Rwy 06L-24R.

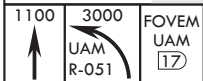
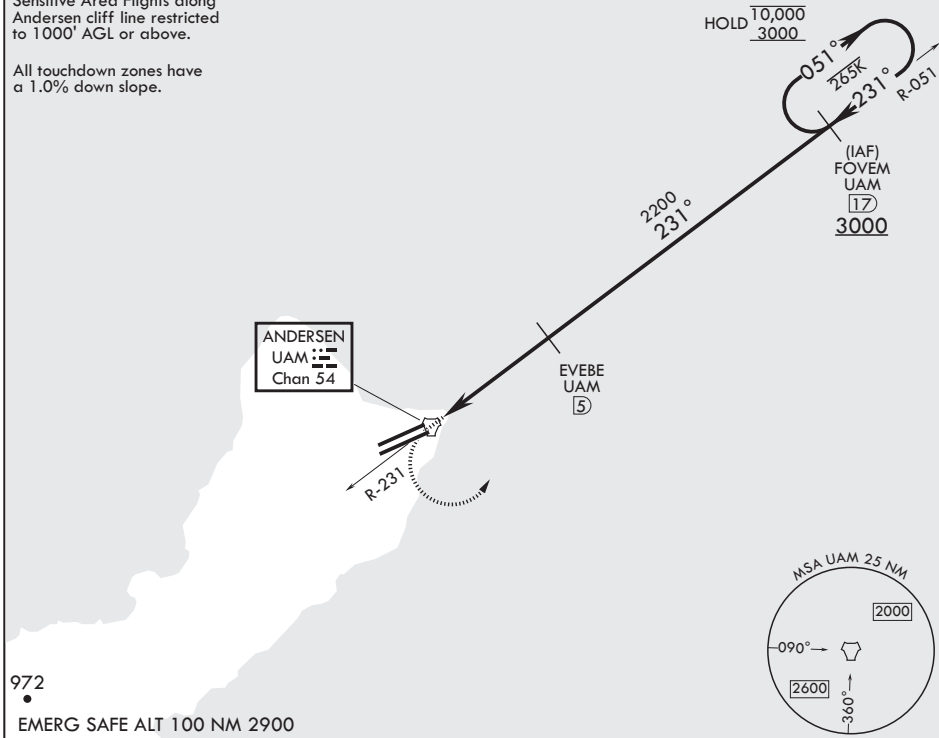
ALSF-1 

MISSED APPROACH: Climb to 1100, then climbing left turn to 3000 to intercept UAM R-051 and hold.

ATIS 118.175 254.325	GUAM APP CON/DEP CON 119.8 269.0	TOWER 126.2 233.7	GND CON 121.7 275.8	CLNC DEL 126.725 256.7
-------------------------	-------------------------------------	----------------------	------------------------	---------------------------

CAUTION: Environmentally Sensitive Area Flights along Andersen cliff line restricted to 1000' AGL or above.

All touchdown zones have a 1.0% down slope.

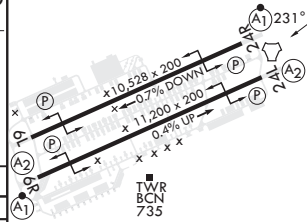
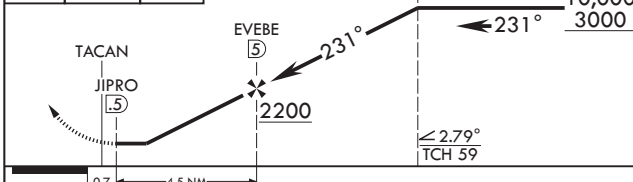


VGSI and ILS glidepath not coincident (VGSI angle 3.00/TCH 59).

FOVEM 17

051° → 10,000 / 3000

ELEV 617	TDZE 617
----------	----------



CATEGORY	A	B	C	D	E
S-24R*	940/24 323 (400-½)		940/40 323 (400-¾)		
CIRCLING**	1060-1 443 (500-1)	1080-1 463 (500-1)	1240-1¾ 623 (700-1¾)	1240-2 623 (700-2)	1240-2¼ 623 (700-2¼)

HIRL all Rwys

YIGO, GUAM I, GUAM

13°35'N - 144°56'E

ANDERSEN AFB (PGUA)

Amdt 2 17JUN21  
TERPS

# TACAN Z RWY 24R

PAC, 26 DEC 2024 to 20 FEB 2025

PAC, 26 DEC 2024 to 20 FEB 2025