

WAAS CH <b>53537</b> <b>W21A</b>	APP CRS <b>205°</b>	Rwy Idg TDZE Apt Elev	<b>5197</b> <b>935</b> <b>937</b>
--	------------------------	-----------------------------	---

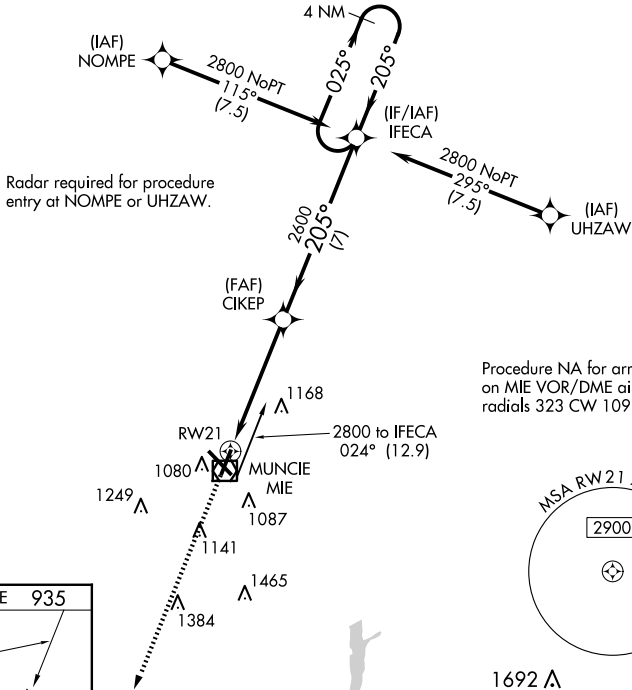
# RNAV (GPS) RWY 21

DELAWARE COUNTY RGNL (MIE)

**⚠** For uncompensated Baro-VNAV systems, LNAV/VNAV NA below -20°C (-4°F) or above 54°C (130°F). DME/DME RNP-0.3 NA. When local altimeter setting not received, use Fort Wayne Intl altimeter setting and increase all DA 121 feet and all MDA 140 feet; increase LPV all Cats and LNAV Cats C/D visibility 3/8 mile and LNAV/VNAV all Cats and Circling Cats C/D visibility 1/2 mile. Baro-VNAV and VDP NA when using Fort Wayne Intl altimeter setting. Helicopter visibility reduction below 3/4 SM NA.

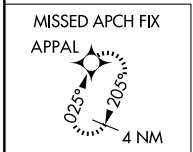
**MISSED APPROACH:**  
Climb to 2800 direct APPAL and hold.

ATIS <b>133.25</b>	INDIANAPOLIS APP CON <b>120.65 317.8</b>	MUNCIE TOWER ★ <b>120.1 (CTAF)</b> <b>0</b>	GND CON <b>121.9</b>	UNICOM <b>122.95</b>
-----------------------	---	--	-------------------------	-------------------------

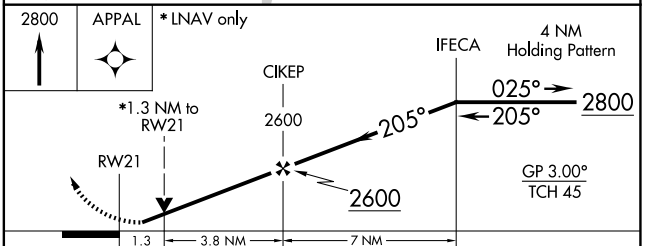
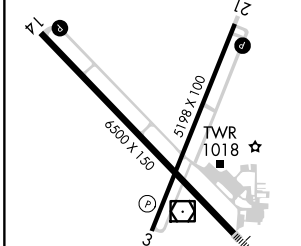


EC-2, 23 JAN 2025 to 20 FEB 2025

EC-2, 23 JAN 2025 to 20 FEB 2025



ELEV 937	<b>D</b>	TDZE 935
----------	----------	----------



CATEGORY	A	B	C	D
LPV DA		1195-7/8	260 (300-7/8)	
LNAV/VNAV DA		1351-13/8	416 (500-13/8)	
LNAV MDA	1400-1	465 (500-1)	1400-13/8 465 (500-13/8)	
<b>C</b> CIRCLING	1460-1	523 (600-1)	1500-11/2 563 (600-11/2)	1600-2 663 (700-2)

HIRL Rwy 14-32 **Ⓛ**  
MIRL Rwy 3-21 **Ⓛ**  
REIL Rwy 3, 14 and 21 **Ⓛ**