

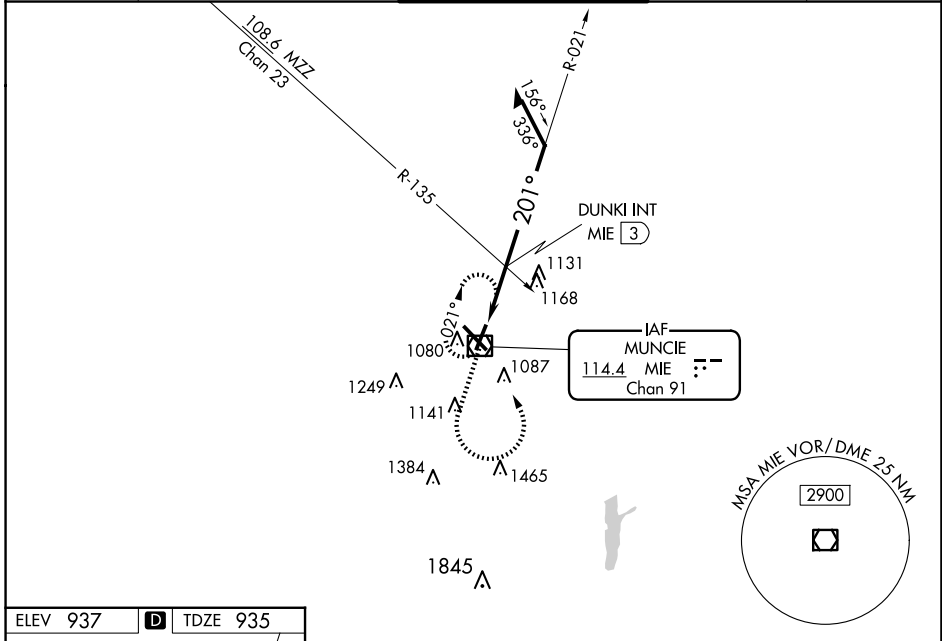
VOR/DME MIE 114.4 Chan 91	APP CRS 201°	Rwy Idg 5197 TDZE 935 Apt Elev 937
---	------------------------	---

VOR RWY 21
DELAWARE COUNTY RGNL (MIE)

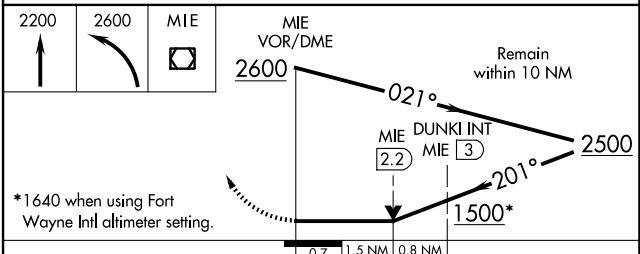
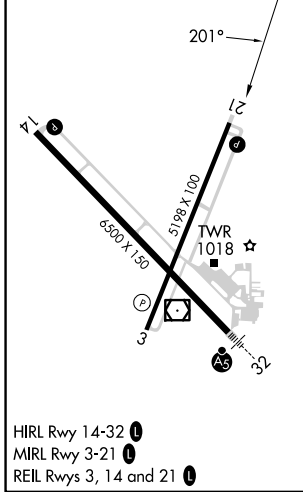
▼ Visibility reduction by helicopters NA. When local altimeter setting not received, use Fort Wayne Intl altimeter setting and increase all MDAs 140 feet; increase S-21 Cat C visibility ½ SM and Cat D visibility ¼ SM; increase Circling Cat C visibility ½ SM and Cat D ¼ SM; DUNKI fix minimums: increase S-21 Cat C/D ¾ SM and Circling visibility Cat C/D ½ SM. VDP NA when using Fort Wayne Intl altimeter setting.

▲ MISSED APPROACH: Climb to 2200 then climbing left turn to 2600 direct MIE VOR/DME and hold.

ATIS 133.25	INDIANAPOLIS APP CON 120.65 317.8	MUNCIE TOWER ★ 120.1 (CTAF) 0	GND CON 121.9	UNICOM 122.95
-----------------------	---	---	-------------------------	-------------------------



ELEV 937	D	TDZE 935
----------	----------	----------



CATEGORY	A		B		C		D	
	1500-1	565 (600-1)	1500-1½	565 (600-1½)	1500-1½	565 (600-1½)	1500-1¾	565 (600-1¾)
S-21	1500-1	565 (600-1)	1500-1½	565 (600-1½)	1500-1½	565 (600-1½)	1500-1¾	565 (600-1¾)
C CIRCLING	1500-1	563 (600-1)	1500-1½	563 (600-1½)	1500-1½	563 (600-1½)	1560-2	623 (700-2)
DUNKI FIX MINIMUMS (DUAL VOR RECEIVERS OR DME REQUIRED)								
S-21	1440-1	505 (600-1)	1440-1½	505 (600-1½)	1440-1½	505 (600-1½)	1560-2	623 (700-2)
C CIRCLING	1460-1	523 (600-1)	1480-1½	543 (600-1½)	1480-1½	543 (600-1½)	1560-2	623 (700-2)

EC-2, 23 JAN 2025 to 20 FEB 2025

EC-2, 23 JAN 2025 to 20 FEB 2025