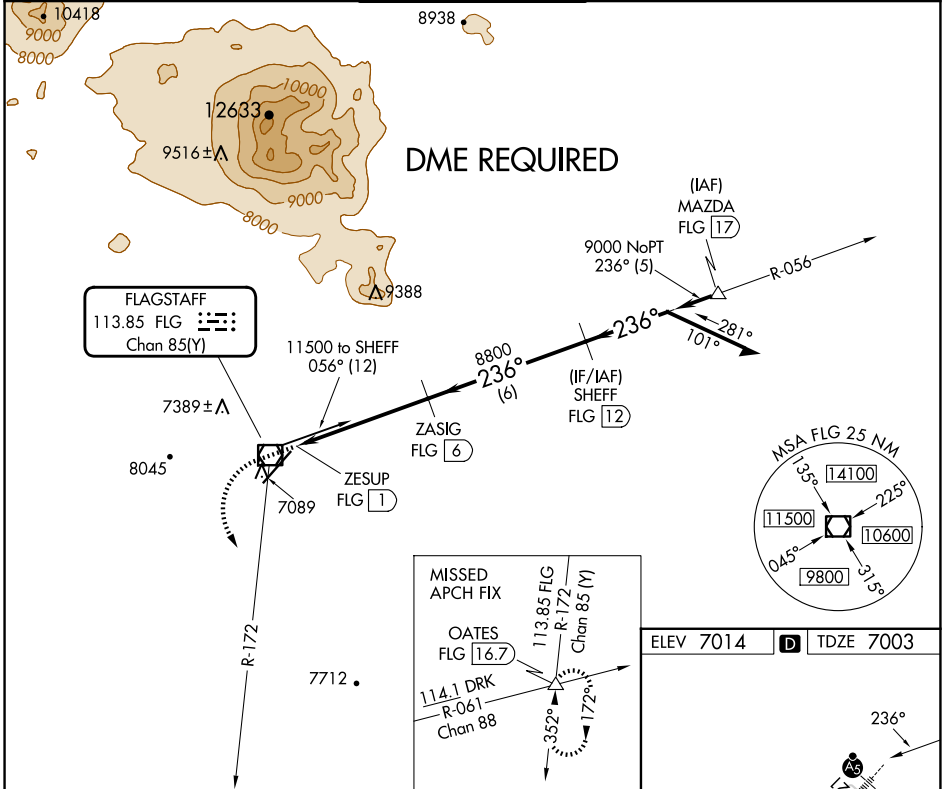


VOR/DME FLG 113.85 Chan 85(Y)	APP CRS 236°	Rwy Idg 7000 TDZE 7003 Apt Elev 7014
---	------------------------	---

VOR RWY 21

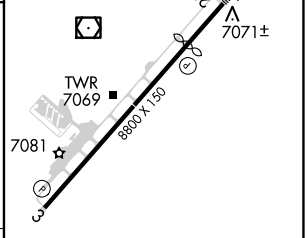
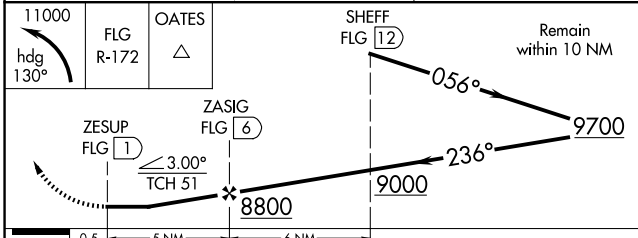
FLAGSTAFF PULLIAM (FLG)

	MALSR 		MISSED APPROACH: Climbing left turn to 11000 on heading 130° and FLG R-172 to OATES INT/16.7 DME, continue climb-in-hold.	
	ATIS 125.8	PHOENIX APP CON 126.375 236.775	FLAGSTAFF TOWER ★ 134.55 (CTAF) 239.25	GND CON 121.9



SW-4, 23 JAN 2025 to 20 FEB 2025

SW-4, 23 JAN 2025 to 20 FEB 2025



CATEGORY	A	B	C	D
S-21	7520-1 517 (600-1)			
CIRCLING	7520-1 506 (600-1)	7560-1 546 (600-1)	8100-3 1086 (1100-3)	8560-3 1546 (1600-3)

ELEV 7014	D	TDZE 7003
HIRL Rwy 3-21		