


LOC I-HUM	APP CRS	Rwy Idg	6413
108.5	179°	TDZE	8
		Apt Elev	9

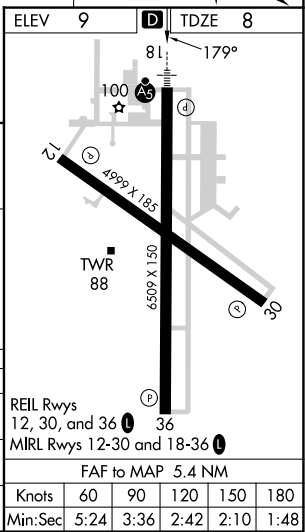
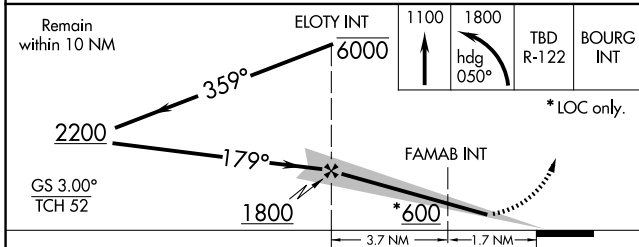
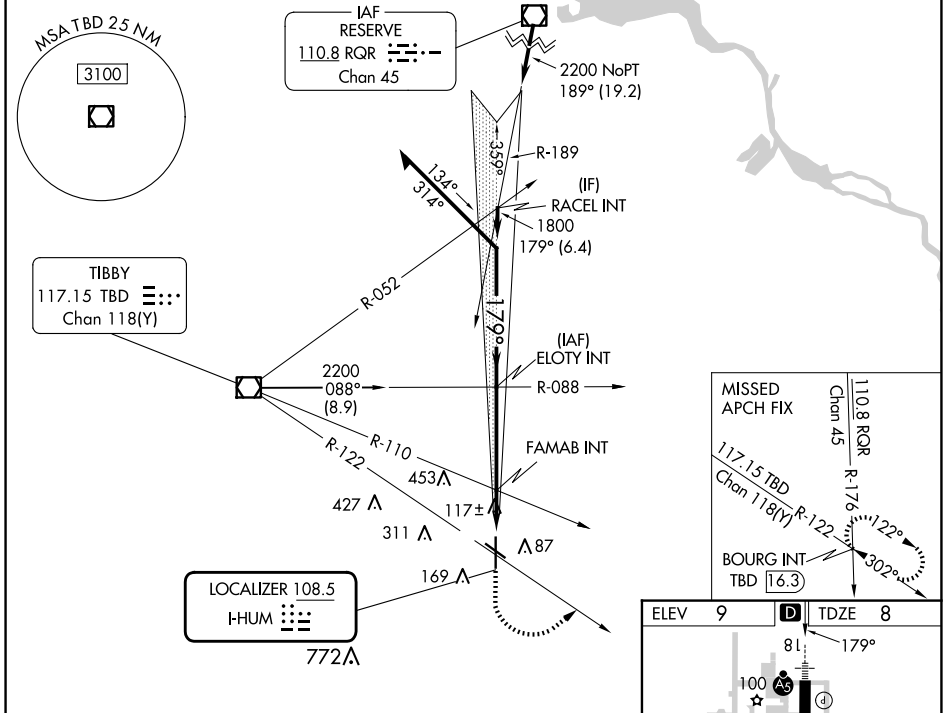
ILS or LOC RWY 18

HOUMA-TERREBONNE (HUM)

⚠ When local altimeter setting not received, use Louis Armstrong New Orleans Intl altimeter setting: increase DA to 285 feet; increase all MDA 80 feet and S-LOC 18 Cat C/D visibility ¼ SM and Circling Cat C/D visibility ¼ SM. For inop ALS increase S-LOC 18 Cat C/D visibility to 1 SM. For inop ALS when using Louis Armstrong New Orleans Intl altimeter setting increase S-ILS 18 all Cats visibility ⅓ SM.

MALSR

MISSED APPROACH: Climb to 1100 then climbing left turn to 1800 on heading 050° and TBD VOR/DME R-122 to BOURG INT/TBD 16.3 DME and hold.

ATIS 120.25	NEW ORLEANS APP CON 118.9 350.35	HOUMA TOWER ★ 125.3 (CTAF) 0 346.3	GND CON 123.875	CLNC DEL 118.9 (When twr closed)	UNICOM 122.95
-----------------------	--	--	---------------------------	---	-------------------------



CATEGORY	A	B	C	D
S-ILS 18	208-½ 200 (200-½)			
S-LOC 18	380-½ 372 (400-½)	380-⅝ 372 (400-⅝)		
C CIRCLING	480-1 471 (500-1)	760-2¼ 751 (800-2¼)		760-2½ 751 (800-2½)

REIL Rwys	12, 30, and 36	36			
MRL Rwys	12-30 and 18-36				
FAF to MAP 5.4 NM					
Knots	60	90	120	150	180
Min:Sec	5:24	3:36	2:42	2:10	1:48

SC-4, 23 JAN 2025 to 20 FEB 2025

SC-4, 23 JAN 2025 to 20 FEB 2025