

WAAS CH 97631 W34A	APP CRS 337°	Rwy Idg TDZE Apt Elev	5001 102 107
--	------------------------	-----------------------------	---

RNAV (GPS) RWY 34

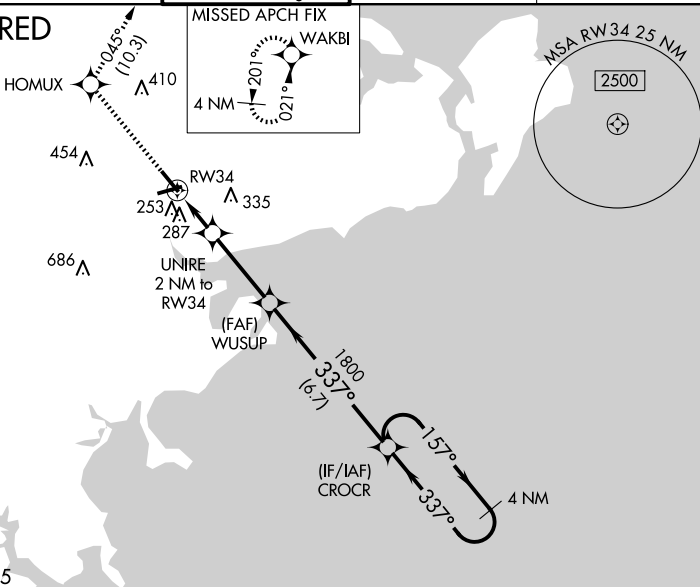
BEVERLY RGNL (BVY)

⚠ For uncompensated Baro-VNAV systems, LNAV/VNAV NA below -18°C (0°F) or above 54°C (130°F). Baro-VNAV and VDP NA when using Lawrence altimeter setting.
⚠ DME/DME RNP-0.3 NA. When local altimeter setting not received, use Lawrence altimeter setting: increase LPV DA to 416 and LNAV/VNAV DA to 502 and all MDA 40 feet; increase LPV all Cats visibility and LNAV/VNAV all Cats visibility and LNAV Cats C and D visibility 1/8 SM and Circling Cats C and D visibility 1/4 SM. Circling Rwy 9 NA at night. Rwy 34 helicopter visibility reduction below 3/4 SM NA. Rwy 9 helicopter visibility reduction below 1 SM NA.

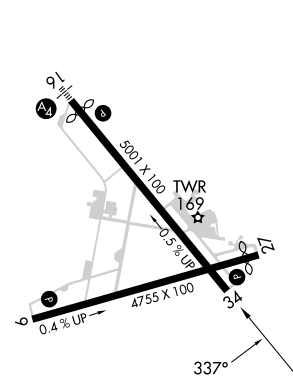
MISSED APPROACH:
 Climb to 2000 direct
 HOMUX and on track
 045° to WAKBI and hold.

ATIS 119.2	BOSTON APP CON 124.4 279.6	BEVERLY TOWER* 125.2 (CTAF)	GND CON 121.6	UNICOM 122.95
----------------------	--------------------------------------	---------------------------------------	-------------------------	-------------------------

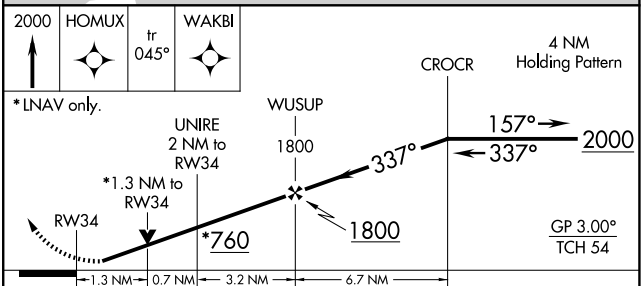
RADAR REQUIRED



ELEV 107	TDZE 102
----------	----------



REIL Rwy 34
 MIRL Rwy 9-27 and 16-34



CATEGORY	A	B	C	D
LPV DA	382-1 280 (300-1)			
LNAV/VNAV DA	468-1 1/4 366 (400-1 1/4)			
LNAV MDA	540-1	438 (500-1)	540-1 1/4	438 (500-1 1/4)
CIRCLING	600-1	493 (500-1)	820-2 713 (800-2)	880-2 1/2 773 (800-2 1/2)

NE-1, 23 JAN 2025 to 20 FEB 2025

NE-1, 23 JAN 2025 to 20 FEB 2025