

LOC/DME I-TXN 111.55 Chan 52 (Y)	APP CRS 021°	Rwy Idg 8000 TDZE 867 Apt Elev 871
--	------------------------	---

ILS or LOC RWY 2

CENTRAL IL RGNL/BLOOMINGTON-NORMAL (BMI)

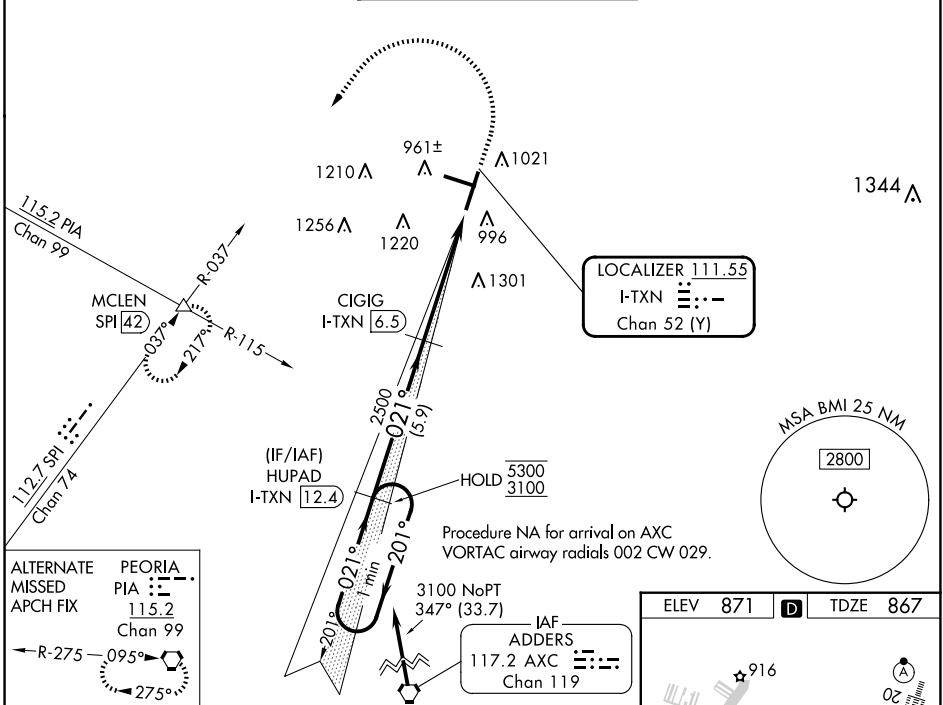
DME required for LOC only.

⚠ Autopilot coupled approach NA below 1100. VDP NA when using PIA altimeter setting. Inop table does not apply to S-ILS 2. For inop ALS, increase S-LOC 2 Cats C and D visibility to RVR 6000. When local altimeter setting not received, use PIA altimeter setting: increase S-ILS 2 DA to 1183 feet; increase all MDAs 120 feet and Circling visibility Cats C and D 1/4 SM. For inop ALS when using PIA altimeter setting, increase S-LOC 2 Cats C and D visibility to 1 3/8 SM.



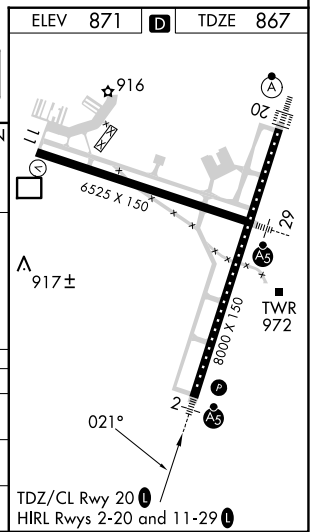
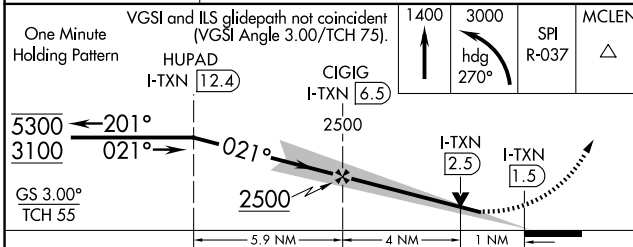
MISSED APPROACH:
Climb to 1400 then climbing left turn to 3000 on heading 270° and SPI VORTAC R-037 to MCLN INT/SPI 42 DME and hold.

ATIS 119.575	SAINT LOUIS APP CON 128.725 256.9	BLOOMINGTON TOWER ★ 124.6 (CTAF) 269.575	GND CON 121.65	UNICOM 122.95
------------------------	---	--	--------------------------	-------------------------



ALTERNATE MISSED APCH FIX

PEORIA PIA	115.2
Chan	99
R-275	095°
	275°



CATEGORY	A	B	C	D
S-ILS 2		1067/40	200 (200-3/4)	
S-LOC 2		1260/40	393 (400-3/4)	
C CIRCLING	1340-1	469 (500-1)	1620-2 1/4 749 (800-2 1/4)	1620-2 1/2 749 (800-2 1/2)

TDZ/Cl Rwy 20, HIRL Rwy 2-20 and 11-29

ILS or LOC RWY 2

EC-3, 23 JAN 2025 to 20 FEB 2025

EC-3, 23 JAN 2025 to 20 FEB 2025