


LOC/DME I-BMI 110.95 Chan 46 (Y)	APP CRS 291°	Rwy Idg TDZE Apt Elev	6525 871 871
--	------------------------	-----------------------------	---

ILS or LOC RWY 29

CENTRAL IL RGNL/BLOOMINGTON-NORMAL (BMI)

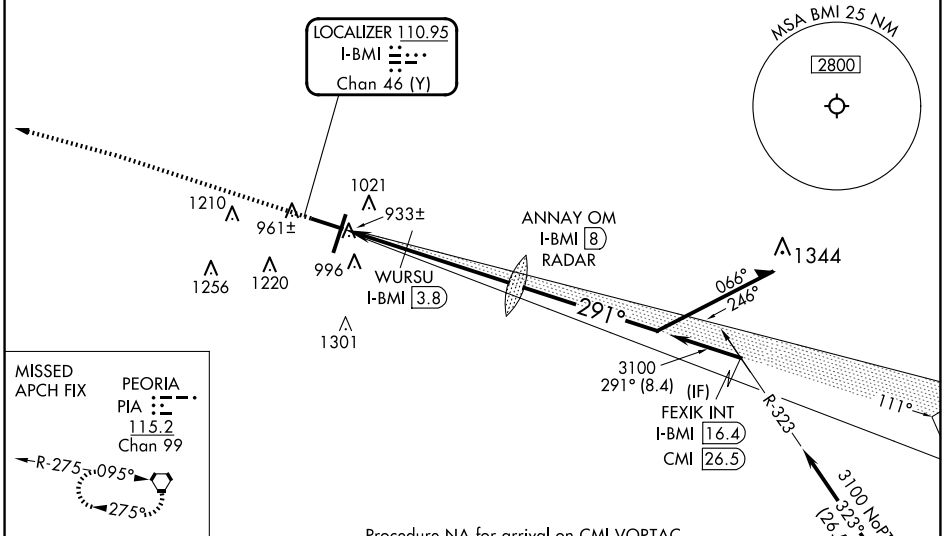
DME required. RADAR required for procedure entry at ANNAY OM.

⚠ VDP NA when using PIA altimeter setting. For inop ALS, increase S-LOC 29 Cats C and D visibility to RVR 5500. When local altimeter setting not received, use PIA altimeter setting; increase S-ILS 29 DA to 1187 feet; increase all MDAs 120 feet and S-LOC 29 visibility Cats C and D to RVR 5000 and Circling visibility Cats C and D 1/2 SM. For inop ALS when using PIA altimeter setting; increase S-ILS 29 visibility all Cats to RVR 4500 and S-LOC 29 visibility Cats C and D to 1 3/8 SM. * RVR 1800 authorized with use of FD or AP or HUD to DA (NA when using PIA altimeter setting).

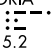
MALSR 

MISSED APPROACH: Climb to 1500 then climbing left turn to 3000 direct PIA VORTAC and hold.

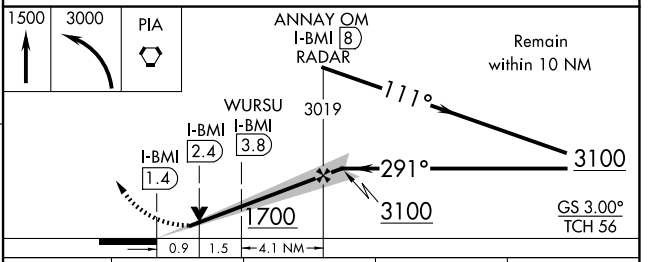
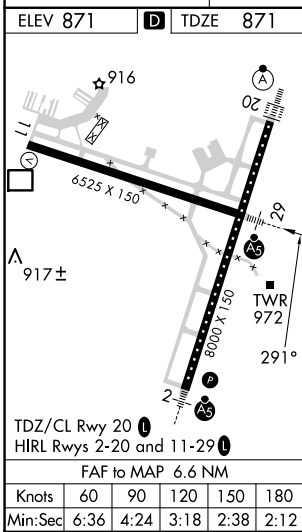
ATIS 119.575	SAINT LOUIS APP CON 128.725 256.9	BLOOMINGTON TOWER * 124.6 (CTAF) 0 269.575	GND CON 121.65	UNICOM 122.95
------------------------	---	--	--------------------------	-------------------------



MISSED APCH FIX

PEORIA
PIA 
115.2
Chan 99

R-275 275° 095°



CATEGORY	A	B	C	D
S-ILS 29 *	1071/24 200 (200-1/2)			
S-LOC 29	1240/24	369 (400-1/2)	1240/35	369 (400-5/8)
C CIRCLING	1340-1	469 (500-1)	1620-2 1/4 749 (800-2/4)	1620-2 1/2 749 (800-2/2)

ILS or LOC RWY 29

EC-3, 23 JAN 2025 to 20 FEB 2025

EC-3, 23 JAN 2025 to 20 FEB 2025