

HYPER NINE ARRIVAL (RNAV) Arrival Routes

WASHINGTON, DC

POTOMAC APP CON
 133.0 288.35
 IAD D-ATIS
 134.85
 HEF ATIS
 125.175
 KNYG ATIS
 263.15

RNAV 1 - DME/DME/IRU or GPS

RADAR required

Ldg KNYG/KCJR/KEZF/KRMN/KHWY/
 KHFE/KMRB/KJYO/KFRR/KOKV
 KIAD Ldg Rwys 19L/C/R

NOTE: Jet and turboprop aircraft only.
 NOTE: For aircraft capable of 180K or greater.

EASTERN WV RGNL/
 SHEPHERD FLD

WINCHESTER RGNL

KIAD Ldg Rwys 1L, 30

FRONT ROYAL-WARREN COUNTY

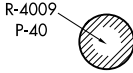
WARRENTON/FAUQUIER

CULPEPER RGNL

SHANNON

STAFFORD RGNL

QUANTICO MCAF (TURNER FLD)



CRAIN 6000

KUKSE

ELISN

MANASSAS RGNL/
 HARRY P DAVIS FLD

LEESBURG EXEC

WASHINGTON DULLES INTL

PHATT 9000

HYPER
 10000 250K

SIGBE 7000

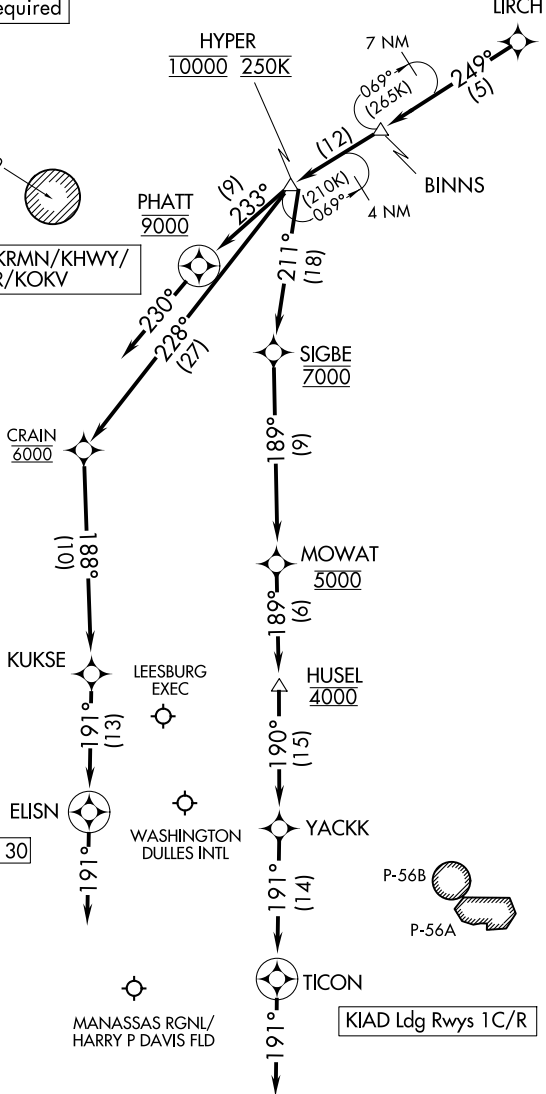
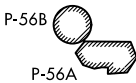
MOWAT 5000

HUSEL 4000

YACKK

TICON

KIAD Ldg Rwys 1C/R



(CONTINUED ON FOLLOWING PAGE)

NOTE: Chart not to scale.

NE-3, 23 JAN 2025 to 20 FEB 2025

NE-3, 23 JAN 2025 to 20 FEB 2025