

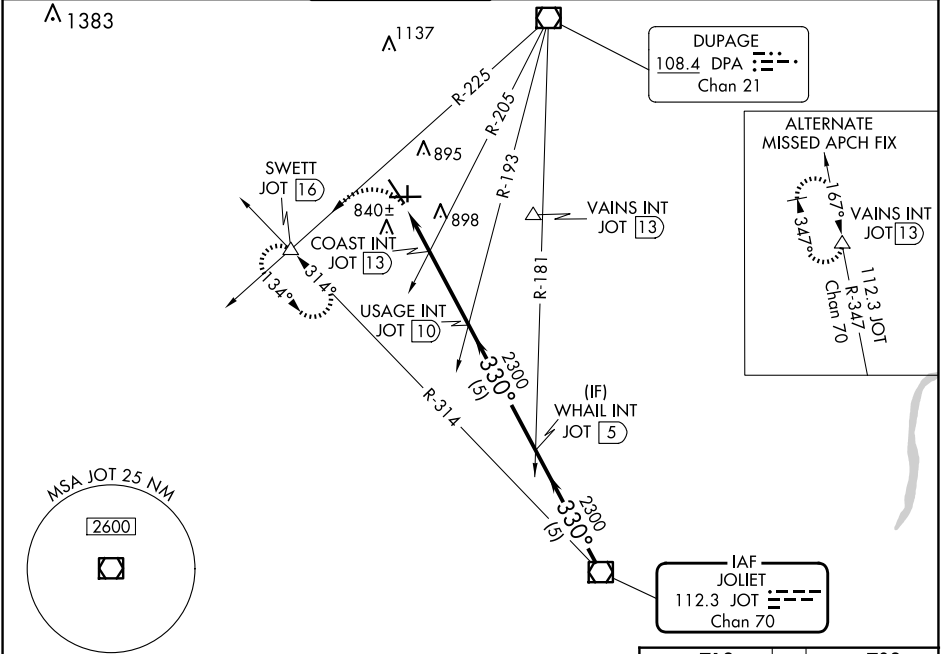
VOR/DME JOT <b>112.3</b> Chan <b>70</b>	APP CRS <b>330°</b>	Rwy Idg <b>3198</b> TDZE <b>703</b> Apt Elev <b>712</b>
---	------------------------	---

# VOR RWY 36

AURORA MUNI (A.R.R.)

**MISSED APPROACH:** Climbing left turn to 3000 on DPA VOR/DME R-225 to SWETT INT/16 DME and hold.

ATIS <b>125.85</b>	CHICAGO APP CON <b>133.5 349.0</b>	AURORA TOWER* <b>120.6 (CTAF) 0</b>	GND CON <b>121.7</b>	CLNC DEL <b>121.7</b> (When tower closed)	UNICOM <b>122.95 123.5</b>
-----------------------	---------------------------------------	--	-------------------------	---	-------------------------------



3000	SWETT △	USAGE INT JOT 10	WHAIL INT JOT 5	JOT VOR/DME
DPA R-225				
1.3	0.7	3 NM	5 NM	5 NM
<p>COAST INT JOT 13</p> <p>JOT 13.7</p> <p>JOT 15</p> <p>1360</p> <p>2.96° TCH 45</p> <p>2300</p> <p>330°</p> <p>2300</p> <p>3300</p>				
CATEGORY	A	B	C	D
S-36	1360-1 657 (700-1)		1360-1 <sup>3</sup> / <sub>4</sub> 657 (700-1 <sup>3</sup> / <sub>4</sub> )	1360-2 657 (700-2)
<b>C</b> CIRCLING	1360-1 648 (700-1)		1360-1 <sup>3</sup> / <sub>4</sub> 648 (700-1 <sup>3</sup> / <sub>4</sub> )	1360-2 648 (700-2)
COAST FIX MINIMUMS (DUAL VOR RECEIVERS or DME REQUIRED)				
S-36	1160-1 457 (500-1)		1160-1 <sup>1</sup> / <sub>2</sub> 457 (500-1 <sup>1</sup> / <sub>2</sub> )	1160-1 <sup>1</sup> / <sub>2</sub> 457 (500-1 <sup>1</sup> / <sub>2</sub> )
<b>C</b> CIRCLING	1200-1 488 (500-1)		1300-1 <sup>1</sup> / <sub>2</sub> 588 (600-1 <sup>1</sup> / <sub>2</sub> )	1320-2 608 (700-2)

ELEV 712 | TDZE 703

MIRL Rwy 18-36 **0**  
HIRL Rwy 15-33 and 9-27 **0**  
REIL Rwy 15, 18, 27, and 36 **0**

FAF to MAP 5 NM

Knots	60	90	120	150	180
Min:Sec	5:00	3:20	2:30	2:00	1:40

EC-3, 23 JAN 2025 to 20 FEB 2025

EC-3, 23 JAN 2025 to 20 FEB 2025