

|  |                        |   |   |
|--|------------------------|---|---|
| WAAS<br>CH <b>56301</b><br><b>W02A</b> | APP CRS<br><b>022°</b> | Rwy Idg<br>TDZE <b>623</b><br>Apt Elev <b>623</b> | <b>5003</b><br><b>623</b><br><b>623</b> |
|--|------------------------|---|---|

# RNAV (GPS) RWY 2

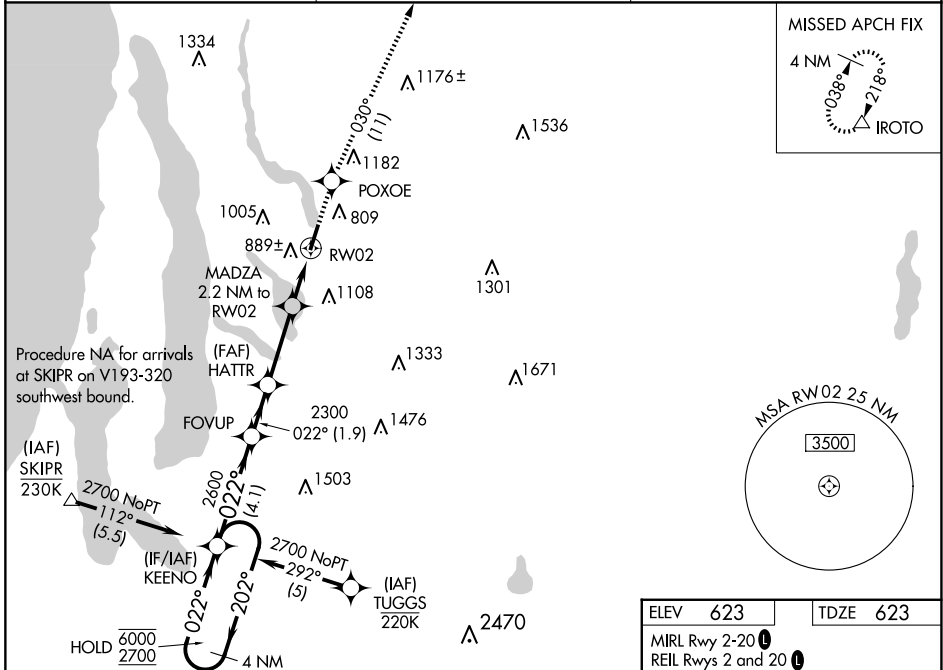
ANTRIM COUNTY (ACB)

RNP APCH-GPS.

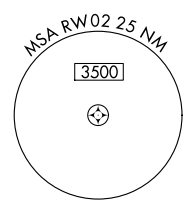
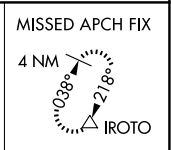
**▼** Rwy 2 helicopter visibility reduction below  $\frac{3}{4}$  SM NA. For uncompensated Baro-VNAV systems, LNAV/VNAV NA below -16°C or above 54°C. Baro-VNAV and VDP NA when using TVC altimeter setting. When local altimeter setting not received, use TVC altimeter setting: increase LPV DA to 954 feet and all visibilities  $\frac{1}{8}$  SM; increase LNAV/VNAV DA to 1187 feet and all visibilities  $\frac{1}{4}$  SM; increase all MDAs 60 feet and LNAV visibility Cats C and D  $\frac{1}{4}$  SM, and Circling visibility Cats B and C  $\frac{1}{4}$  SM.

**MISSED APPROACH:** Climb to 3000 direct POXOE and on track 030° to IROTO and hold.

|                           |  |                                 |
|---------------------------|--|---------------------------------|
| AWOS-3P<br><b>119.275</b> | MINNEAPOLIS CENTER<br><b>132.9 338.3</b> | UNICOM<br><b>122.7 (CTAF) 0</b> |
|---------------------------|--|---------------------------------|

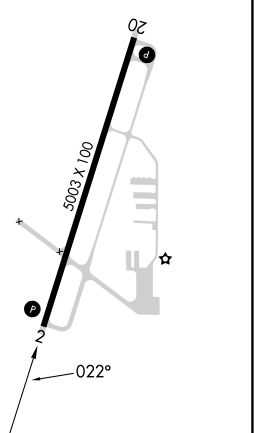


Procedure NA for arrivals at SKIPR on V193-320 southwest bound.



|                     |          |
|---------------------|----------|
| ELEV 623            | TDZE 623 |
| MIRL Rwy 2-20 0     |          |
| REIL Rws 2 and 20 0 |          |

|                      |                       |                       |   |                            |                |        |       |         |        |
|----------------------|-----------------------|-----------------------|---|----------------------------|----------------|--------|-------|---------|--------|
| 4 NM Holding Pattern | KEENO                 | FOVUP                 | HATTR   | MADZA 2.2 NM to RW02       | 1.5 NM to RW02 | 3000   | POXOE | IROTO   |        |
|                      |                       |                       |   |                            |                | ↑      | ✦     | tr 030° | △      |
| 6000                 | ← 202°                | → 022°                | 022°  | 2600                       | 2300           | 1360   |       |         |        |
| GP 3.00°             | TCH 45                |                       |   |                            | 4.1 NM         | 1.9 NM | 3 NM  | 0.7 NM  | 1.5 NM |
| CATEGORY             | A                     | B                     | C   | D                          |                |        |       |         |        |
| LPV DA               |                       | 902-1                 | 279 (300-1)   |                            |                |        |       |         |        |
| LNAV/VNAV DA         |                       | 1135-1 $\frac{3}{8}$  | 512 (600-1 $\frac{1}{8}$ )                          |                            |                |        |       |         |        |
| LNAV MDA             | 1140-1                | 517 (600-1)           | 1140-1 $\frac{3}{8}$                                | 517 (600-1 $\frac{1}{8}$ ) |                |        |       |         |        |
| CIRCLING             | 1360-1<br>737 (800-1) | 1380-1<br>757 (800-1) | 1560-2 $\frac{3}{4}$<br>937 (1000-2 $\frac{3}{4}$ ) | 1640-3<br>1017 (1100-3)    |                |        |       |         |        |



EC-1, 23 JAN 2025 to 20 FEB 2025

EC-1, 23 JAN 2025 to 20 FEB 2025