

LOC I-JAN 110.5	APP CRS 159°	Rwy Idg 8500
		TDZE 312
		Apt Elev 346

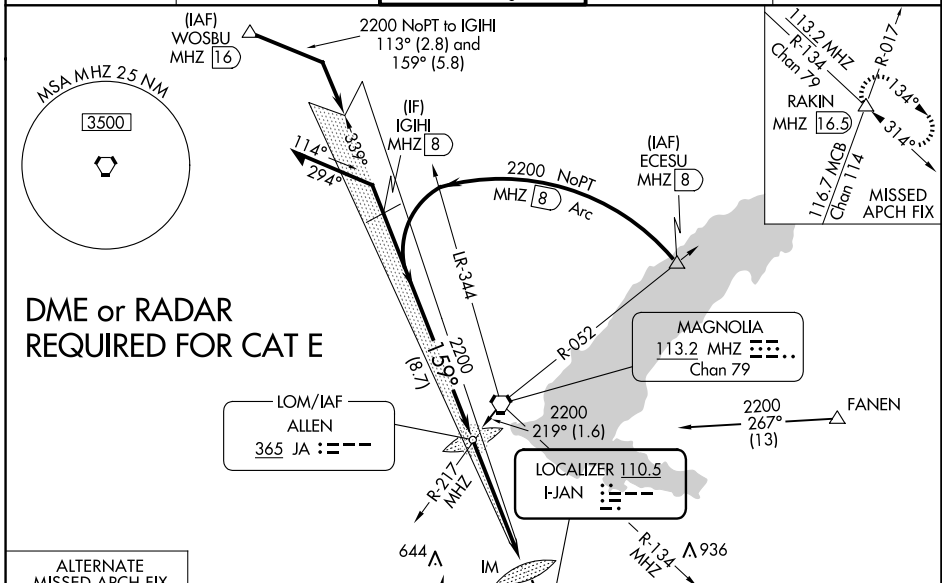
ILS or LOC RWY 16L

JACKSON-MEDGAR WILEY EVERS INTL (JAN)

ASR Circling NA for Cat E southwest of Rwy 16R-34L. When local altimeter setting not received, use Hawkins Fld altimeter setting and increase all DA 19 feet and all MDA 20 feet. For inop ALS, increase S-ILS 16L Cat E visibility to RVR 4000 and increase S-LOC 16L Cats C/D/E visibility to 1 3/8 SM. For inop ALS when using Hawkins Fld altimeter setting, increase S-ILS 16L Cat E visibility to RVR 4000 and increase S-LOC 16L Cats C/D/E visibility to 1 1/2 SM. Procedure turn NA for Cat E.

ALSF-2
MISSED APPROACH: Climb to 800 then climbing left turn to 3000 on heading 090° and MHZ VORTAC R-134 to RAKIN INT/16.5 DME and hold.

ATIS 121.05	JACKSON APP CON * 123.9 317.7	JACKSON TOWER * 120.9 (CTAF) 352.0	GND CON 121.7 348.6	UNICOM 122.95
-----------------------	---	--	-------------------------------	-------------------------



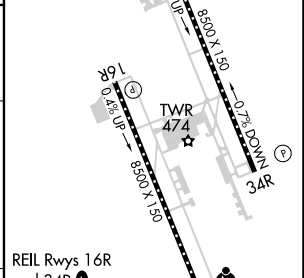
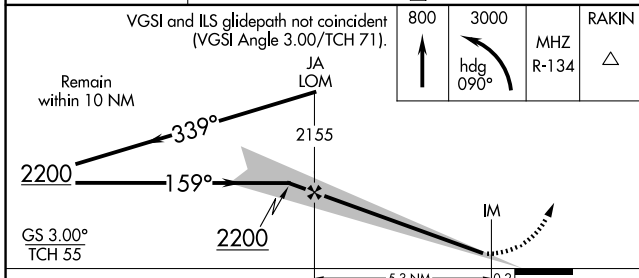
DME or RADAR REQUIRED FOR CAT E

SC-4, 23 JAN 2025 to 20 FEB 2025

SC-4, 23 JAN 2025 to 20 FEB 2025



ELEV	346	TDZE	312
------	-----	------	-----



VGSI and ILS glidepath not coincident (VGSI Angle 3.00/TCH 71).	800	3000	MHZ	RAKIN	
Remain within 10 NM	JA	LOM	R-134	△	
GS 3.00° TCH 55	2200	2155			
CATEGORY	A	B	C	D	E
S-ILS 16L	512/18 200 (200-1/2)				
S-LOC 16L	820/24	508 (500-1/2)	820/55	508 (500-1)	
CIRCLING	880-1	900-1	900-1 1/2	960-2	1040-2 1/2
	534 (600-1)	554 (600-1)	554 (600-1 1/2)	614 (700-2)	694 (700-2 1/2)

REIL Rwy 16R and 34R	1				
HIRL Rwy 16L-34R and 16R-34L	1				
FAF to MAP	5.5 NM				
Knots	60	90	120	150	180
Min:Sec	5:30	3:40	2:45	2:12	1:50