

WAAS CH 72911 W16A	APP CRS 159°	Rwy Idg 8500 TDZE 312 Apt Elev 346
--	------------------------	---

RNAV (GPS) RWY 16L

JACKSON-MEDGAR WILEY EVERS INTL (JAN)

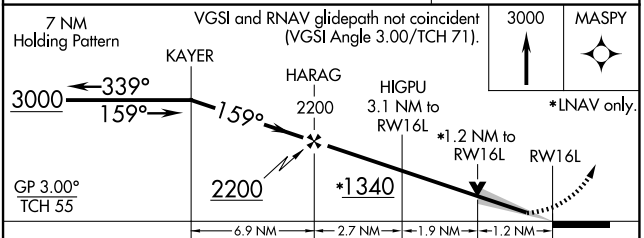
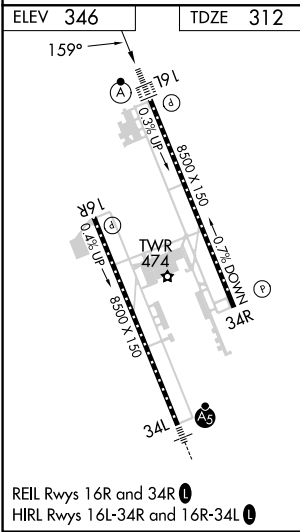
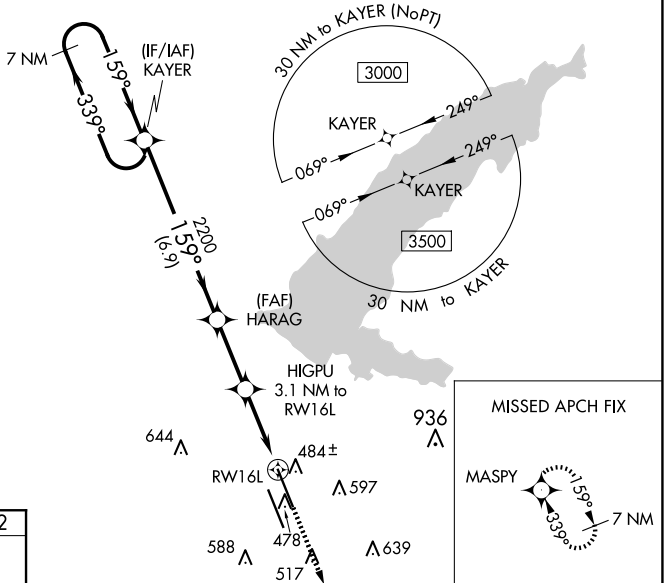
RNP APCH.

▼ For uncompensated Baro-VNAV systems, LNAV/VNAV NA below -7°C or above 54°C.
 ▲ Circling NA for Cat E southwest of Rwy 16R-34L. When local altimeter setting not received, use Hawkins Fld altimeter setting and increase all DA 19 feet and all MDA 20 feet, increase ASR LNAV/VNAV all Cats visibility to RVR 3400 and LNAV Cats C/D/E visibility to RVR 5000. VDP and Baro-VNAV NA when using Hawkins Fld altimeter setting. For inop ALS, increase LPV Cat E visibility to RVR 4000, LNAV/VNAV Cat E visibility to RVR 5500, and LNAV Cat E visibility to 1 3/8 SM. For inop ALS when using Hawkins Fld altimeter setting, increase LPV Cat E visibility to RVR 4000, LNAV/VNAV Cat E visibility to RVR 6000, and LNAV Cat E visibility to 1 3/8 SM.



MISSED APPROACH:
Climb to 3000 direct MASPY and hold.

ATIS 121.05	JACKSON APP CON * 123.9 317.7	JACKSON TOWER * 120.9 (CTAF) 0 352.0	GND CON 121.7 348.6	UNICOM 122.95
-----------------------	---	--	-------------------------------	-------------------------



CATEGORY	A	B	C	D	E
LPV DA	512/18 200 (200-1/2)				
LNAV/VNAV DA	652/31 340 (400-5/8)				
LNAV MDA	760/24 448 (500-1/2)		760/45 448 (500-7/8)		
CIRCLING	880-1	900-1	900-1 1/2	960-2	1040-2 1/2
	534 (600-1)	554 (600-1)	554 (600-1 1/2)	614 (700-2)	694 (700-2 1/2)

SC-4, 23 JAN 2025 to 20 FEB 2025

SC-4, 23 JAN 2025 to 20 FEB 2025