

WAAS CH <b>82625</b> <b>W18A</b>	APP CRS <b>177°</b>	Rwy Idg TDZE Apt Elev	<b>5904</b> <b>3125</b> <b>3125</b>
--	------------------------	-----------------------------	---

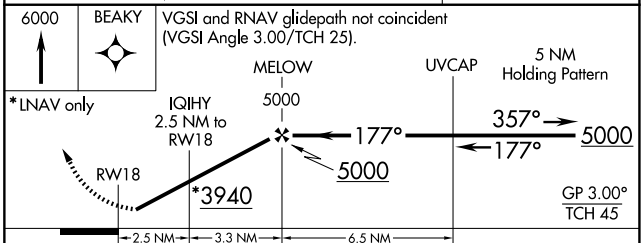
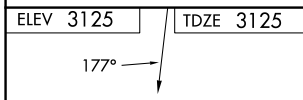
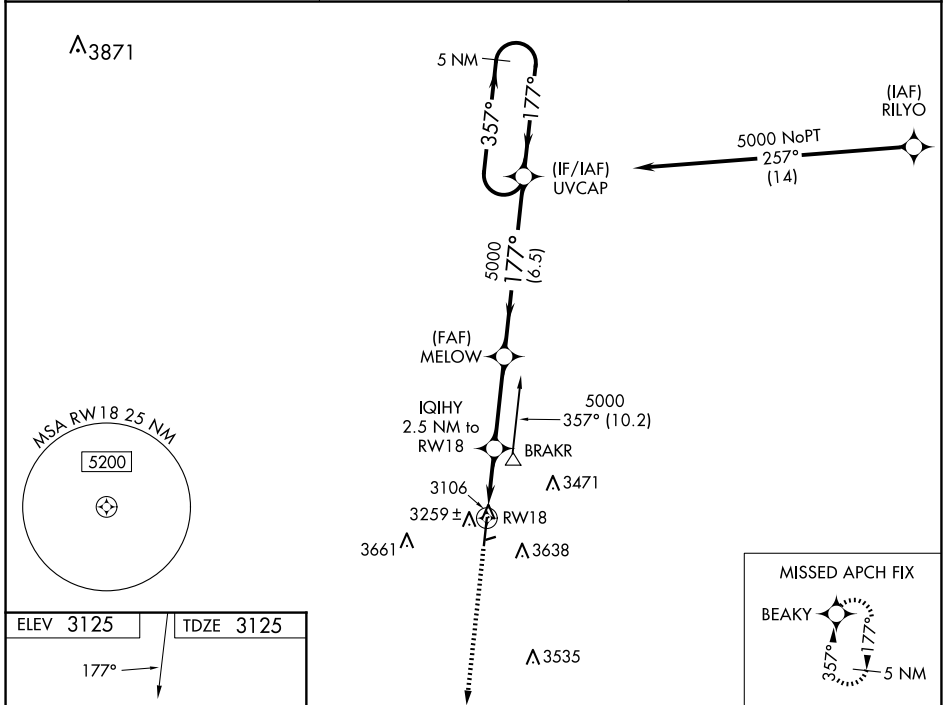
# RNAV (GPS) RWY 18

GUYMON MUNI (GUY)

**⚠** Baro-VNAV NA when using Liberal altimeter setting. For uncompensated Baro-VNAV systems, LNAV/VNAV NA below -21°C (-5°F) or above 54°C (130°F). Circling NA east of Rwy 18-36. DME/DME RNP-0.3 NA. When local altimeter setting not received, use Liberal altimeter setting: increase LPV DA to 3488 feet; increase LNAV/VNAV DA to 3564 feet and all visibilities ½ SM; increase all MDAs 120 feet and visibility Cat C ½ SM. Circling NA to Rwy 6 and 24.

**ODALS**  
 MISSED APPROACH: Climb to 6000 direct BEAKY and hold.

ASOS <b>119.925</b>	KANSAS CITY CENTER <b>134.0 257.625</b>	UNICOM <b>122.7 (CTAF) 0</b>
------------------------	--	---------------------------------



CATEGORY	A	B	C	D
LPV DA		3375-1 250 (300-1)		NA
LNAV/VNAV DA		3451-1 326 (400-1)		NA
LNAV MDA		3520-1 395 (400-1)		NA
CIRCLING	3580-1 455 (500-1)		3980-2½ 855 (900-2½)	NA

SC-1, 23 JAN 2025 to 20 FEB 2025

SC-1, 23 JAN 2025 to 20 FEB 2025