

WAAS CH 50525 W36A	APP CRS 357°	Rwy Idg TDZE 3125 Apt Elev 3125	5904 3125 3125
--	------------------------	---	---

RNAV (GPS) RWY 36

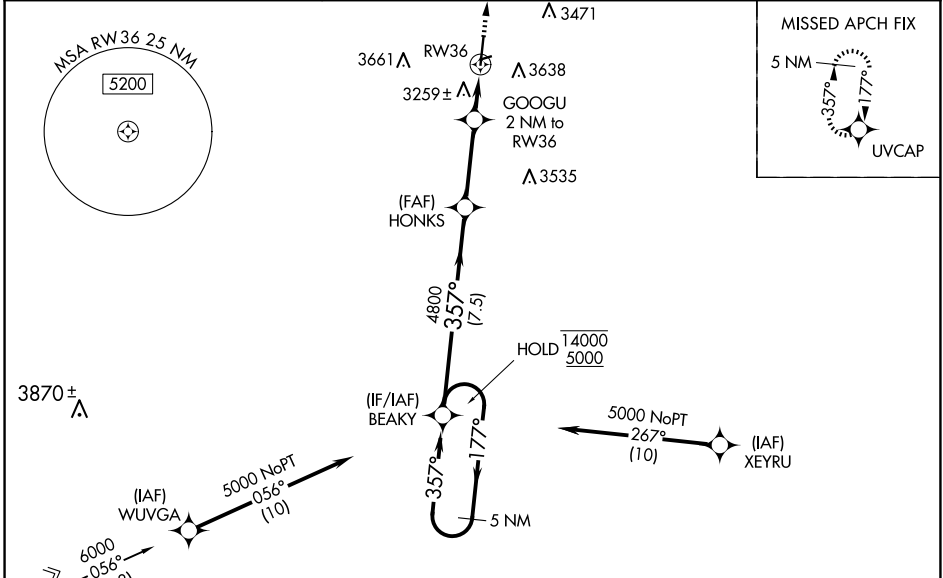
GUYMON MUNI (GUY)

RNP APCH - GPS.

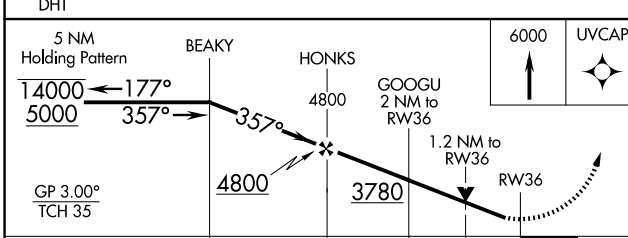
⚠ Circling NA east of Rwy 18-36. Baro-VNAV and VDP NA when using Liberal altimeter setting. Rwy 36 helicopter visibility reduction below 3/4 SM NA. For uncompensated Baro-VNAV systems, LNAV/VNAV NA below -21°C or above 54°C. When local altimeter setting not received, use Liberal altimeter setting: increase LPV DA to 3487 feet; LNAV/VNAV DA to 3696 feet and all visibilities 1/4 SM; increase all MDAs 120 feet and visibility LNAV Cat C 1/4 SM, and Circling Cat C 1/2 SM. Circling NA to Rwy 6 and 24.

MISSED APPROACH:
Climb to 6000 direct UVCAP and hold.

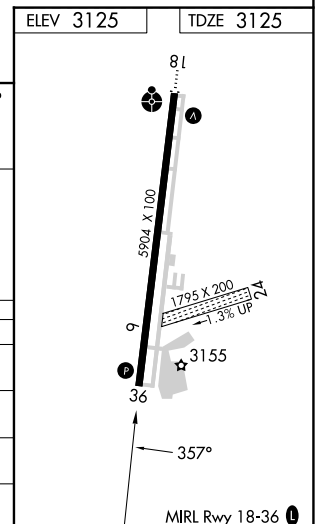
ASOS 119.925	KANSAS CITY CENTER 134.0 257.625	UNICOM 122.7 (CTAF)
------------------------	--	-------------------------------



Procedure NA for arrival on DHT VORTAC airway radials 071 CW 129 and arrivals at DHT VORTAC on T420 northwest bound.



CATEGORY	A	B	C	D
LPV DA	3375-3/4 250 (300-3/4)			NA
LNAV/VNAV DA	3584-13/8 459 (500-13/8)			NA
LNAV MDA	3520-1	395 (400-1)	3520-1 1/8 395 (400-1 1/8)	NA
C CIRCLING	3580-1 455 (500-1)	3600-1 475 (500-1)	3980-2 1/2 855 (900-2 1/2)	NA



SC-1, 23 JAN 2025 to 20 FEB 2025

SC-1, 23 JAN 2025 to 20 FEB 2025