

RNAV (GPS) RWY 31

APCH CRS 315°	Rwy ldg 9999
	TDZE 10
	Arprt Elev 10

[USAF]

CAPE CANAVERAL SFS SKID STRIP (KXMR)

DME/DME RNP-0.3 NA.

SALS

▼ * When ALS inop, increase CAT CDE vis to 1 3/8 miles.
 ** Circling not authorized NE of Rwy 13-31.

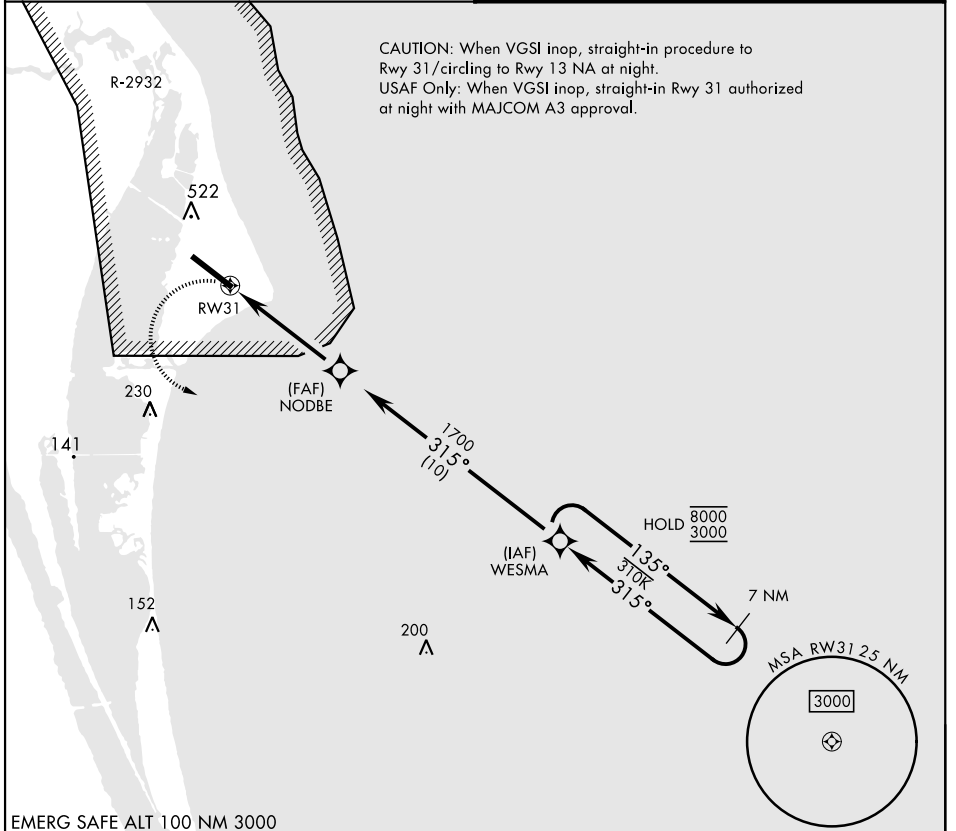


MISSED APPROACH: Turn left, climb to 3000 direct WESMA and hold.

ORLANDO APP CON
134.95 281.425

CAPE TOWER ★
118.625 143.15 239.05

CAUTION: When VGSI inop, straight-in procedure to Rwy 31/circling to Rwy 13 NA at night.
 USAF Only: When VGSI inop, straight-in Rwy 31 authorized at night with MAJCOM A3 approval.



EMERG SAFE ALT 100 NM 3000

	WESMA 7 NM Holding Pattern		ELEV	10	TDZE	10
RWY 31		NODBE				
CATEGORY	A	B	C	D	E	
LNAV MDA *	500-1	491 (500-1)	500-1 1/8		491 (500-1 1/8)	
CIRCLING **	580-1	570 (600-1)	580-1 1/2	620-2	640-2 1/4	HIRL Rwy 13-31
			570 (600-1 1/2)	610 (700-2)	630 (700-2 1/4)	

RNAV (GPS) RWY 31

SE-3, 23 JAN 2025 to 20 FEB 2025

SE-3, 23 JAN 2025 to 20 FEB 2025