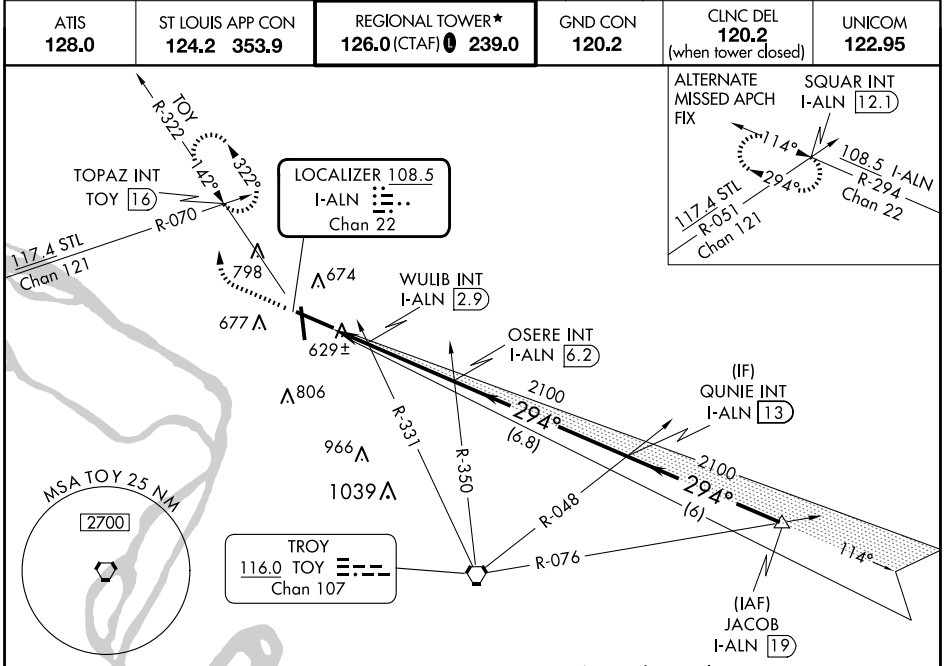


LOC/DME I-ALN 108.5 Chan 22	APP CRS 294°	Rwy Idg TDZE Apt Elev	8099 531 544
---	------------------------	-----------------------------	---

ILS or LOC RWY 29

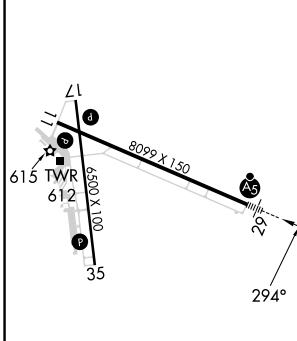
ST LOUIS RGNL (ALN)

<p>For inop ALS, increase WULIB fix minimums S-LOC 29 Cats C/D visibility to 1 SM.</p>	<p>MALS R</p>	<p>MISSED APPROACH: Climb to 1000 then climbing right turn to 2200 on heading 310° and on TOY VORTAC R-322 to TOPAZ INT/TOY 16 DME and hold.</p>			
			<p>ATIS 128.0</p>	<p>ST LOUIS APP CON 124.2 353.9</p>	<p>REGIONAL TOWER* 126.0 (CTAF) 0 239.0</p>



ELEV 544	D	TDZE 531
-----------------	----------	-----------------

Procedure NA for arrivals at JACOB on V12 northeast bound.



<p>1000 2200</p> <p>↑ hdg 310°</p>	TOY R-322	TOPAZ INT	*LOC only.		
	OSERE INT I-ALN 6.2	QUNIE INT I-ALN 13	JACOB I-ALN 19		
	WULIB INT I-ALN 2.9	2100	2100	2100	GS 3.00° TCH 55
	*980	2100	2100		
	1.4 NM	3.3 NM	6.8 NM	6 NM	
CATEGORY	A	B	C	D	
S-ILS 29	731-½ 200 (200-½)				
S-LOC 29	980-½ 449 (500-½)	980-¾ 449 (500-¾)			
CIRCLING	1000-1 456 (500-1)	1160-1¾ 616 (700-1¾)	1200-2 656 (700-2)		
WULIB FIX MINIMUMS (DUAL VOR RECEIVERS OR DME REQUIRED)					
S-LOC 29	880-½ 349 (400-½)	880-¾ 349 (400-¾)			
CIRCLING	1000-1 456 (500-1)	1160-1¾ 616 (700-1¾)	1200-2 656 (700-2)		

REIL Rwy 11

HIRL Rwy 11-29

MIRL Rwy 17-35

FAF to MAP 4.8 NM

Knots	60	90	120	150	180
Min:Sec	4:48	3:12	2:24	1:55	1:36

EC-3, 23 JAN 2025 to 20 FEB 2025

EC-3, 23 JAN 2025 to 20 FEB 2025