

LOC I-DVS 111.9	APP CRS 357°	Rwy Idg TDZE Apt Elev	8501 790 794
---------------------------	------------------------	-----------------------------	---

ILS RWY 35 (SA CAT I & II)

GERALD R FORD INTL (G.R.R)

DME required. DME or RADAR required for procedure entry.

SA CAT I: Requires specific OPSPEC, MSPEC, or LOA approval and use of HUD to DH.

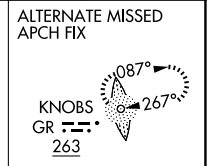
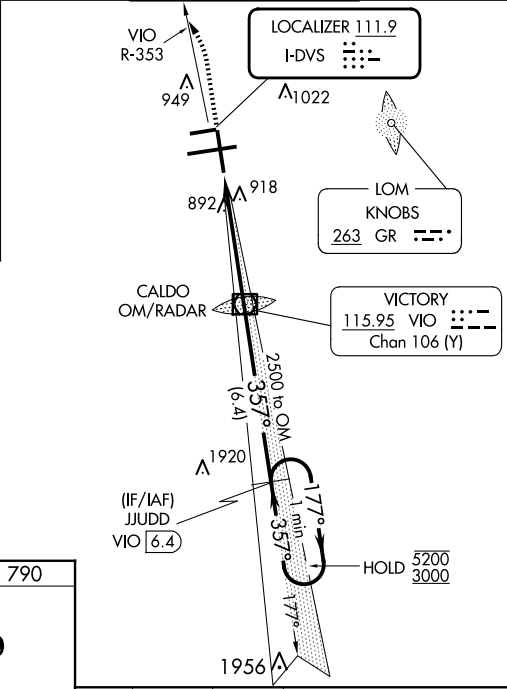
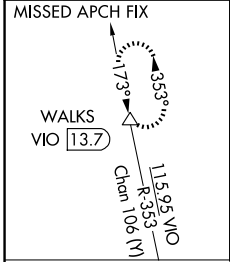
SA CAT II: Reduced lighting: requires specific OPSPEC, MSPEC, or LOA approval and use of autoland or HUD to touchdown.

Procedure NA when tower closed.

MALS R

MISSED APPROACH: Climb to 1300 then climbing left turn to 3000 on VIO VOR/DME R-353 to WALKS 13.7 DME and hold.

ATIS 118.725	GREAT LAKES APP CON * 128.4 257.6	GRAND RAPIDS TOWER * 135.65 (CTAF) 0 339.8	GND CON 121.8	CLNC DEL 119.3	UNICOM 122.95
------------------------	---	--	-------------------------	--------------------------	-------------------------

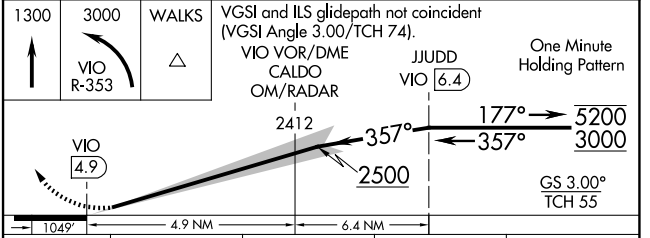
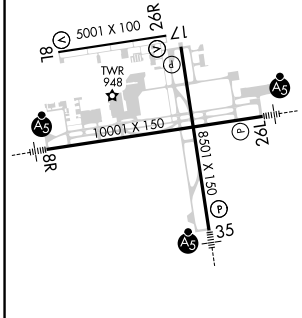


ELEV 794	D	TDZE 790
----------	----------	----------

MIRL Rwy 8L-26R

REIL Rwys 8L, 17 and 26R

HIRL Rwys 8R-26L and 17-35



CATEGORY	A	B	C	D
S-ILS 35	SA CAT I RA 160/14 150 DA 940			
S-ILS 35	SA CAT II RA 122/12 100 DA 890			

SA CATEGORY I & II ILS - SPECIAL AIRCREW & AIRCRAFT CERTIFICATION REQUIRED

EC-1, 23 JAN 2025 to 20 FEB 2025

EC-1, 23 JAN 2025 to 20 FEB 2025