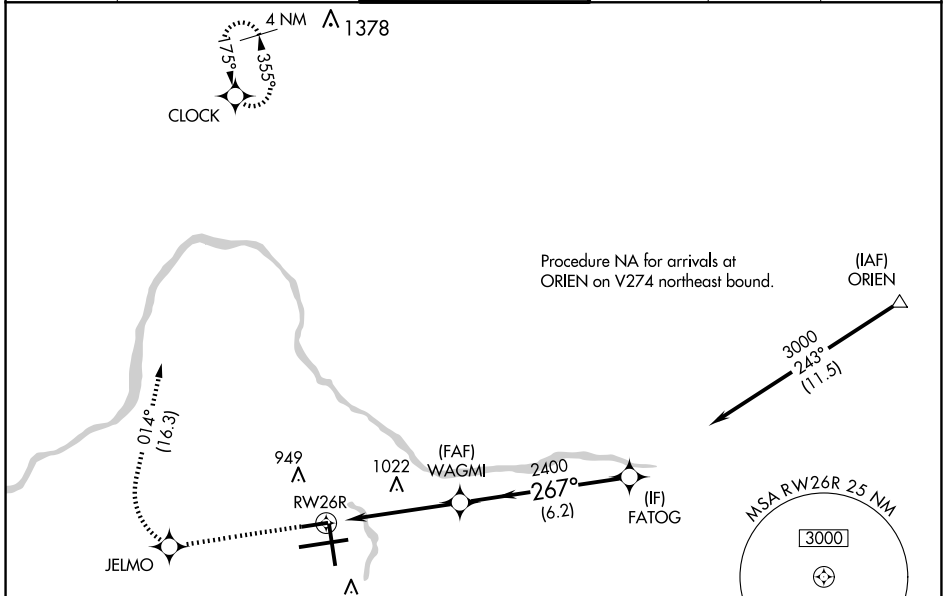


| | | |
|--|------------------------|---|
| WAAS CH 82413 W26A | APP CRS 267° | Rwy Idg 5001 TDZE 787 Apt Elev 794 |
|--|------------------------|---|

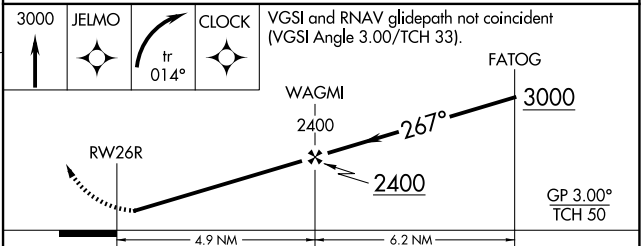
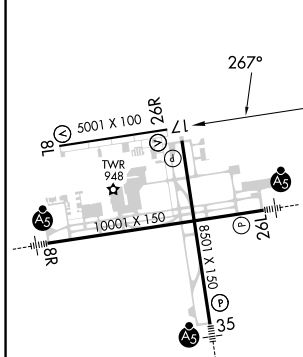
RNAV (GPS) RWY 26R

GERALD R FORD INTL (G.R.R.)

| | | | | | |
|--|--|---|--|--|--|
| RNP APCH. | | MISSED APPROACH: Climb to 3000 direct JELMO and right turn on track 014° to CLOCK and hold. | | | |
| <p>▼ For uncompensated Baro-VNAV systems, LNAV/VNAV NA below -16°C or above 47°C. Rwy 26R helicopter visibility reduction below 1 SM NA.</p> | | ATIS 118.725 | | GREAT LAKES APP CON * 128.4 257.6 | |
| GRAND RAPIDS TOWER * 135.65 (CTAF) 339.8 | | GND CON 121.8 | | CLNC DEL 119.3 | |
| | | UNICOM 122.95 | | | |



| | | |
|----------|----------|----------|
| ELEV 794 | D | TDZE 787 |
|----------|----------|----------|



| | | | | |
|-------------------|----------------------|----------------------|----------------------|----------------------|
| CATEGORY | A | B | C | D |
| LPV DA | 1037-1 250 (300-1) | | | |
| LNAV/VNAV DA | 1216-1½ 429 (500-1½) | | | |
| LNAV MDA | 1280-1 493 (500-1) | 1280-1¾ 493 (500-1¾) | 1280-1½ 493 (500-1½) | 1280-1½ 493 (500-1½) |
| C CIRCLING | 1280-1 486 (500-1) | 1340-1½ 546 (600-1½) | 1360-2 566 (600-2) | 1360-2 566 (600-2) |

MIRL Rwy 8L-26L
REIL Rwy 8L, 17 and 26R
HIRL Rwy 8R-26L and 17-35

EC-1, 23 JAN 2025 to 20 FEB 2025

EC-1, 23 JAN 2025 to 20 FEB 2025