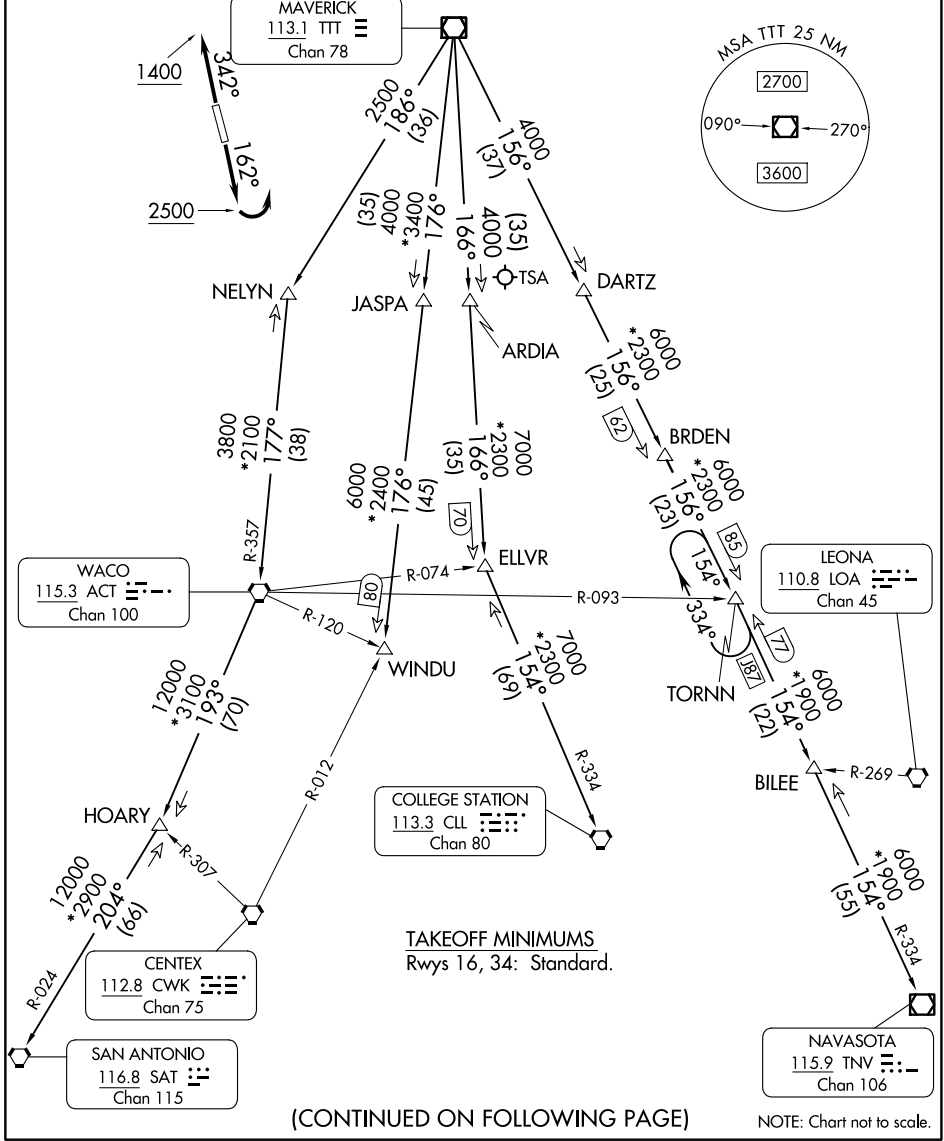


JOE POOL SEVEN DEPARTURE

LONE STAR DEP CON
135.975 379.9
CLNC DEL
121.875
CLNC DEL (when twr closed)
118.85
GND CON
121.875
ARLINGTON TOWER ★
128.625 (CTAF)

RADAR and DME required.

**TOP ALTITUDE:
ASSIGNED BY ATC**



SC-2, 23 JAN 2025 to 20 FEB 2025

SC-2, 23 JAN 2025 to 20 FEB 2025

JOE POOL SEVEN DEPARTURE

(CONTINUED ON FOLLOWING PAGE)

NOTE: Chart not to scale.