

TERPZ EIGHT DEPARTURE (RNAV)

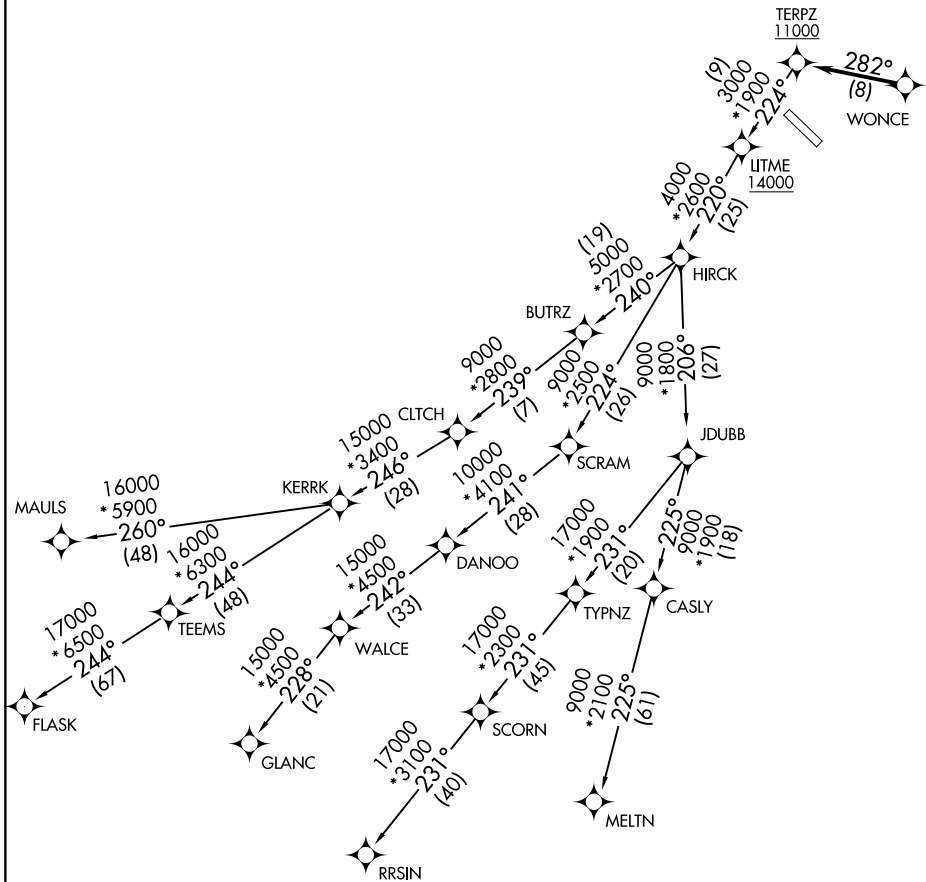
GAITHERSBURG, MARYLAND

POTOMAC DEP CON
 128.7 307.9
 AWOS-3PT
 128.275
 CLNC DEL
 121.6
 UNICOM
 123.075 (CTAF)

RNAV 1 - DME/DME/IRU or GPS.

RADAR required.

**TOP ALTITUDE:
 17000**



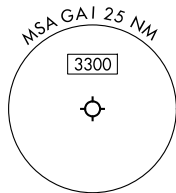
NE-3, 23 JAN 2025 to 20 FEB 2025

NE-3, 23 JAN 2025 to 20 FEB 2025

NOTE: Jet aircraft only.

TAKEOFF MINIMUMS:
 Rwy 14, 32: Standard.

NOTE: Chart not to scale.



TERPZ EIGHT DEPARTURE (RNAV)

GAITHERSBURG, MARYLAND