

(FOXHL1.FOXHL) 24193

AL-5222 (FAA)

MARTIN STATE (MTN)

BALTIMORE, MARYLAND

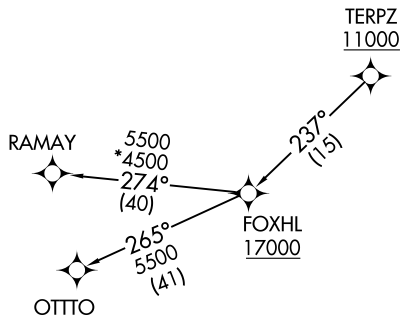
FOXHL ONE DEPARTURE (RNAV)

POTOMAC DEP CON
 119.0 282.275
 ATIS
 124.925
 GND CON
 121.8 253.4
 MARTIN TOWER ★
 121.3 254.425

RNAV 1 - DME/DME/IRU or GPS.

RADAR required.

TOP ALTITUDE:
17000

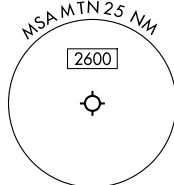


NOTE: Jet aircraft only.

TAKEOFF MINIMUMS:

Rwy 15: Standard.

Rwy 33: Standard with minimum climb of 215'/NM to 1300.



NOTE: Chart not to scale.



DEPARTURE ROUTE DESCRIPTION

Climb on assigned heading for RADAR vectors to cross TERPZ at or above 11000, thence....

....then on track 237° to cross FOXHL at or above 17000, then on assigned transition. Maintain 17000, expect filed altitude 10 minutes after departure.

OTTO TRANSITION (FOXHL1.OTTO)

RAMAY TRANSITION (FOXHL1.RAMAY)

FOXHL ONE DEPARTURE (RNAV)

(FOXHL1.FOXHL) 11JUL24

BALTIMORE, MARYLAND
MARTIN STATE (MTN)

NE-3, 23 JAN 2025 to 20 FEB 2025

NE-3, 23 JAN 2025 to 20 FEB 2025