

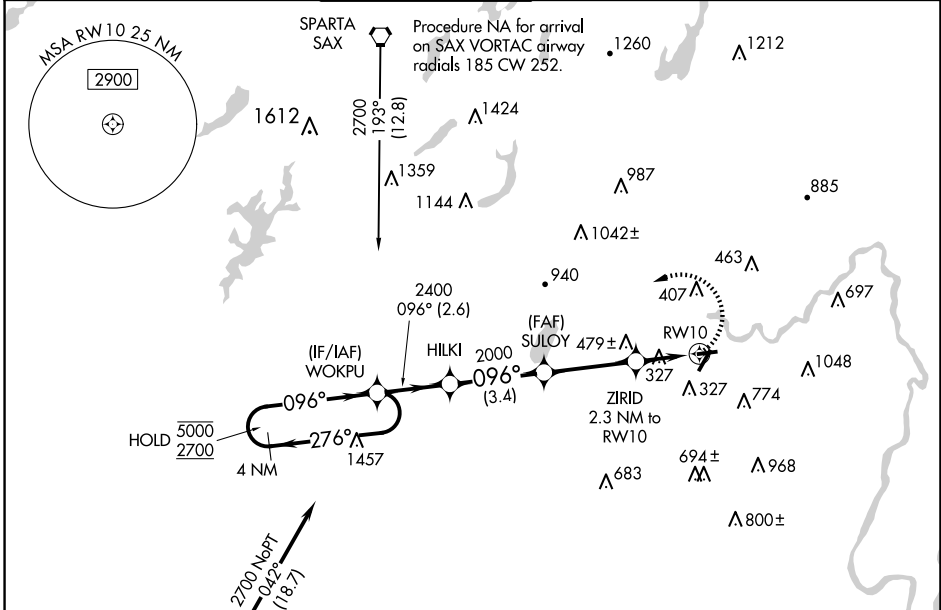
WAAS CH <b>81922</b> <b>W10A</b>	APP CRS <b>096°</b>	Rwy Idg TDZE Apt Elev	<b>2822</b> <b>172</b> <b>172</b>
--	------------------------	-----------------------------	---

# RNAV (GPS) RWY 10

ESSEX COUNTY (CDW)

RNP APCH.		MISSED APPROACH: Climbing left turn to 2700 direct WOKPU and hold.			
<b>▽</b>	Procedure NA at night.				
<b>▲</b>	Rwy 10 helicopter visibility reduction below 1 SM NA.				

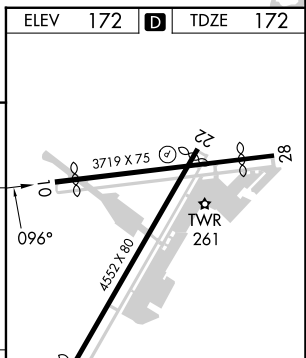
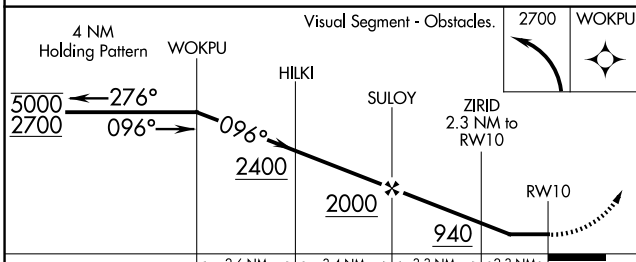
ATIS <b>135.5</b>	NEWARK APP CON <b>127.6 379.9</b>	CALDWELL TOWER ★ <b>119.8 (CTAF) 0</b>	GND CON <b>121.9</b>	CLNC DEL <b>121.1</b>	UNICOM <b>122.95</b>
----------------------	--------------------------------------	---	-------------------------	--------------------------	-------------------------



NE-2, 23 JAN 2025 to 20 FEB 2025

NE-2, 23 JAN 2025 to 20 FEB 2025

ELEV 172	<b>D</b>	TDZE 172
----------	----------	----------



CATEGORY	A	B	C	D
LP MDA	600-1	428 (500-1)	600-1¼	428 (500-1¼)
LNAV MDA	740-1	568 (600-1)	740-1½	568 (600-1½)
<b>C</b> CIRCLING	960-1 788 (800-1)	1040-1¼ 868 (900-1¼)	1100-2¾ 928 (1000-2¾)	1400-3 1228 (1300-3)

- REIL Rwy 22 **0**
- MIRL Rwy 10-28 **0**
- HIRL Rwy 4-22 **0**