

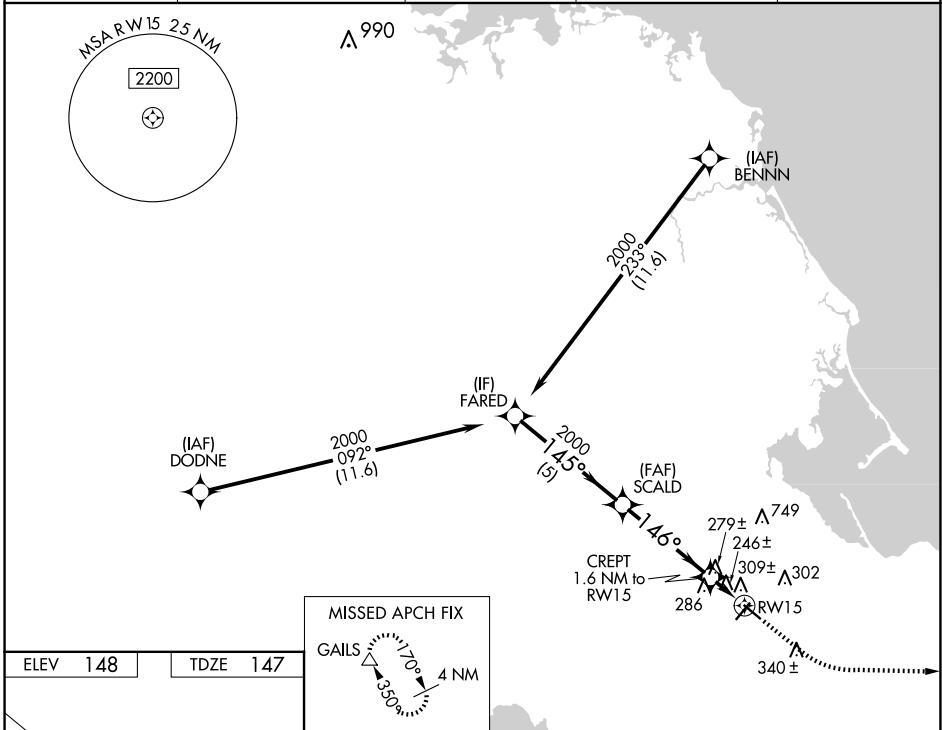
WAAS CH 93639 W15A	APP CRS 146°	Rwy Idg 4350 TDZE 147 Apt Elev 148
--	------------------------	---

RNAV (GPS) RWY 15

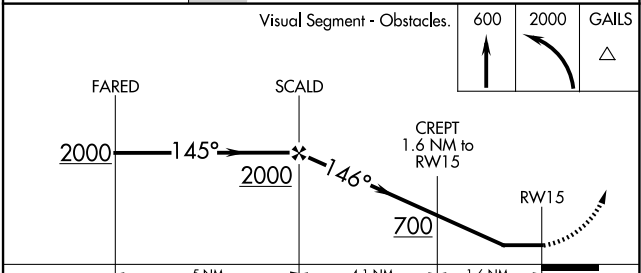
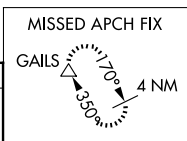
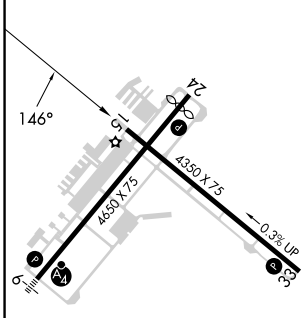
PLYMOUTH MUNI (PYM)

RNP APCH - GPS.	MISSED APPROACH: Climb to 600 then climbing left turn to 2000 direct GAILS and hold.
<p>▼ Rwy 15 helicopter visibility reduction below 1 SM NA.</p> <p>▲ Straight-in Rwy 15 NA at night, Circling Rwy 15 NA at night.</p>	

ASOS 135.625	BOSTON APP CON 118.2 284.6	CLNC DEL 127.75	UNICOM 122.725 (CTAF)	122.9
------------------------	--------------------------------------	---------------------------	---------------------------------	--------------



ELEV 148	TDZE 147
-----------------	-----------------



	5 NM		4.1 NM		1.6 NM		
CATEGORY	A		B		C		D
LP MDA	500-1		353 (400-1)				NA
LNAV MDA	560-1		413 (500-1)		560-1 ¹ / ₈ 413 (500-1 ¹ / ₈)		NA
CIRCLING	620-1 472 (500-1)		640-1 492 (500-1)		760-1 ³ / ₄ 612 (700-1 ³ / ₄)		NA

REIL Rwy 24
MIRL Rwy 6-24 and 15-33

PLYMOUTH, MASSACHUSETTS
Orig-C 31OCT24

41°55'N-70°44'W

RNAV (GPS) RWY 15

NE-1, 23 JAN 2025 to 20 FEB 2025

NE-1, 23 JAN 2025 to 20 FEB 2025