

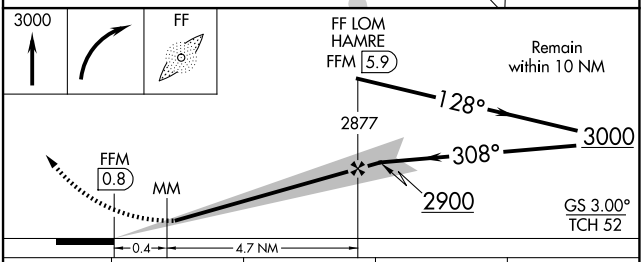
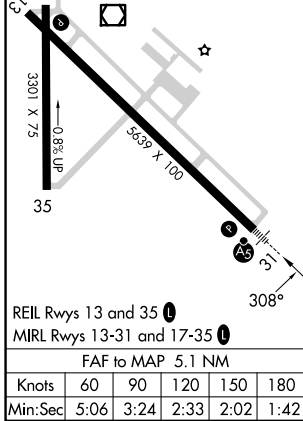
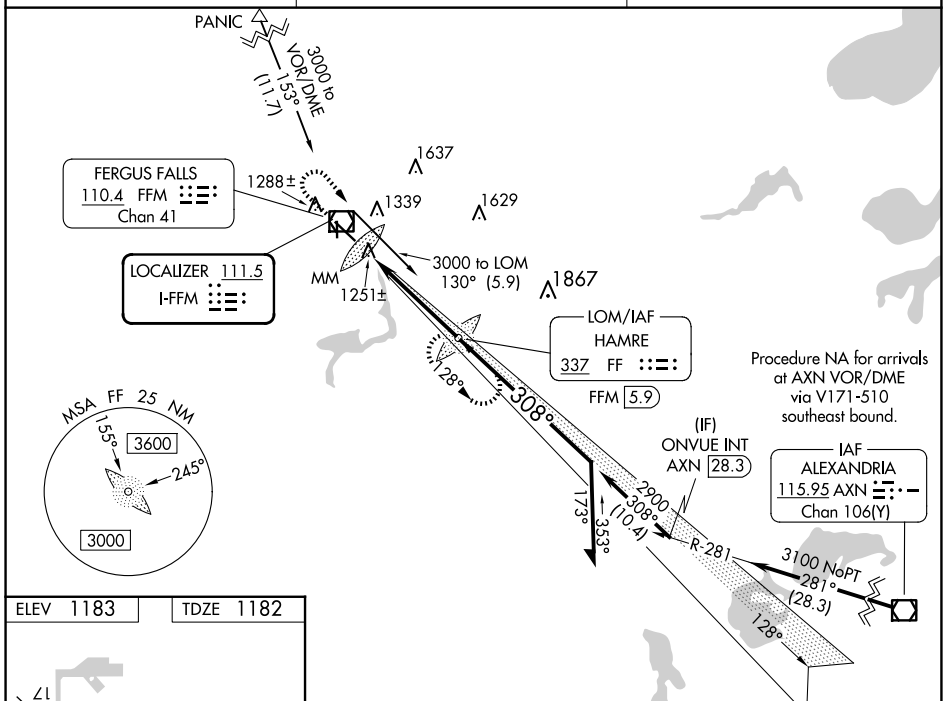
LOC I-FFM 111.5	APP CRS 308°	Rwy Idg TDZE Apt Elev	5639 1182 1183
---------------------------	------------------------	-----------------------------	---

ILS or LOC RWY 31

FERGUS FALLS MUNI/EINAR MICKELSON FLD (FFM)

ADF or DME required.	MALS R 	MISSED APPROACH: Climb to 3000 then right turn direct HAMRE LOM/FFM 5.9 DME and hold.
NA When local altimeter setting not received, use Elbow Lake altimeter setting and increase DA to 1428 and all MDAs 60 feet; increase S-LOC Cat C/D visibility 1/8 SM and Circling Cat C/D visibility 1/4 SM. For inop MALS R, increase S-LOC 31 Cat D visibility 1/4 mile. GS unusable for coupled approaches below 1400.		

AWOS-3PT 119.05	MINNEAPOLIS CENTER 126.1 269.2	UNICOM 122.8 (CTAF) 0
---------------------------	--	---------------------------------



CATEGORY	A	B	C	D
S-ILS 31	1382-1/2 200 (200-1/2)			
S-LOC 31	1520-1/2 338 (400-1/2)		1520-3/4 338 (400-3/4)	
CIRCLING	1640-1 457 (500-1)	1740-1 557 (600-1)	1820-1 3/4 637 (700-1 3/4)	1940-2 1/2 757 (800-2 1/2)

NC-1, 23 JAN 2025 to 20 FEB 2025

NC-1, 23 JAN 2025 to 20 FEB 2025