

WAAS CH <b>65920</b> <b>W13A</b>	APP CRS <b>128°</b>	Rwy Idg <b>5639</b> TDZE <b>1182</b> Apt Elev <b>1183</b>
--	------------------------	---

# RNAV (GPS) RWY 13

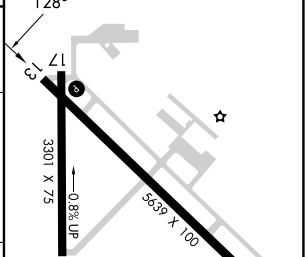
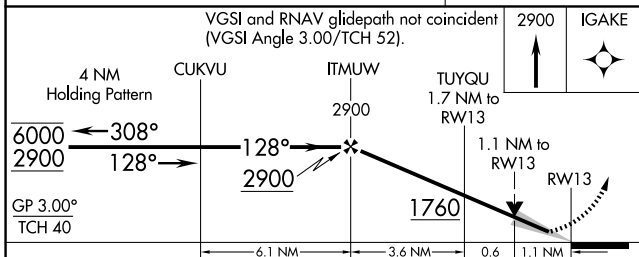
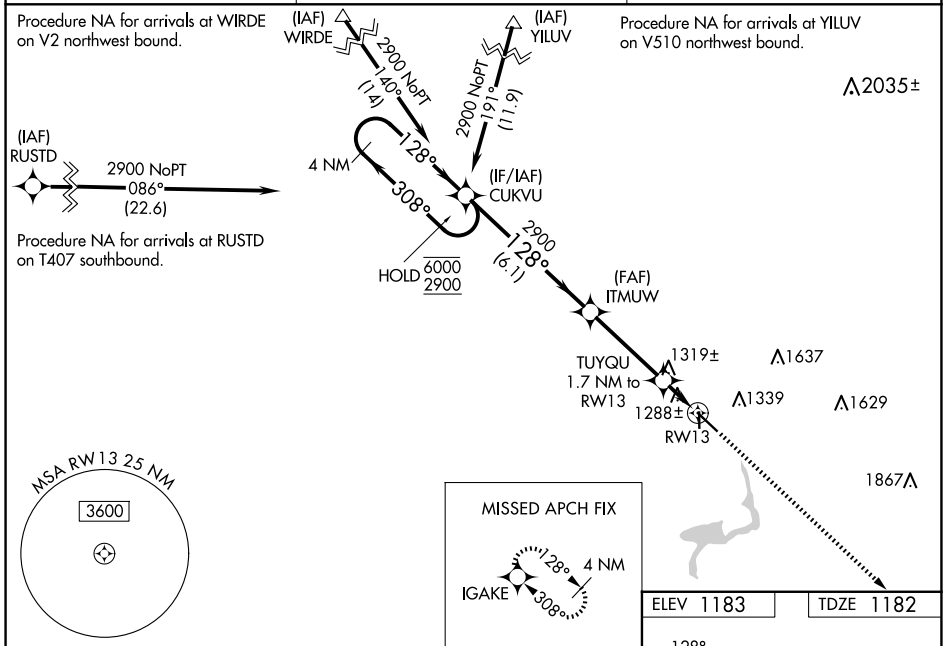
FERGUS FALLS MUNI/EINAR MICKELSON FLD (F<sup>F</sup>M)

RNP APCH - GPS.

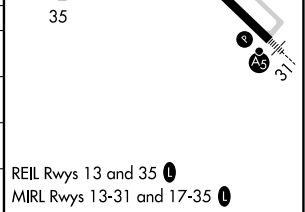
**⚠** For uncompensated Baro-VNAV systems, LNAV/VNAV NA below -17°C or above 54°C.  
**⚠** When local altimeter setting not received, use Elbow Lake altimeter setting and increase LPV DA to 1428 feet, increase LNAV/VNAV DA to 1516 feet and all visibilities ½ SM; increase all MDAs 60 feet and LNAV Cat C/D and Circling Cat C/D visibility ¼ SM. Baro-VNAV and VDP NA when using Elbow Lake altimeter setting.

MISSED APPROACH:  
Climb to 2900 direct IGAKE and hold.

AWOS-3PT <b>119.05</b>	MINNEAPOLIS CENTER <b>126.1 269.2</b>	UNICOM <b>122.8 (CTAF) 0</b>
---------------------------	--	---------------------------------



CATEGORY	A	B	C	D
LPV DA		1382-¾	200 (200-¾)	
LNAV/VNAV DA		1470-7/8	288 (300-7/8)	
LNAV MDA	1580-1	398 (400-1)	1580-1 1/8	398 (400-1 1/8)
CIRCLING	1640-1 457 (500-1)	1740-1 557 (600-1)	1820-1 3/4 637 (700-1 3/4)	1940-2 1/2 757 (800-2 1/2)



NC-1, 23 JAN 2025 to 20 FEB 2025

NC-1, 23 JAN 2025 to 20 FEB 2025