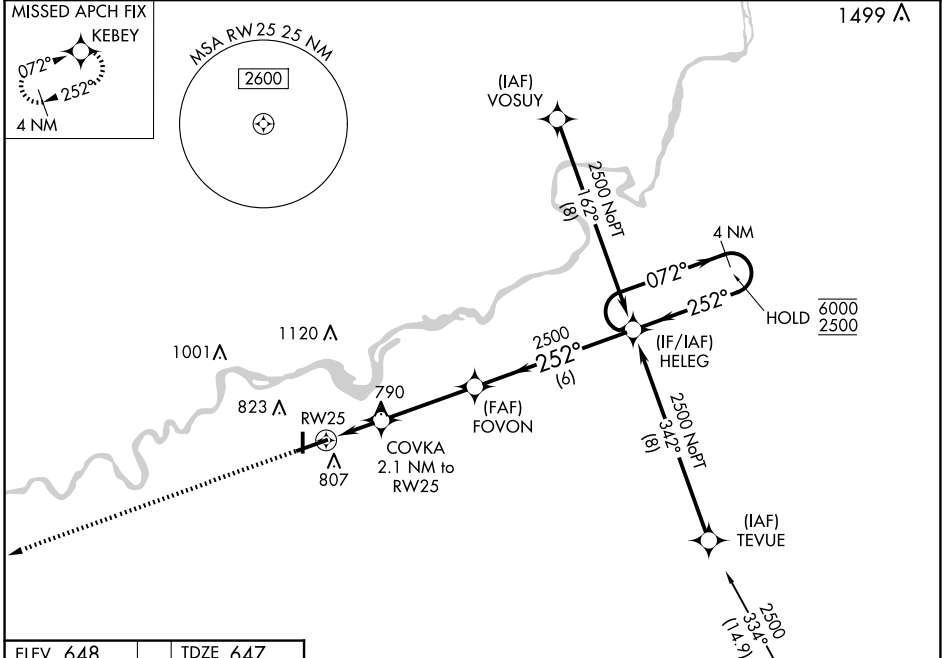


WAAS CH 57910 W25A	APP CRS 252°	Rwy Idg TDZE Apt Elev	6499 647 648
--	------------------------	-----------------------------	---

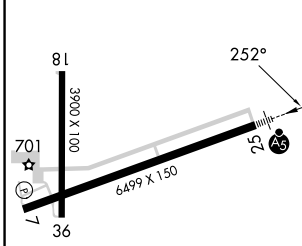
RNAV (GPS) RWY 25
WHITESIDE COUNTY/JOS H BITTORF FLD (SQI)

RNP APCH - GPS.		MALSR	MISSED APPROACH: Climb to 2700 direct KEBEY and hold.
 For uncompensated Baro-VNAV systems, LNAV/VNAV NA below -16°C or above 54°C.			

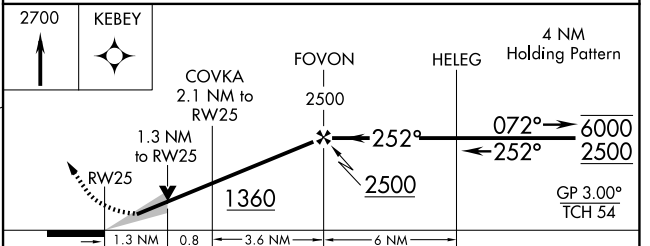
AWOS-3PT 119.175	ROCKFORD APP CON 126.0 327.0	CINC DEL 128.0	UNICOM 123.0 (CTAF)
----------------------------	--	--------------------------	-------------------------------



ELEV 648	TDZE 647
----------	----------



Procedure NA for arrivals at TRIDE on V8-38 eastbound.



CATEGORY	A	B	C	D
LPV DA		847-1/2	200 (200-1/2)	
LNAV/VNAV DA		1047-5/8	400 (400-5/8)	
LNAV MDA	1100-1/2	453 (500-1/2)	1100-7/8	453 (500-7/8)
CIRCLING	1140-1	492 (500-1)	1160-1/2 512 (600-1/2)	1480-2 3/4 832 (900-2 3/4)

HIRL Rwy 7-25
MIRL Rwy 18-36
REIL Rwy 7, 18 and 36

EC-3, 23 JAN 2025 to 20 FEB 2025

EC-3, 23 JAN 2025 to 20 FEB 2025