

APP CRS	Rwy Idg	<b>5000</b>
<b>229°</b>	TDZE	<b>919</b>
	Apt Elev	<b>928</b>

# RNAV (GPS) RWY 23

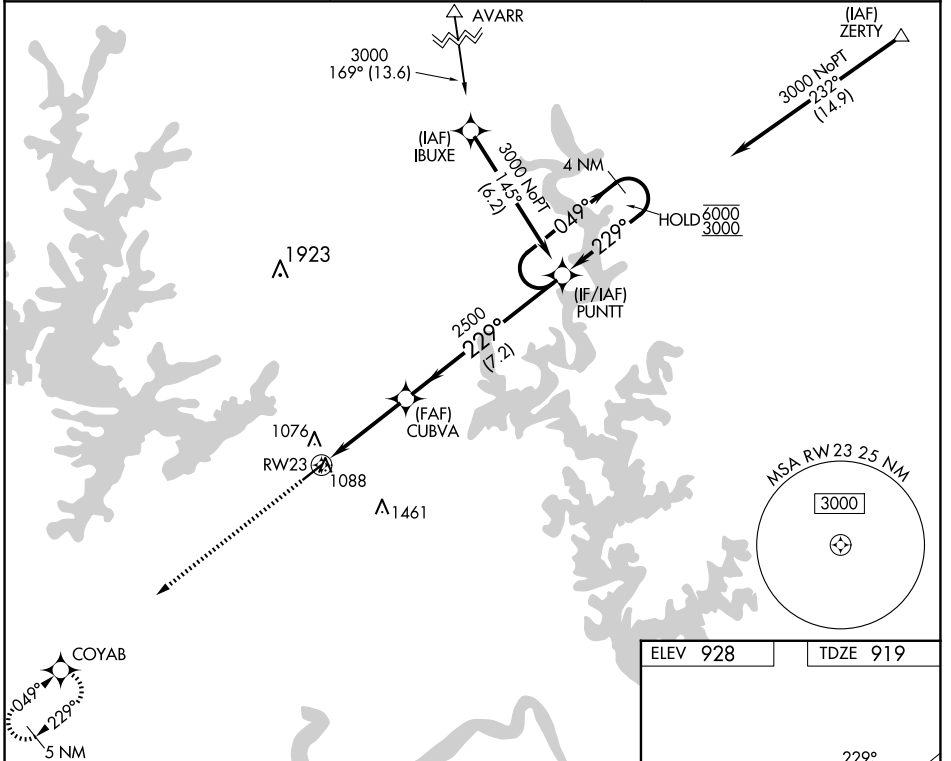
BAXTER COUNTY (BPK)

RNP APCH - GPS.

▼ Procedure NA at night. Rwy 23 helicopter visibility reduction below 1 SM NA.  
 ▲ Circling NA for Cat C southeast of Rwy 5-23.

MISSED APPROACH: Climb to 3100 direct COYAB and hold.

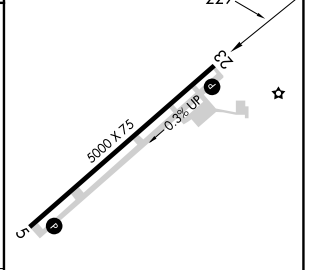
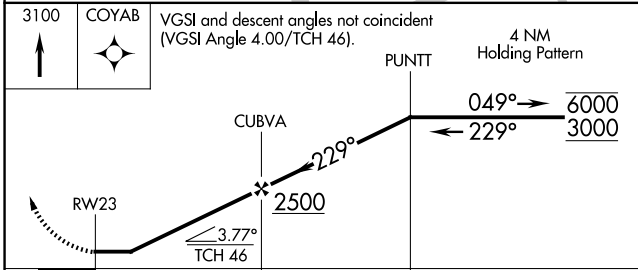
ASOS <b>133.975</b>	MEMPHIS CENTER <b>126.85 281.55</b>	UNICOM <b>123.0 (CTAF) 0</b>
------------------------	--	---------------------------------



SC-1, 23 JAN 2025 to 20 FEB 2025

SC-1, 23 JAN 2025 to 20 FEB 2025

ELEV 928	TDZE 919
----------	----------



CATEGORY	A	B	C	D
LNVA MDA	1360-1	441 (500-1)	1360-1 3/8 441 (500-1 3/8)	NA
CIRCLING	1400-1	472 (500-1)	1460-1 1/2 532 (600-1 1/2)	NA

REIL Rwy 5 and 23 0  
 MRL Rwy 5-23 0