

LOC/DME I-LZW <b>110.5</b> Chan <b>42</b>	APP CRS <b>110°</b>	Rwy Idg <b>4099</b> TDZE <b>482</b> Apt Elev <b>482</b>
---	------------------------	---

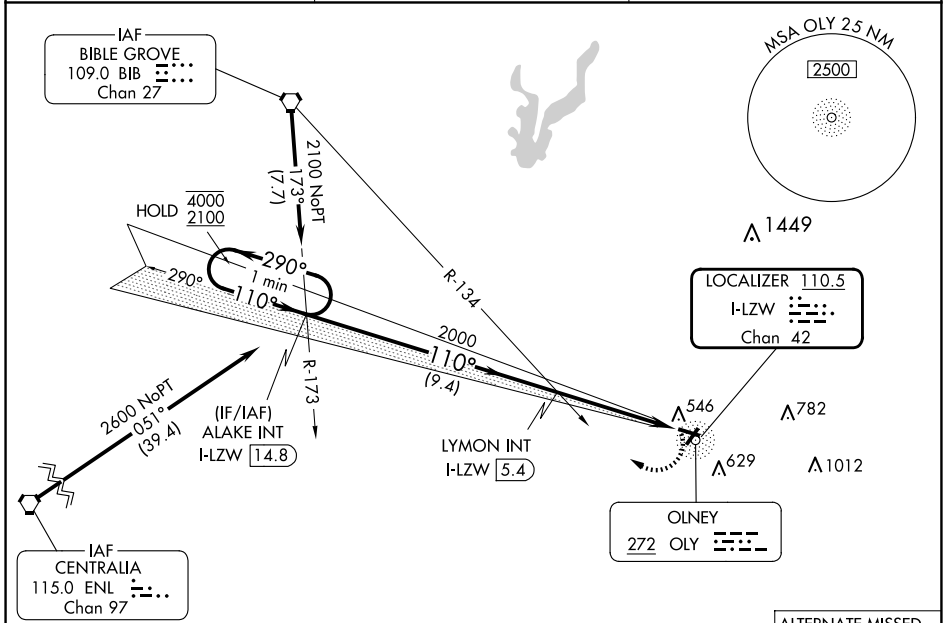
# LOC RWY 11

OLNEY-NOBLE (OLY)

**▽**  
**▲**

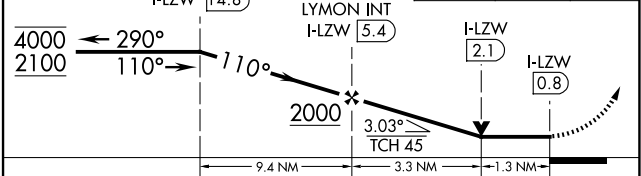
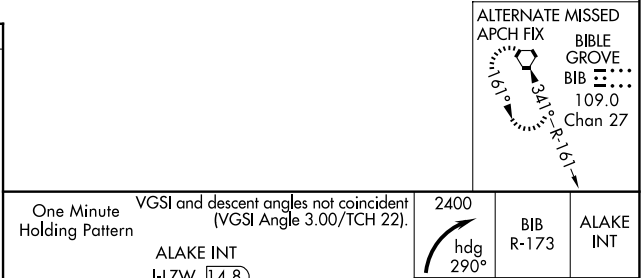
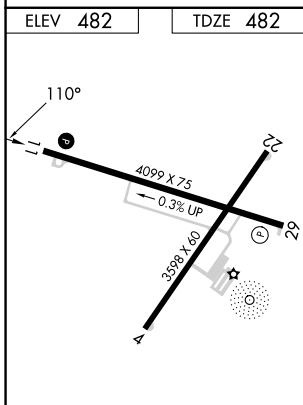
MISSED APPROACH: Climbing right turn to 2400 on heading 290° and BIB VORTAC R-173 to ALAKE INT/I-LZW LOC/DME 14.8 DME and hold.

AWOS-3 <b>119.275</b>	KANSAS CITY CENTER <b>124.3 269.15</b>	UNICOM <b>123.0 (CTAF)</b>
--------------------------	---	-------------------------------



EC-3, 23 JAN 2025 to 20 FEB 2025

EC-3, 23 JAN 2025 to 20 FEB 2025



FAF to MAP 4.6 NM					
Knots	60	90	120	150	180
Min:Sec	4:36	3:04	2:18	1:50	1:32

CATEGORY	A	B	C	D
S-11	920-1	438 (500-1)	920-1¼	438 (500-1¼)
<b>C</b> CIRCLING	920-1	940-1	960-1½	1180-2¼
	438 (500-1)	458 (500-1)	478 (500-1½)	698 (700-2¼)